

# GRÂNDOLA

## Logistic Park – Euro Atlantic



130 hectares



Train Station

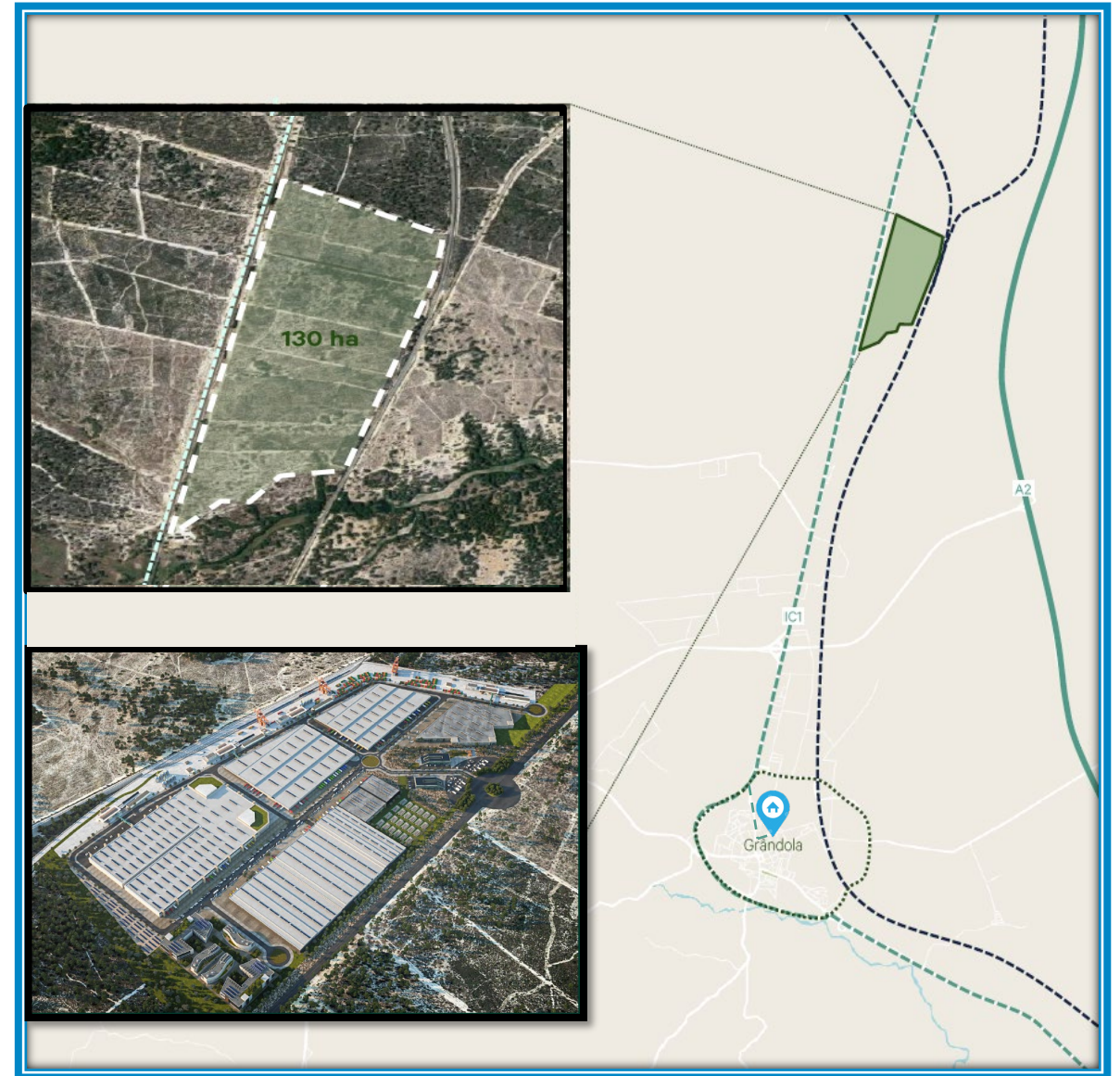


GCA of 630.000 sqm



10 min drive from Sun Hosue

- Grândola Logistic Park is settled to be an **innovative and modern Logistic Center**
- Project cater for a **wide range of occupiers** and has little competition due to unqualified offer in Sines and Setúbal.
- **Perfect location** for Port and Marine Logistics as well as National and Iberian Operators
- It **benefits from outstanding accessibilities** from Sines to Spain, Lisbon to Algarve, by rail or motorway
- The **favorable climate allows great use of renewable energy** to supply the logistics park and adopt unique Environmental Standards for a Logistic Center



- Rail Roads (to Lisbon and Spain)
- A2 Motorway
- - - IC1 National Road

Asset Location



# GRÂNDOLA Logistic Park



Expected Start 3Q 2023



Expected Completion 2026



Expected Investment – 500M€



Expected new employment – 1.000 People



# GRÂNDOLA Logistic Park - Euro Atlantic

