

SoSa

---

URBAN

WORKSPACES • LISBOA

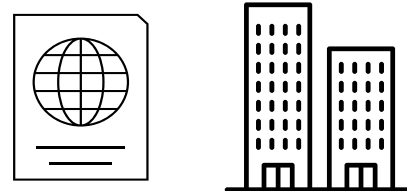
ARISH CAPITAL PARTNERS

THINK SoHo,  
THINK BoHo,  
THINK SoSa  
IN THE HEART OF  
LISBON



Introducing **South Saldanha**  
Urban Place, a modern  
working community for a new  
generation of entrepreneurs.

DUAL INVESTMENT



PRIME REAL ESTATE &  
SECOND CITIZENSHIP / RESIDENCY

*What Else?*

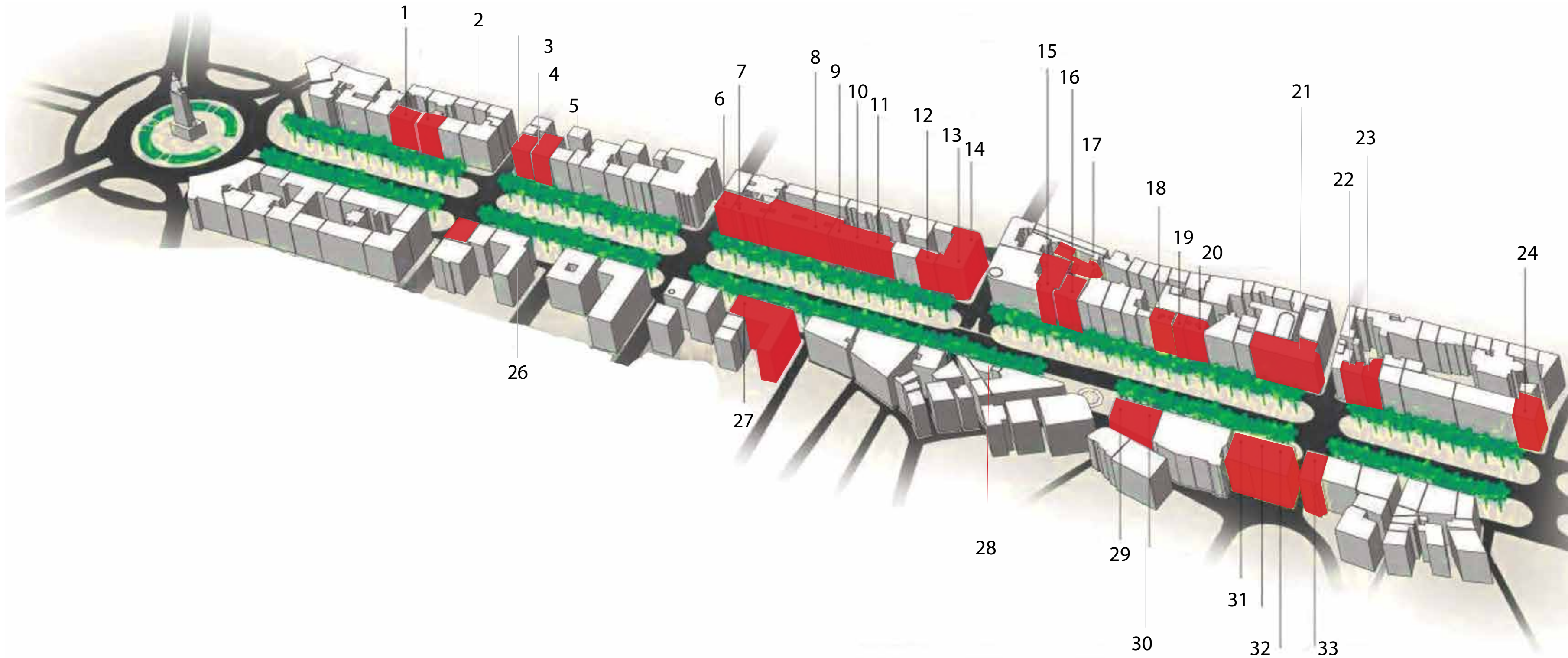


A SENSE OF  
**ACHIEVEMENT**

FOR THOSE  
WHO ARE  
LOOKING FOR  
SOMETHING  
MORE







# THE GOLDEN POSTCODE

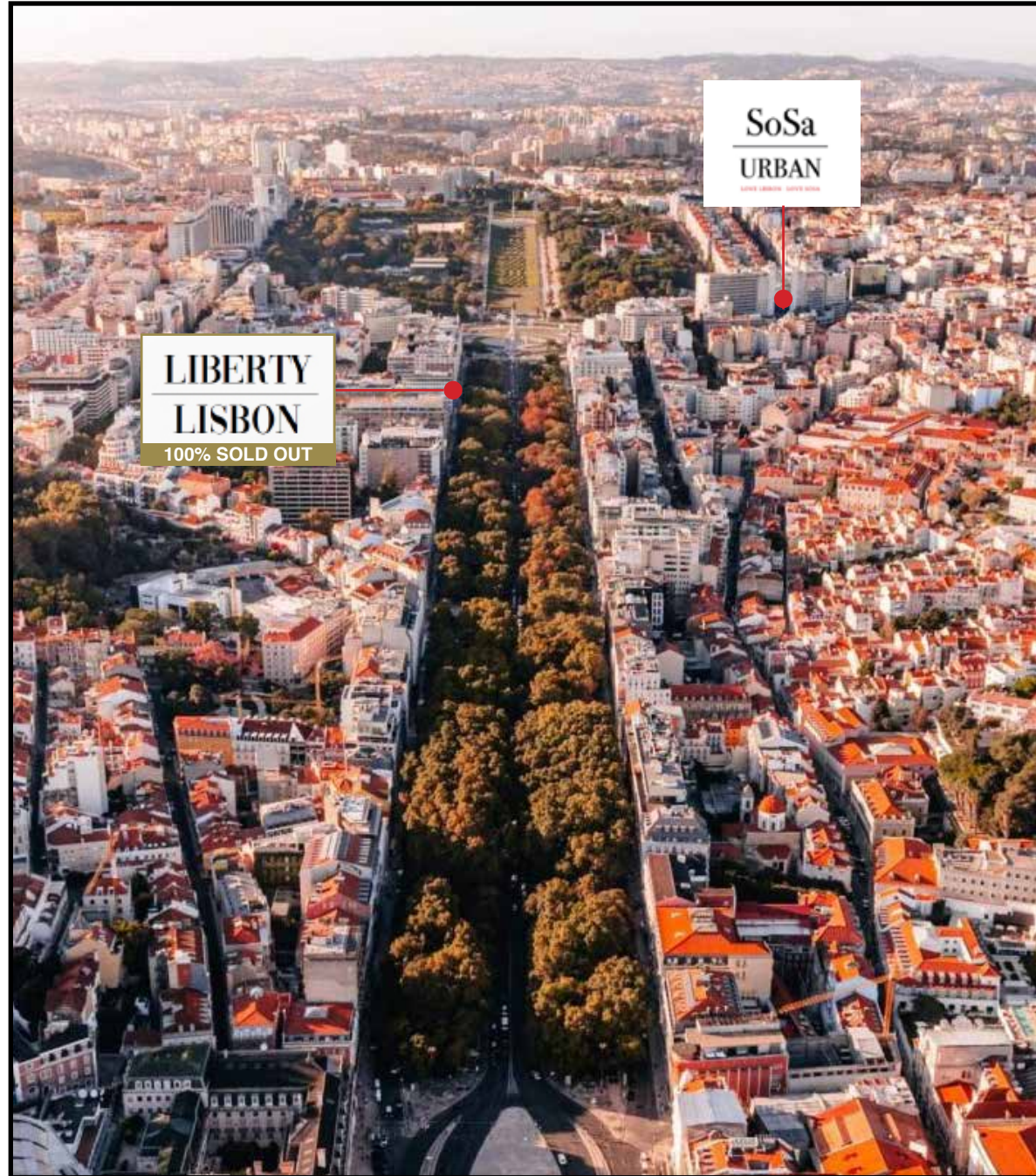
- |                        |                          |
|------------------------|--------------------------|
| 1. ROSA CLARA          | 18. COCCINELLE           |
| 2. CARTIER             | 19. GOLDEN GOOSE         |
| 3. BVLGARI             | 20. CAROLINA HERRERA     |
| 4. VERSACE             | 21. MICHAEL KORS         |
| 5. EMPORIO ARMANI      | 22. MIU MIU              |
| 6. PRADA               | 23. ZADIG & VOLTAIRE     |
| 7. BURBERRY            | 24. MAX MARA             |
| 8. FURLA               | 25. LIBERTY 227          |
| 9. TOD'S               | 26. ROLEX                |
| 10. GUESS              | 27. LOEWE                |
| 11. OMEGA              | 28. BOUTIQUE STORE ROLEX |
| 12. LONGCHAMP          | 29. HACKETT              |
| 13. LOUIS VUITTON      | 30. ERMENGILDO ZEGNO     |
| 14. ESCADA             | 31. HUGO BOSS            |
| 15. YVES SAINT LAURENT | 32. MONT BLANC           |
| 16. GUCCI              | 33. PRONOVIAS            |
| 17. FASHION CLINIC     | 34. SANDRO               |



# LISBON CENTRAL BUSINESS DISTRICT

Welcome to Lisbon CBD 1, a landmark neighbourhood and home to Lisbon's most prestigious domestic and multi-national corporations. From long established companies to leading tech start-ups, exclusive financial service providers, design freelancers and smart entrepreneurs, Lisbon's South Saldanha prime business centre attracts them all.

The area is viewed as a revitalizing hub within the city with creative energy, vibrant and bustling location offering not just a place to work, but also the arts, culture, leisure and opportunity.



## LISBON OFFICE MACRO VIEW MNC AAA TENANTS 62

- |                           |                          |
|---------------------------|--------------------------|
| 1. Samsung                | 32. Cuatrecasas          |
| 2. Janssen                | 33. CTT -Postal Services |
| 3. Pfizer                 | 34. RTP                  |
| 4. Teixeira Duarte        | 35. Ageas                |
| 5. Google                 | 36. Microsoft            |
| 6. Cisco                  | 37. NOWO                 |
| 7. Renault                | 38. Ericsson             |
| 8. Accenture              | 39. Nova Base            |
| 9. Lóreal                 | 40. Vodafone             |
| 10. ROOF                  | 41. TNT Express          |
| 11. scendi                | 42. IBM                  |
| 12. SIC                   | 43. BNP Paribas          |
| 13. Coca -Cola            | 44. Regus                |
| 14. Schneider Electric    | 45. NOS                  |
| 15. Abreu - Travel agency | 46. Savills              |
| 16. Hoffmann-La Roche     | 47. BPI Bank             |
| 17. Coriant               | 48. KPMG                 |
| 18. Nokia                 | 49. PLMJ                 |
| 19. Talkdesk              | 50. Prime IT             |
| 20. Accenture             | 51. BI4ALL – IT Company  |
| 21. CMS lawyers           | 52. Alive Travel Agency  |
| 22. JLL                   | 53. Manpower Group       |
| 23. Farfetch              | 54. Global Media Group   |
| 24. LACS                  | 55. GALP                 |
| 25. EDP Energy            | 56. Barclays             |
| 26. VDA Laywers           | 57. Fujitsu              |
| 27. Google                | 58. Santander Bank       |
| 28. Bankinter             | 59. Deloitte             |
| 29. Tranquilidade         | 60. CBRE                 |
| 30. Allianz               | 61. EPAL Water Company   |
| 31. PWC                   | 62. Kelly R              |





# SoSa URBAN

## A DESTINATION UNTO ITSELF

### SELF-EVIDENT

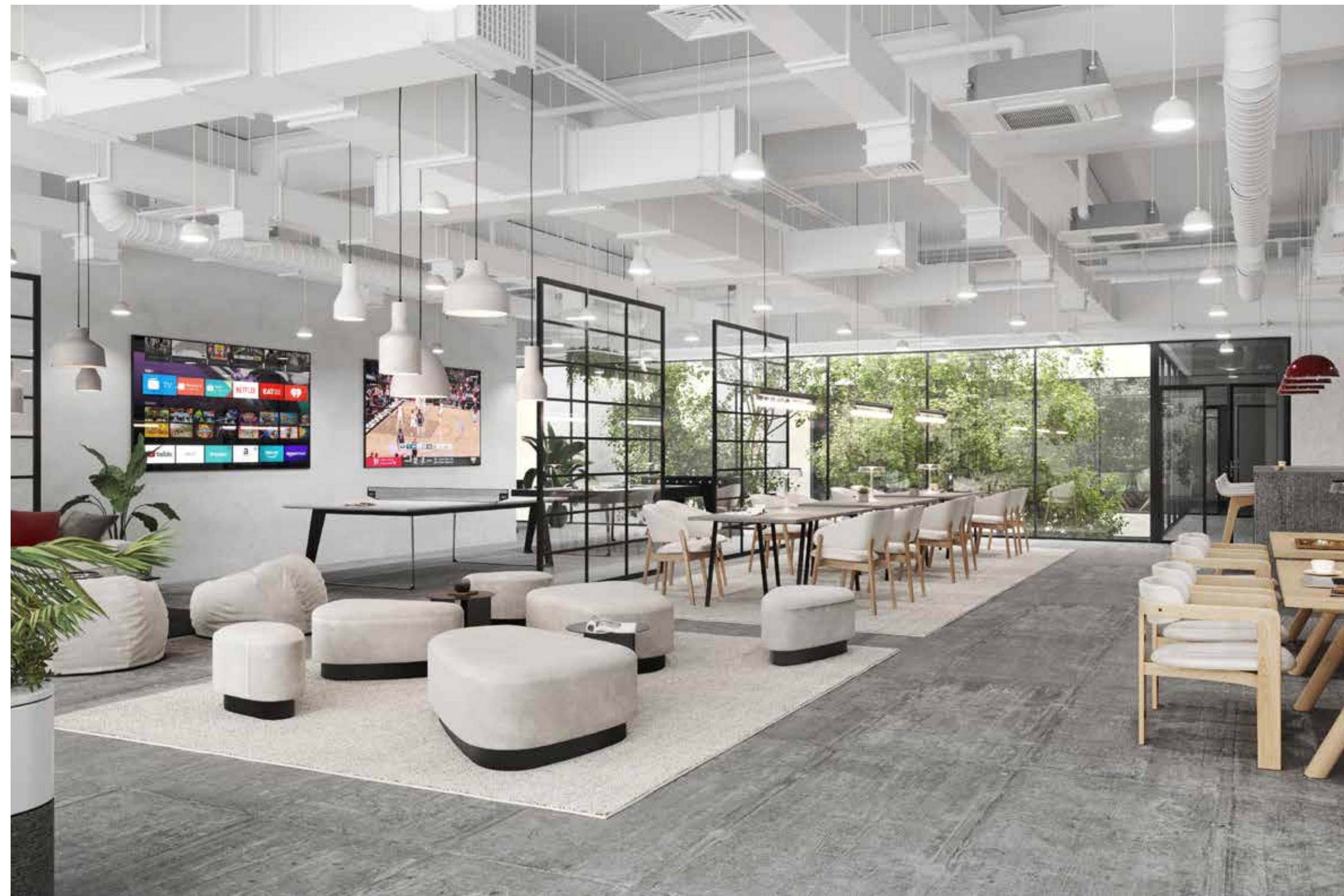
The pinnacle of modern working, beautifully-designed for a chic working community, with a deliberate social space yet highly productive working vibe.

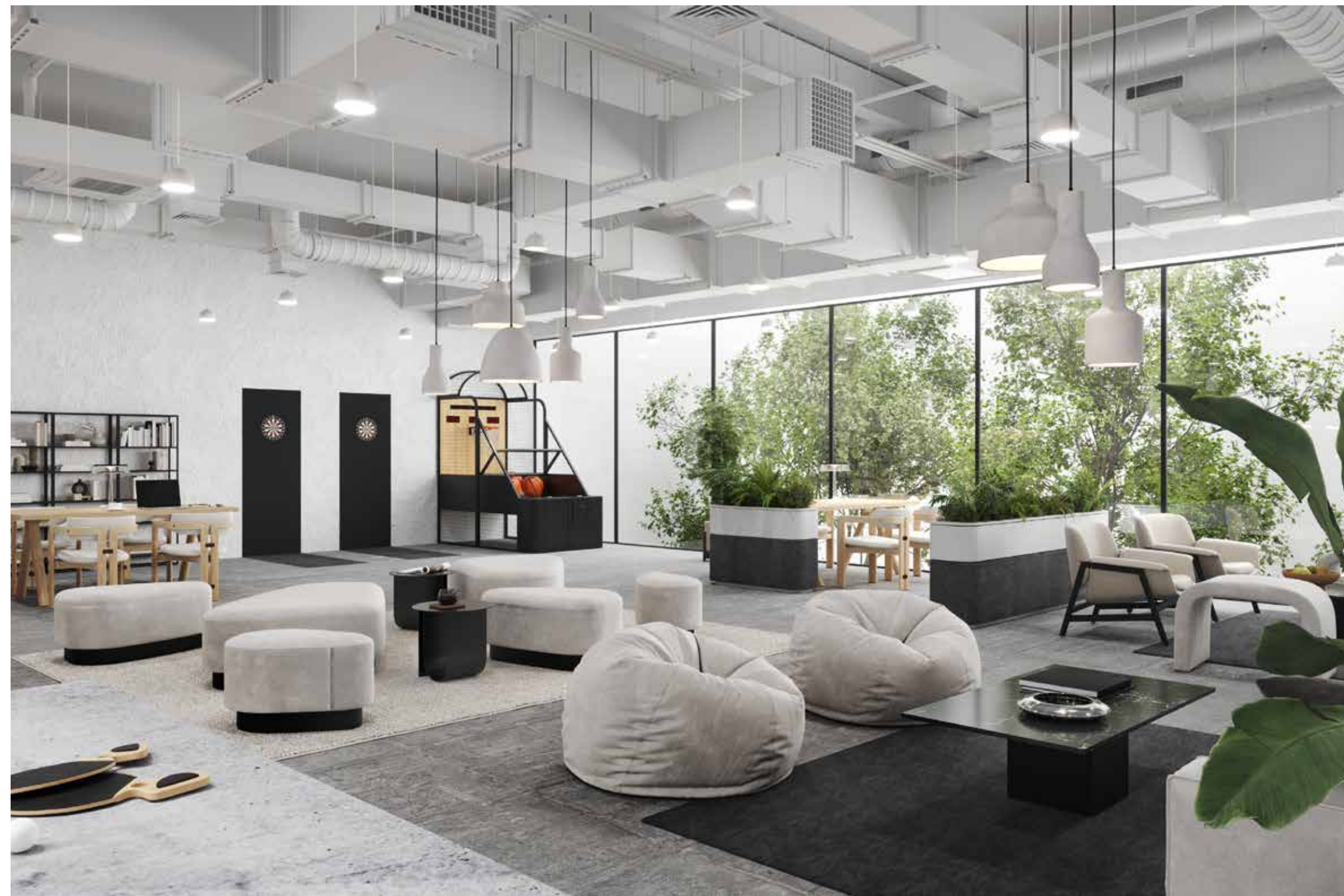
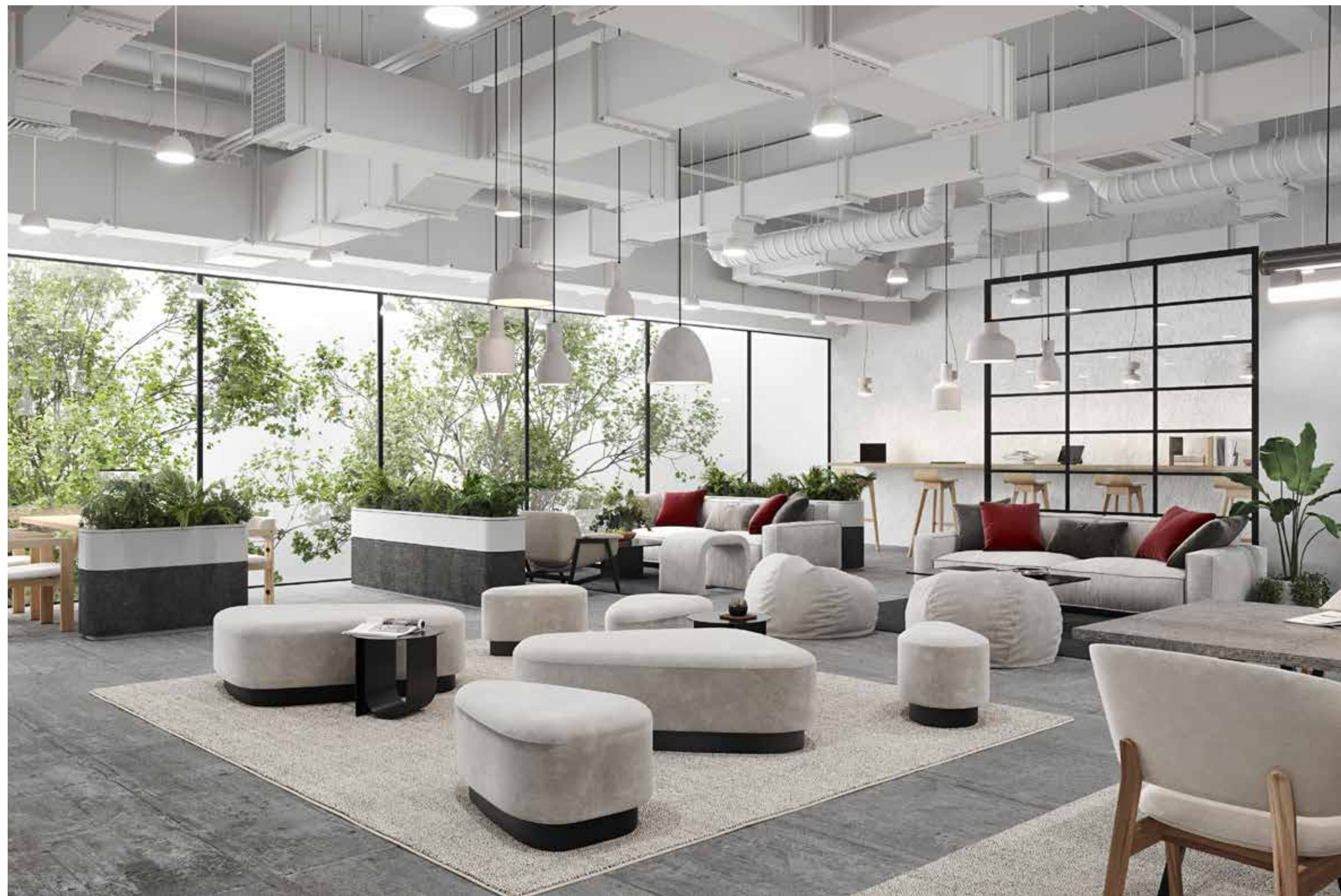
A fresh and flexible interpretation of sophistication, it is poised to redefine a new generation of contemporary entrepreneurs looking to thrive amongst like minds in Lisboa's most happening spots.

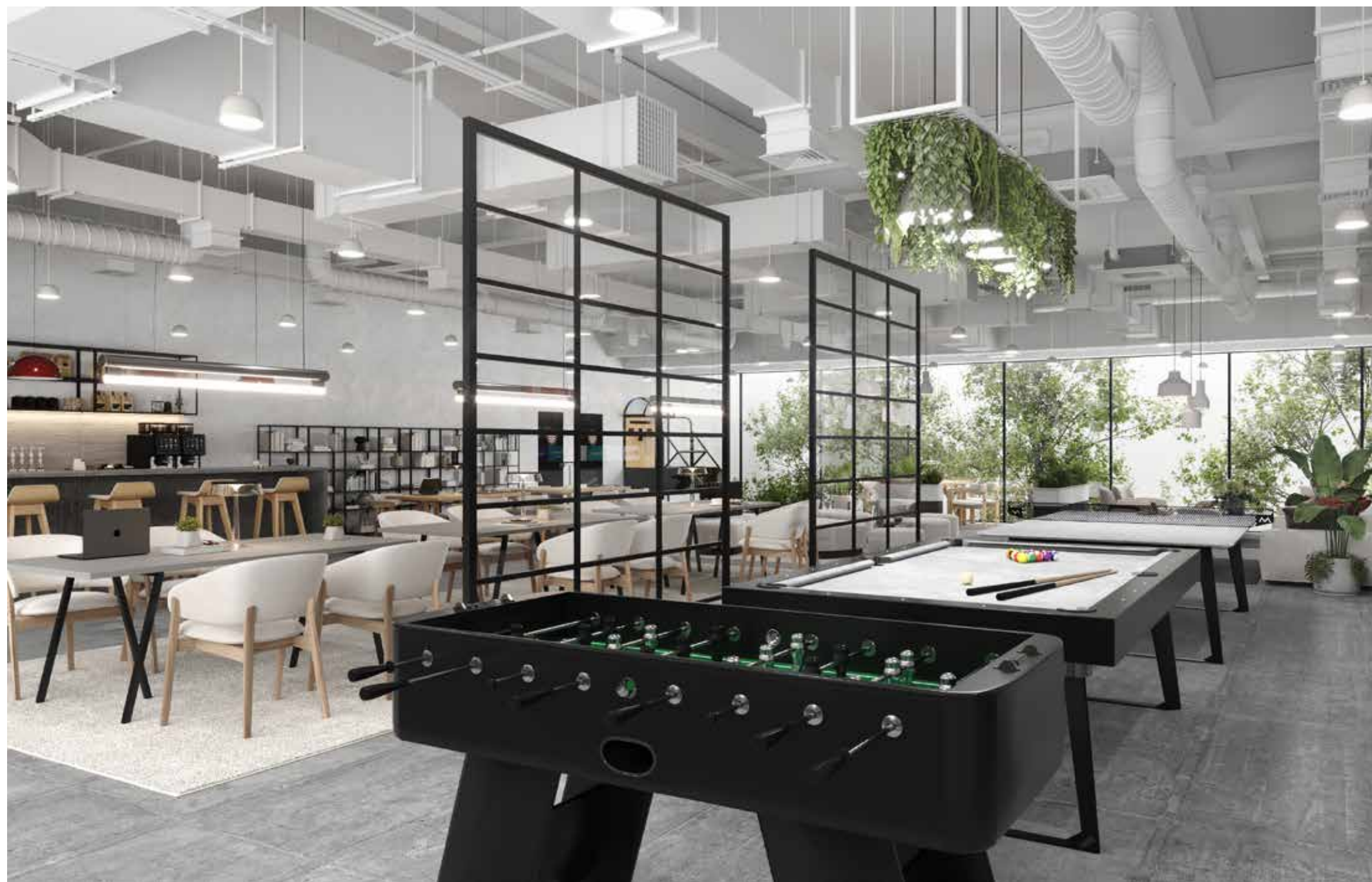
The global workforce habits continue to evolve, increasing demand for primely located workspaces, thus making SoSa Urban Workspaces an ideal investment for savvy investors seeking to benefit from a resilient prime location and rising office real estate market.

The changing landscape of the commercial property sector has opened a wide opportunity, SoSa offers investors a VIP entry to it.









## **A Sleek, Chic, SoSa Vibe!**

Impeccably chic with modern designs, yet functional and flexible

SoSa Urban encourages both work and leisure for a seamless way of working and living. The best of Lisbon's creative minds and social scene is just an elevator ride away to some of the city's finest shopping, dining, and entertainment.

In addition, SoSa Urban offers investors and their families the opportunity to access the world through the Portuguese Golden Visa Program by investing only €350,000.

**SoSa  
LIFESTYLE  
WHEN LIFE  
HAPPENS  
ALSO AT  
WORK**

**WHEN IN**  
*SoSa...*  
**FEEL**  
**CONNECTED**



THE JOB  
YOU DREAM  
IN THE  
PLACE  
YOU WANT



# THE INVESTMENT OPPORTUNITY

- Prime City Centre investment in the heart of Lisbon
- Robust Yields
- Excellent Capital Growth prospects
- Exit Liquidity
- Golden Visa Eligible at €350k



# ARISH PORTUGAL PORTFOLIO



LISBON 2019  
ARISH CAPITAL PARTNERS  
**ALAMEDA TERRACES  
SOLD OUT**

13 Roof-top Terrace Apartments



LISBON 2021  
ARISH CAPITAL PARTNERS  
**CDOQ  
SOLD OUT**

19 Apartments



PORTO 2019  
ARISH CAPITAL PARTNERS  
**SANTA CATARINA PLACE  
SOLD OUT**

37 Apartments



PORTO 2020  
ARISH CAPITAL PARTNERS  
**BAIXA GARDENS  
SOLD OUT**

10 Apartments & 4 Penthouses



PORTO 2020  
ARISH CAPITAL PARTNERS  
**SCP RETAIL  
SOLD OUT**

10 Retail/Commercial Investors



LISBON 2023  
ARISH CAPITAL PARTNERS  
**SOSA URBAN**

135 Commercial Investors



LISBON 2022  
ARISH CAPITAL PARTNERS  
**LIBERTY LISBON  
SOLD OUT**

101 Commercial Investors



GRANDOLA 2022  
ARISH CAPITAL PARTNERS  
**SUN HOUSE  
SOLD OUT**

120 Apartments



ALGARVE 2022  
ARISH CAPITAL PARTNERS  
**SOUTH BEACH SAGRES  
SOLD OUT**

120 Apartments

# ACCESS TO THE WORLD

- 27** Schengen countries visa-free access with Portuguese Residency Card
- 2** Hours Direct flight to London, Paris, Madrid
- 184** Countries visa-free access with Portuguese Passport
- 13.1M** Airline passengers in 2019 and growing
- 27** EU Countries to Live, work , study, access healthcare or retire when holding Portuguese Passport
- 79** Overall destinations. 8 hrs direct flight to New York, Dubai
- 13** Times Award Winning Airport, best in Europe 2019
- 30** Airline carriers, including Emirates, British Airways & United Airlines



## PORTUGAL'S €350,000 GOLDEN VISA BENEFITS



### PORTUGAL

Enter and / or live in Portugal



### TRAVEL

Travel freely within the European Schengen area



### EMPLOYMENT

Employment opportunities and/or be self employed



### SAVING

€150,000 saving on ARU Golden Visa versus standard Golden Visa



### HEALTHCARE

Access to healthcare for the whole family



### EDUCATION

Access to world ranking educational institutions



### RESIDENCY

Apply for Permanent Residency and/or Citizenship for the whole family after 5 years



# PORTUGAL GOLDEN VISA TRACK RECORD

€6.5B  
Invested

11,180  
Investor  
Residencies  
Issued

18,368  
Family  
Members  
Residencies

10  
Years  
Running



## ARISH CAPITAL PARTNERS

With over 65 years of combined experience in real estate investment, finance, fund management and immigration, Arish Capital Partners has uniquely positioned itself as one of the most knowledgeable and innovative solution providers in Portugal, UK and Middle East.

Arish Capital Partners recognize the value a residence permit or second passport can provide to investors, and that such investments need to be proactively managed. In a changing world, residency and citizenship investments are the asset that can fundamentally change the lives of individuals and families.

*“The greatest thing our art and industry do is to erase the lines in the sand. We should continue doing that when the world tells us to make them deeper” - Guillermo del Toro 2018*



info@arishcapitalpartners.com  
+351 916 410 799  
+971 561 116 55 79  
www.arishcapitalpartners.com

\*September 2022 SEF DATA

FREEDOM  
INVEST ABROAD  
LIFESTYLE SHOPPING  
PRIME REAL ESTATE  
DEMOCRACY  
TOLERANT  
FUN  
DREAM  
DIVERSIFY  
HISTORY  
HEALTHCARE  
SoSa URBAN  
TRAVEL OPEN  
SUN  
MOBILITY  
WELCOMING  
SAFETY  
LIVE WELCOMING  
FRIENDS  
HUMAN RIGHTS  
ART  
EQUALITY  
BEACH  
EDUCATION  
ARISH CAPITAL PARTNERS

[www.arishcapitalpartners.com](http://www.arishcapitalpartners.com)