

CORSICA

BY LENNAR



PRELIMINARY ARTIST'S CONCEPT

PRELIMINARY COMMUNITY BROCHURE

MIAMI-DADE, FL

LENNAR[®]

CORSICA

BY LENNAR

Come Home to Corsica

Find your dream home in this family-friendly community offering everything you're looking for and more! Corsica will be home to a private, residents-only Clubhouse where residents can take advantage of the community's wonderful amenities. Spend your weekends soaking up the South Florida sun all year round at our sparkling swimming pool. Hang with your friends and family or get to know your new neighbors in the clubhouse's charming social room. When you're ready to break a sweat, visit our fitness center featuring state-of-the-art equipment. Come home to everything you love at Corsica.



LENNAR[®]



Models/lifestyle photos do not reflect racial or ethnic preference. Scenes may be of locations or activities not on a Lennar property. All photographs, renderings and other depictions are for the sole purpose of illustration. Proposed amenities for the community are subject to changes, substitutions and/or deletions without notice. Lennar makes no representation or guarantee that the community or any amenities will be built out as currently planned. Void where prohibited by law. Lennar and Lennar logo, and ei logo are registered service marks of Lennar Corporation and/or its subsidiaries. Copyright © 2023 Lennar Corporation. All rights reserved. Sellers Broker: Lennar Homes, LLC. Construction License: CGC 062343. 11/20



PRELIMINARY ARTIST'S CONCEPT



PRELIMINARY ARTIST'S CONCEPT



PRELIMINARY ARTIST'S CONCEPT

CORSICA

BY LENNAR



BRION COLLECTION
TOWNHOMES WITHOUT GARAGE

LENNAR®

PRELIMINARY COMMUNITY SITE PLAN



PRELIMINARY ARTIST'S CONCEPT. MAP IS NOT TO SCALE



Site plans and community maps are conceptual in nature and are merely an artist's rendition. These maps are solely for illustrative purposes and should never be relied upon. The past, present, future or proposed roads, easements, land uses, conditions, plat maps, lot sizes or layouts, zoning utilities, drainage, land conditions or development of any type whatsoever, whether reflected on the site plan or map, or whether outside the boundaries of the site plan or map, may not be shown or may be incomplete or inaccurate. The past, present, future or proposed roads, easements, land uses, conditions, plat maps, lot sizes or layouts, zoning utilities, drainage, land conditions or development of any type may or may not change in the future. It is not uncommon that any of the foregoing can change without notice to you. You should never rely on the accuracy of this map in making decisions relative to purchasing any property. We reserve the right to make changes at any time without notice. Map not to scale. Copyright © 2023 Lennar Corporation. All rights reserved. Lennar is a registered service mark or service mark of Lennar Corporation and/or its subsidiaries. Sellers Broker: Lennar Homes, LLC. Construction License: CGC 062343. 11/20

CORSICA

BY LENNAR



PRELIMINARY ARTIST'S CONCEPT

BRION COLLECTION TOWNHOMES WITHOUT GARAGE

LENNAR®

YOUR COMMUNITY

- Built and Marketed by Lennar, one of the Nation's leading homebuilders since 1954, listed on the New York Stock Exchange (LEN).
- Corsica will be a master planned community offering new townhomes and single-family home floorplans.
- A community clubhouse will allow you and your family to enjoy daily workouts in the fitness center, meet your new neighbors in the social room or simply relax poolside.
- Residents will be welcomed by a grand community entry with access control.
- Corsica is located within a Community Development District (CDD). Ask a Lennar New Home Consultant for detail.

EXTERIOR DETAILS

- Elegant front elevations with designer exterior stone and decorative shutters (per plan)
- Beautiful and enduring concrete roof tiles
- Quality CBS construction
- Brick paver walkway, entry and patio areas (per plan)
- Designer exterior paint
- Covered entry
- Code compliant entry door
- Code compliant Hurricane panels
- Privacy fence in rear yard

DESIGNER KITCHEN

- Kitchen cabinets with 36" uppers and brushed nickel hardware
- Pantry closet with ventilated shelves (per plan)
- Easy-care mica countertops with 6" backsplash
- Stainless steel kitchen sink with decorative faucet and sprayer
- Food waste disposal
- Quality stainless steel appliance package featuring:
 - 30" smooth surface electric range with self-cleaning oven
 - Over-the-range built-in microwave with recirculating vent
 - Multi-cycle dishwasher
- USB charger outlet
- Recessed LED downlighting

INNOVATIVE INTERIORS

- 18" x 18" ceramic tile in foyer, kitchen, laundry, and A/C closet in a choice of decorator colors
- Plush stain resistant carpeting with padding in a choice of decorator colors
- Raised-panel interior doors
- Raised-panel bi-fold closet doors
- Colonial style baseboards and door casings
- Elegant interior door hardware
- Designer quality paint on all walls and ceilings
- Textured walls and ceilings in designated areas
- Rocker-style switches throughout
- Category 5e structured wiring for voice in kitchen and en-suite, home run to central distribution panel
- RG6 shielded coaxial television cable in all bedrooms and family room, home run to central distribution panel
- Pre-wired for ceiling fan in family room and all bedrooms (per plan)
- Custom coffer ceiling in Owner's Suite
- Marble window sills throughout
- Smoke and carbon monoxide detectors throughout
- Vinyl-clad ventilated closet shelvings
- Electric water heater
- Central air conditioning and heating system

INSIDE YOUR BATHS

- Vanity cabinets with cultured marble countertops, designer faucets, and brushed nickel hardware
- Double vanity sinks with faucets in en-suite bath (per plan)
- Shower with clear glass enclosure in en-suite bath (per plan)
- Convenient bathtub in secondary bath (per plan)
- 12"x12" Ceramic tile in all bathroom floors and shower walls
- Exhaust fans (per plan)
- Recessed LED downlighting
- Vanity mirror in all baths
- Elegant pedestal sink in first floor powder room (per plan)

LAUNDRY

- Washer and dryer connections provided



**EVERYTHING'S
INCLUDED®**

CORSICA

BY LENNAR



BANDOL
BRION COLLECTION
TOWNHOMES WITHOUT GARAGE

LENNAR®

BANDOL

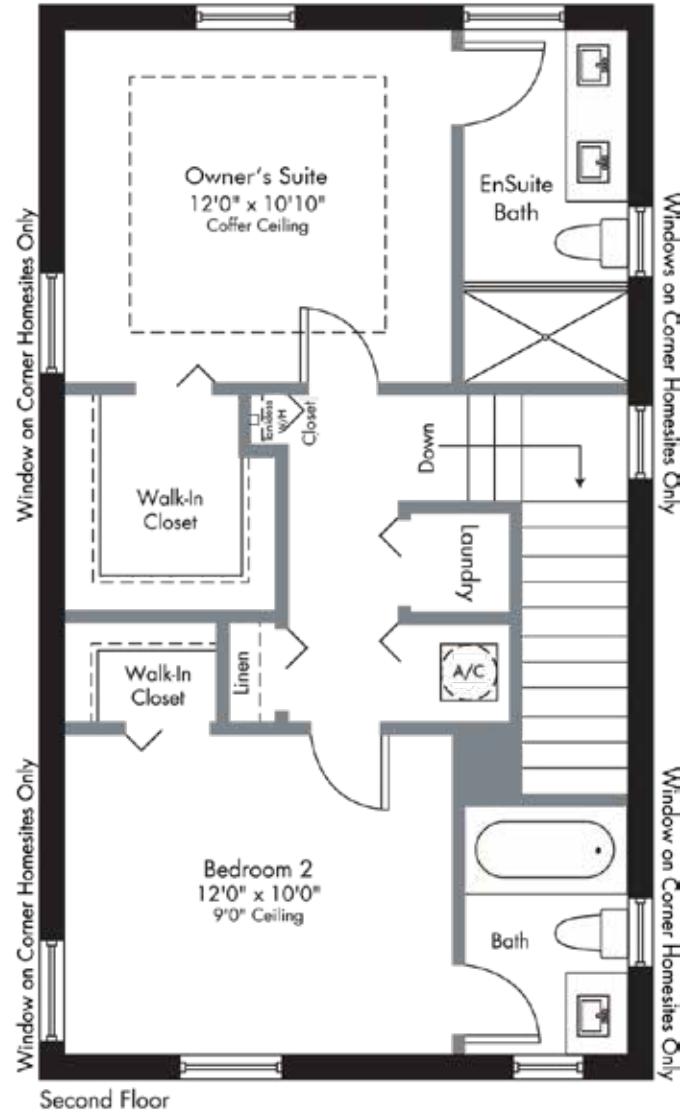
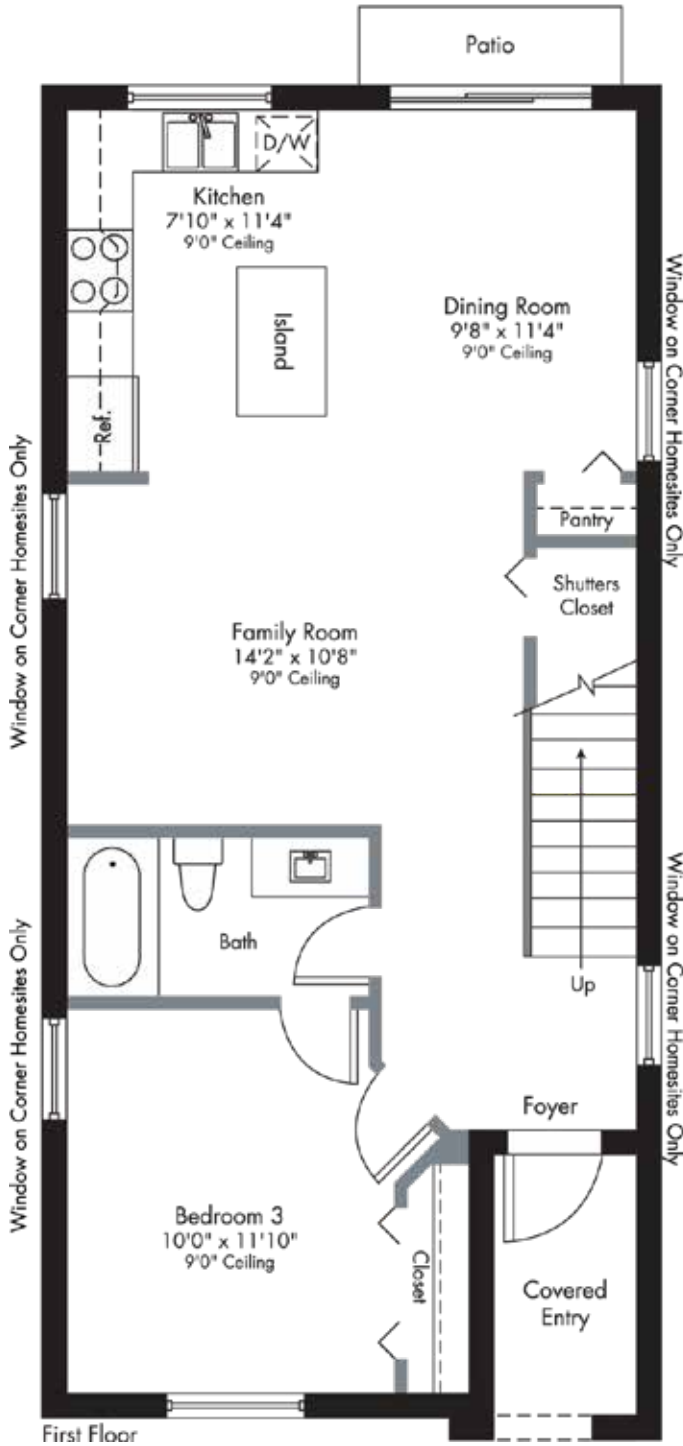
BRION COLLECTION TOWNHOMES WITHOUT GARAGE

2-Story | 3 Bedrooms | 3 Baths | Covered Entry

1,334 SQ FT A/C AREA

43 SQ FT COVERED ENTRY

1,377 SQ FT TOTAL



PRELIMINARY ARTIST'S CONCEPT



Plans and elevations are artist's renderings and may not accurately represent the actual condition of a home as constructed, and may contain options which are not standard on all models. Lennar reserves the right to make changes to these floor plans, specifications, dimensions and elevations without prior notice. Stated dimensions and square footage are approximate and should not be used as representation of the home's precise or actual size. Any statement, verbal or written, regarding "under air" or "finished area" or any other description or modifier of the square footage size of any home is a shorthand description of the manner in which the square footage was estimated and should not be construed to indicate certainty. See a Lennar new home consultant for further information. Garage sizes may vary from home to home and may not accommodate all vehicles. Copyright © 2023 Lennar Corporation. Lennar and the Lennar logo are registered service marks of Lennar Corporation and/or its subsidiaries. Sellers Broker: Lennar Homes, LLC. Construction License: CGC 062343. 11/20

CORSICA

BY LENNAR



CASIS

BRION COLLECTION
TOWNHOMES WITHOUT GARAGE

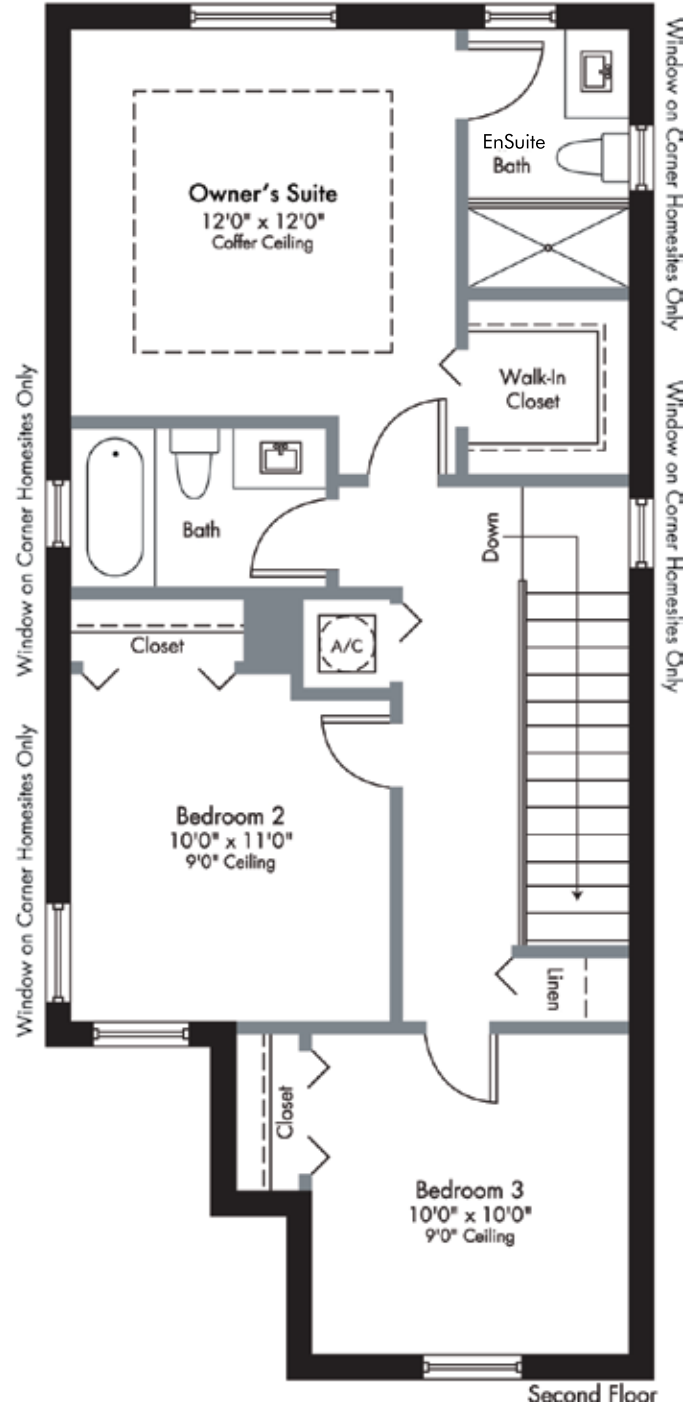
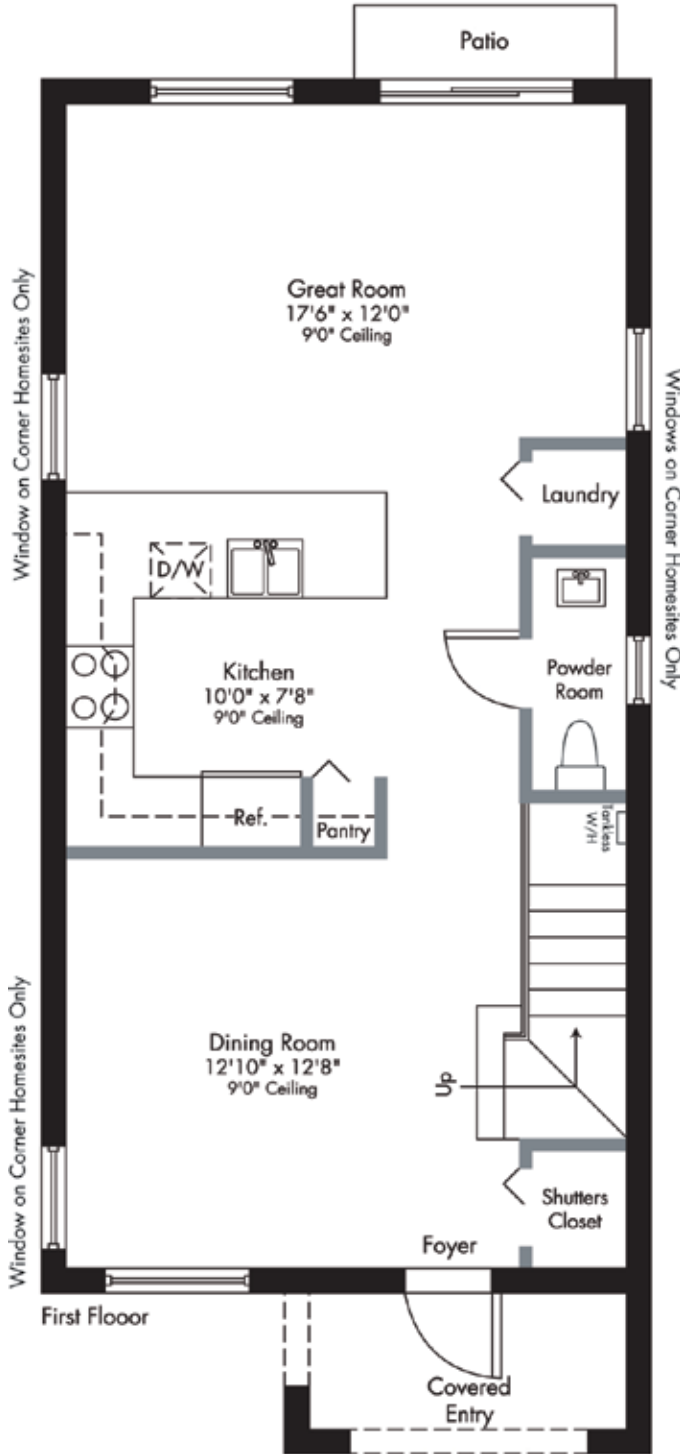
LENNAR[®]

CASIS

BRION COLLECTION TOWNHOMES WITHOUT GARAGE

2-Story | 3 Bedrooms | 2.5 Baths | Great Room
Covered Entry

1,414	SQ FT	A/C AREA
56	SQ FT	COVERED ENTRY
1,470	SQ FT	TOTAL



PRELIMINARY ARTIST'S CONCEPT



Plans and elevations are artist's renderings and may not accurately represent the actual condition of a home as constructed, and may contain options which are not standard on all models. Lennar reserves the right to make changes to these floor plans, specifications, dimensions and elevations without prior notice. Stated dimensions and square footage are approximate and should not be used as representation of the home's precise or actual size. Any statement, verbal or written, regarding "under air" or "finished area" or any other description or modifier of the square footage size of any home is a shorthand description of the manner in which the square footage was estimated and should not be construed to indicate certainty. See a Lennar new home consultant for further information. Garage sizes may vary from home to home and may not accommodate all vehicles. Copyright © 2023 Lennar Corporation. Lennar and the Lennar logo are registered service marks of Lennar Corporation and/or its subsidiaries. Sellers Broker: Lennar Homes, LLC. Construction License: CGC 062343. 11/20

CORSICA

BY LENNAR



MONTE CARLO
BRION COLLECTION
TOWNHOMES WITHOUT GARAGE

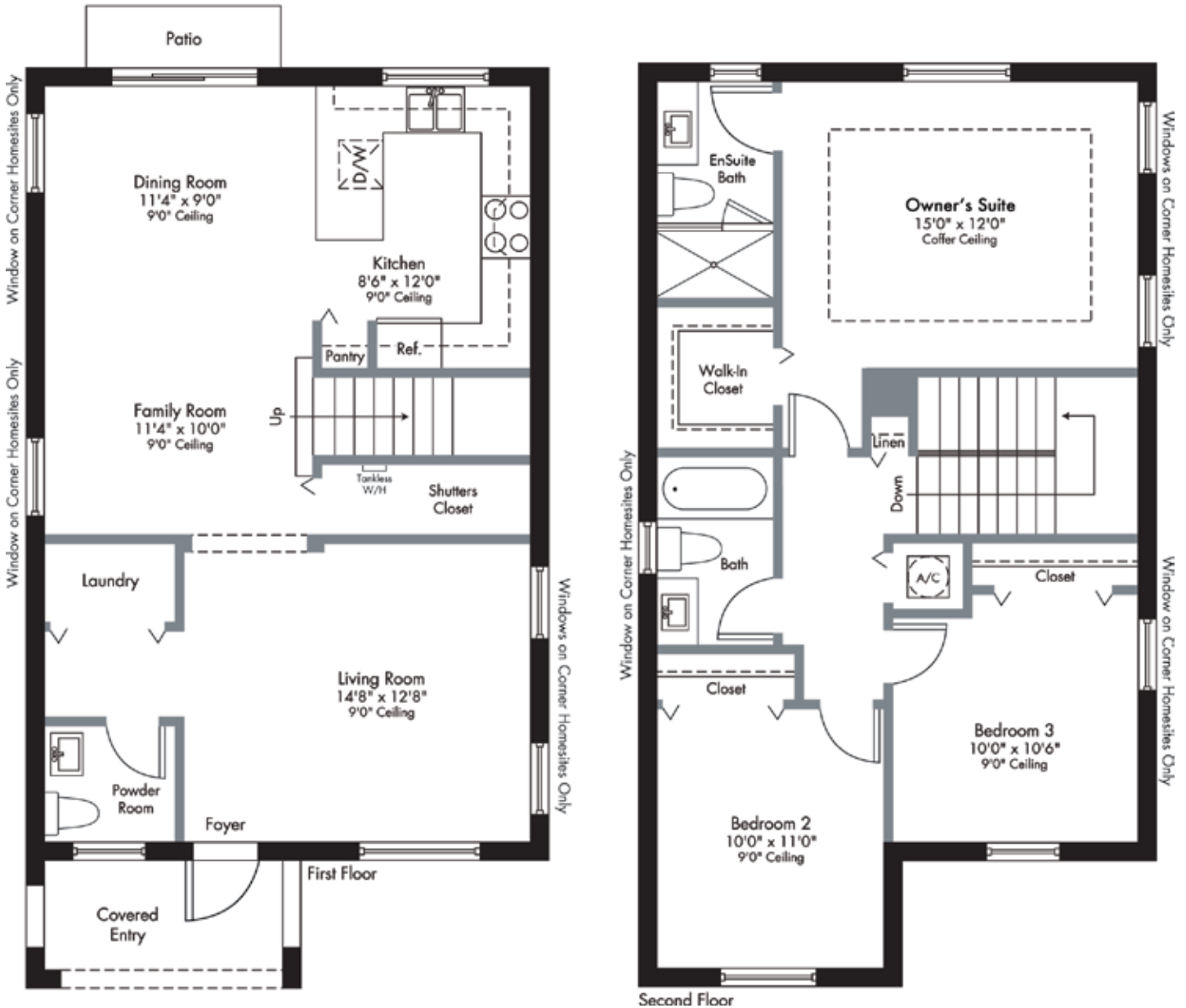
LENNAR®

MONTE CARLO


BRION COLLECTION TOWNHOMES WITHOUT GARAGE

2-Story | 3 Bedrooms | 2.5 Baths | Family Room
Covered Entry

1,489	SQ FT	A/C AREA
59	SQ FT	COVERED ENTRY
1,548	SQ FT	TOTAL



PRELIMINARY ARTIST'S CONCEPT

 Plans and elevations are artist's renderings and may not accurately represent the actual condition of a home as constructed, and may contain options which are not standard on all models. Lennar reserves the right to make changes to these floor plans, specifications, dimensions and elevations without prior notice. Stated dimensions and square footage are approximate and should not be used as representation of the home's precise or actual size. Any statement, verbal or written, regarding "under air" or "finished area" or any other description or modifier of the square footage size of any home is a shorthand description of the manner in which the square footage was estimated and should not be construed to indicate certainty. See a Lennar new home consultant for further information. Garage sizes may vary from home to home and may not accommodate all vehicles. Copyright © 2023 Lennar Corporation. Lennar and the Lennar logo are registered service marks of Lennar Corporation and/or its subsidiaries. Sellers Broker: Lennar Homes, LLC. Construction License: CGC 062343. 11/20

CORSICA

BY LENNAR



RESERVE

BRION COLLECTION

TOWNHOMES WITHOUT GARAGE

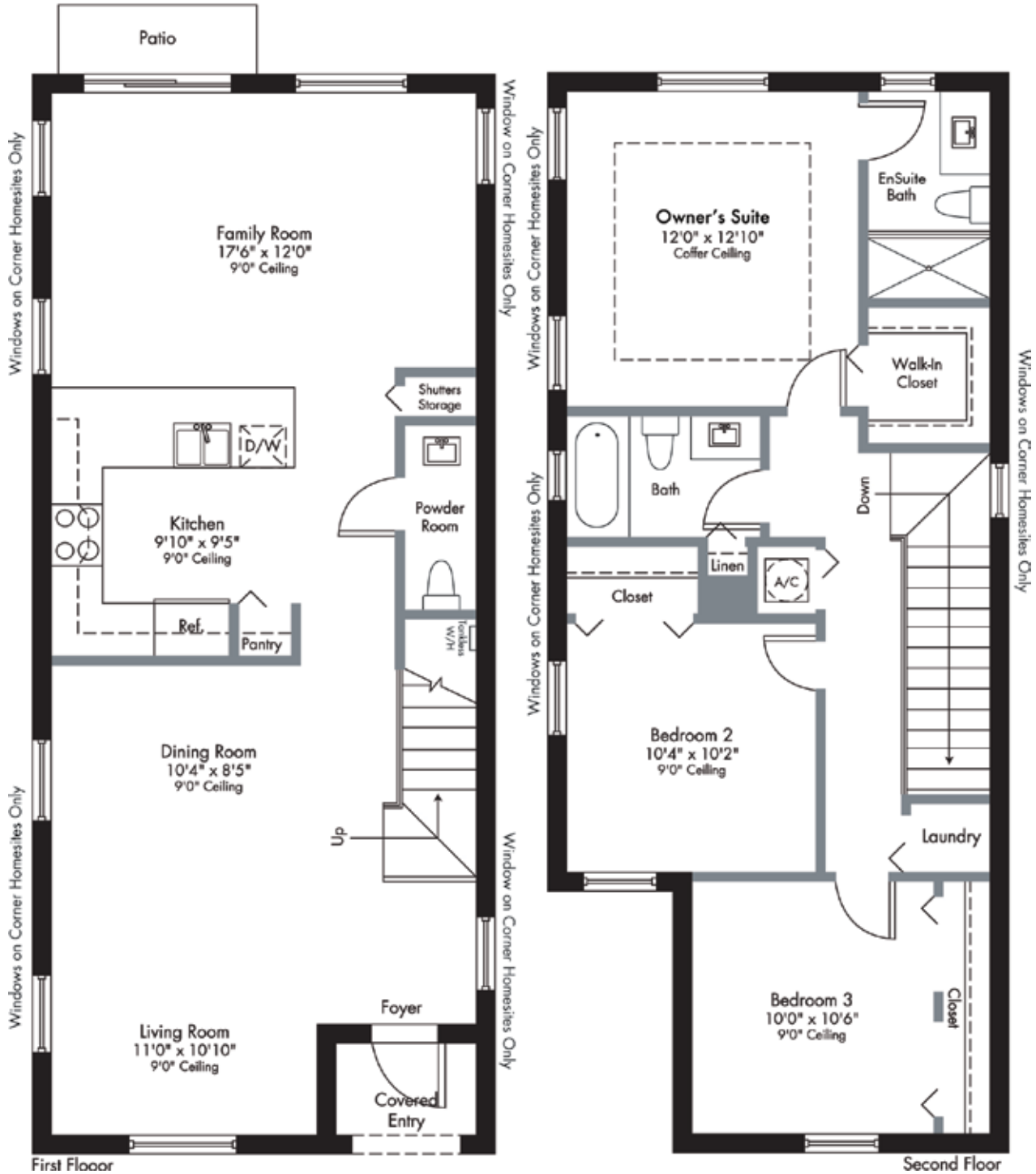
LENNAR®

RESERVE

BRION COLLECTION TOWNHOMES WITHOUT GARAGE

2-Story | 3 Bedrooms | 2.5 Baths | Family Room
Covered Entry

1,545	SQ FT	A/C AREA
28	SQ FT	COVERED ENTRY
1,573	SQ FT	TOTAL



PRELIMINARY ARTIST'S CONCEPT



Plans and elevations are artist's renderings and may not accurately represent the actual condition of a home as constructed, and may contain options which are not standard on all models. Lennar reserves the right to make changes to these floor plans, specifications, dimensions and elevations without prior notice. Stated dimensions and square footage are approximate and should not be used as representation of the home's precise or actual size. Any statement, verbal or written, regarding "under air" or "finished area" or any other description or modifier of the square footage size of any home is a shorthand description of the manner in which the square footage was estimated and should not be construed to indicate certainty. See a Lennar new home consultant for further information. Garage sizes may vary from home to home and may not accommodate all vehicles. Copyright © 2023 Lennar Corporation. Lennar and the Lennar logo are registered service marks of Lennar Corporation and/or its subsidiaries. Sellers Broker: Lennar Homes, LLC. Construction License: CGC 062343. 11/20

CORSICA

BY LENNAR



VENICE

BRION COLLECTION
TOWNHOMES WITHOUT GARAGE

LENNAR[®]

VENCE

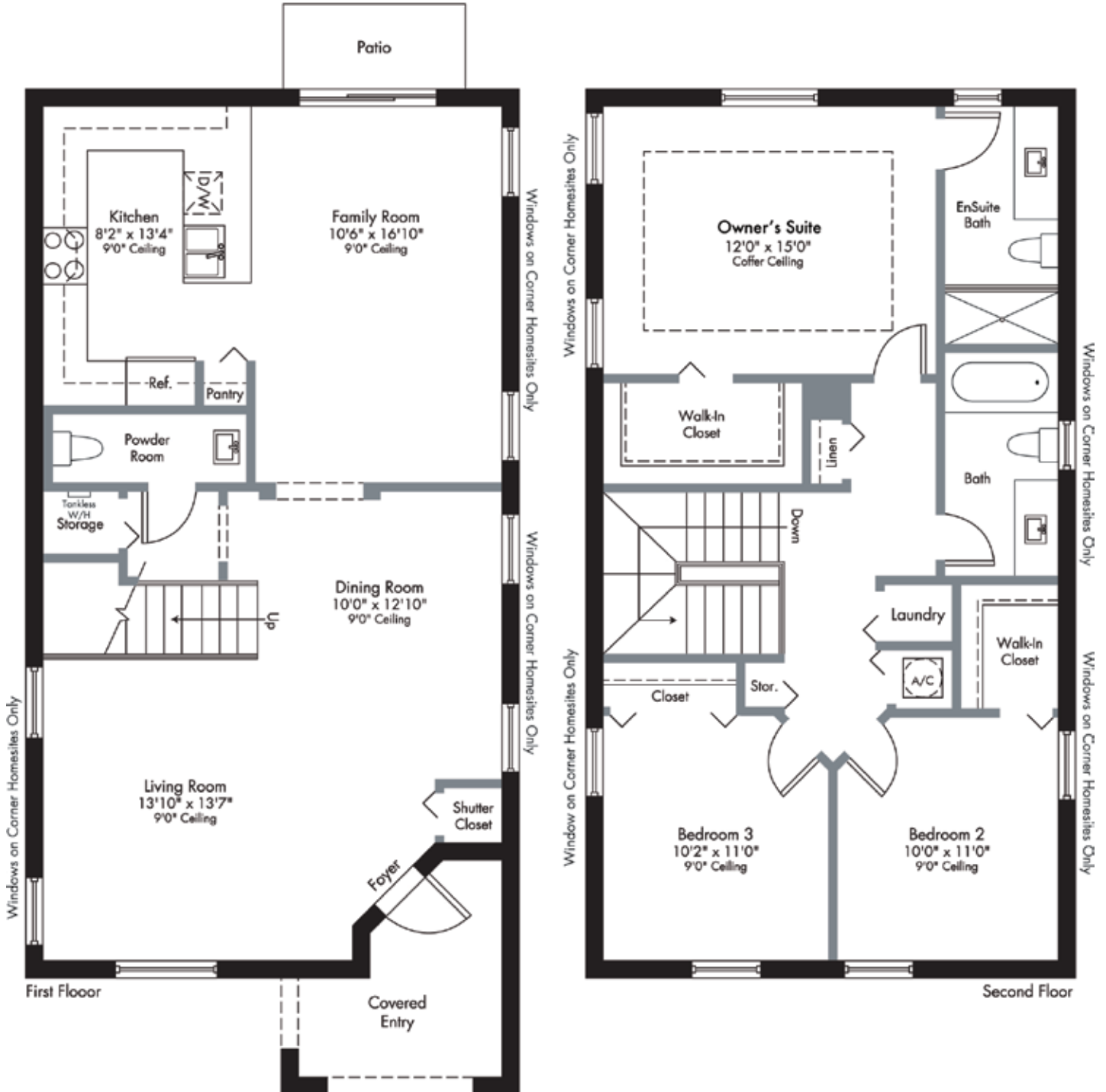
BRION COLLECTION TOWNHOMES WITHOUT GARAGE

2-Story | 3 Bedrooms | 2.5 Baths | Family Room
Covered Entry

1,668 SQ FT A/C AREA

81 SQ FT COVERED ENTRY

1,749 SQ FT TOTAL



PRELIMINARY ARTIST'S CONCEPT



Plans and elevations are artist's renderings and may not accurately represent the actual condition of a home as constructed, and may contain options which are not standard on all models. Lennar reserves the right to make changes to these floor plans, specifications, dimensions and elevations without prior notice. Stated dimensions and square footage are approximate and should not be used as representation of the home's precise or actual size. Any statement, verbal or written, regarding "under air" or "finished area" or any other description or modifier of the square footage size of any home is a shorthand description of the manner in which the square footage was estimated and should not be construed to indicate certainty. See a Lennar new home consultant for further information. Garage sizes may vary from home to home and may not accommodate all vehicles. Copyright © 2023 Lennar Corporation. Lennar and the Lennar logo are registered service marks of Lennar Corporation and/or its subsidiaries. Sellers Broker: Lennar Homes, LLC. Construction License: CGC 062343. 11/20

CORSICA

BY LENNAR



PROVINCE COLLECTION TOWNHOMES WITH GARAGE

LENNAR

PRELIMINARY COMMUNITY SITE PLAN



PRELIMINARY ARTIST'S CONCEPT. MAP IS NOT TO SCALE



Site plans and community maps are conceptual in nature and are merely an artist's rendition. These maps are solely for illustrative purposes and should never be relied upon. The past, present, future or proposed roads, easements, land uses, conditions, plat maps, lot sizes or layouts, zoning utilities, drainage, land conditions or development of any type whatsoever, whether reflected on the site plan or map, or whether outside the boundaries of the site plan or map, may not be shown or may be incomplete or inaccurate. The past, present, future or proposed roads, easements, land uses, conditions, plat maps, lot sizes or layouts, zoning utilities, drainage, land conditions or development of any type may or may not change in the future. It is not uncommon that any of the foregoing can change without notice to you. You should never rely on the accuracy of this map in making decisions relative to purchasing any property. We reserve the right to make changes at any time without notice. Map not to scale. Copyright © 2023 Lennar Corporation. All rights reserved. Lennar is a registered service mark or service mark of Lennar Corporation and/or its subsidiaries. Sellers Broker: Lennar Homes, LLC. Construction License: CGC 062343. 11/20

CORSICA

BY LENNAR



PROVINCE COLLECTION
TOWNHOMES WITH GARAGE

LENNAR[®]

YOUR COMMUNITY

- Built and Marketed by Lennar, one of the Nation's leading homebuilders since 1954, listed on the New York Stock Exchange (LEN).
- Corsica will be a master planned community offering new townhomes and single-family home floorplans.
- A community clubhouse will allow you and your family to enjoy daily workouts in the fitness center, meet your new neighbors in the social room or simply relax poolside.
- Residents will be welcomed by a grand community entry with access control.
- Corsica is located within a Community Development District (CDD). Ask a Lennar New Home Consultant for detail.

EXTERIOR DETAILS

- Elegant front elevations with designer exterior stone and decorative shutters (per plan)
- Beautiful and enduring concrete roof tiles
- Quality CBS construction
- Brick paver driveway, walkway, entry and patio areas (per plan)
- Designer exterior paint
- Covered entry
- Code compliant entry door
- Code compliant garage door
- Pre-wire for garage door opener
- Code compliant Hurricane panels
- Privacy fence in rear yard

DESIGNER KITCHEN

- Kitchen cabinets with 36" uppers with brushed nickel hardware
- Pantry closet with ventilated shelves
- Easy-care mica countertops with 6" backsplash
- Stainless steel kitchen sink with decorative faucet and sprayer
- Food waste disposal
- Quality stainless steel appliance package featuring:
 - 30" smooth surface electric range with self-cleaning oven
 - Over-the-range built-in microwave with recirculating vent
 - Multi-cycle dishwasher
- USB charger outlet
- Recessed LED downlighting

INNOVATIVE INTERIORS

- 18" x 18" ceramic tile in foyer, kitchen, laundry, and A/C closet in a choice of decorator colors
- Plush stain resistant carpeting with padding in a choice of decorator colors
- Raised-panel interior doors
- Raised-panel bi-fold closet doors
- Colonial style baseboards and door casings
- Elegant interior door hardware
- Designer quality paint on all walls and ceilings
- Textured walls and ceilings in designated areas
- Rocker-style switches throughout
- Category 5e structured wiring for voice in kitchen and Owner's Suite, home run to central distribution panel
- RG6 shielded coaxial television cable in all bedrooms and family room, home run to central distribution panel
- Pre-wired for ceiling fan in family room and all bedrooms (per plan)
- Custom coffer ceiling in Owner's Suite
- Marble window sills throughout
- Smoke and carbon monoxide detectors throughout
- Vinyl-clad ventilated closet shelvings
- Electric water heater
- Central air conditioning and heating system

INSIDE YOUR BATHS

- Vanity cabinets with cultured marble countertops, designer faucets, and brushed nickel hardware
- Double vanity sinks with faucets in En-Suite Bath
- Shower with clear glass enclosure in En-Suite Bath (per plan)
- Convenient bathtub in secondary bath
- 12"x12" Ceramic tile in all bathroom floors and shower walls
- Exhaust fans (per plan)
- Recessed LED downlighting
- Vanity mirror in all baths
- Elegant pedestal sink in first floor powder room

LAUNDRY

- Washer and dryer connections provided



**EVERYTHING'S
INCLUDED®**

CORSICA

BY LENNAR



AVIGNON

PROVINCE COLLECTION
TOWNHOMES WITH GARAGE

LENNAR®

AVIGNON

PROVINCE COLLECTION TOWNHOMES WITH GARAGE

2-Story | 3 Bedrooms | 2.5 Baths | Family Room
Covered Entry | Garage

1,334	SQ FT	A/C AREA
232	SQ FT	GARAGE
67	SQ FT	COVERED ENTRY
1,633	SQ FT	TOTAL



PRELIMINARY ARTIST'S CONCEPT



Plans and elevations are artist's renderings and may not accurately represent the actual condition of a home as constructed, and may contain options which are not standard on all models. Lennar reserves the right to make changes to these floor plans, specifications, dimensions and elevations without prior notice. Stated dimensions and square footage are approximate and should not be used as representation of the home's precise or actual size. Any statement, verbal or written, regarding "under air" or "finished area" or any other description or modifier of the square footage size of any home is a shorthand description of the manner in which the square footage was estimated and should not be construed to indicate certainty. See a Lennar new home consultant for further information. Garage sizes may vary from home to home and may not accommodate all vehicles. Copyright © 2023 Lennar Corporation. Lennar and the Lennar logo are registered service marks of Lennar Corporation and/or its subsidiaries. Sellers Broker: Lennar Homes, LLC. Construction License: CGC 062343. 11/20

CORSICA

BY LENNAR



BORDEAUX

PROVINCE COLLECTION
TOWNHOMES WITH GARAGE

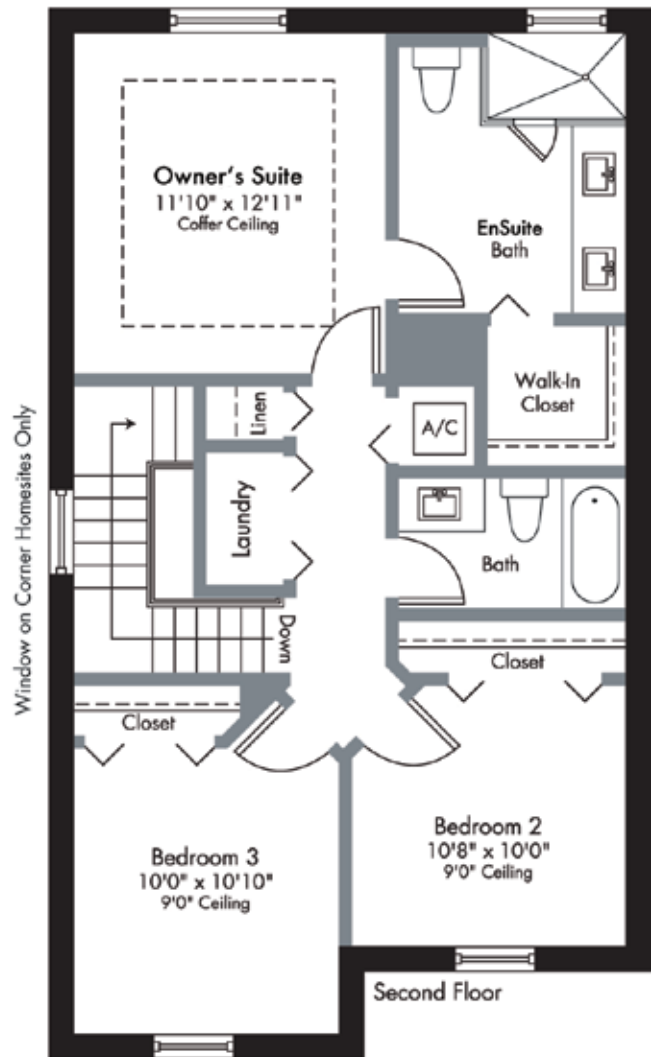
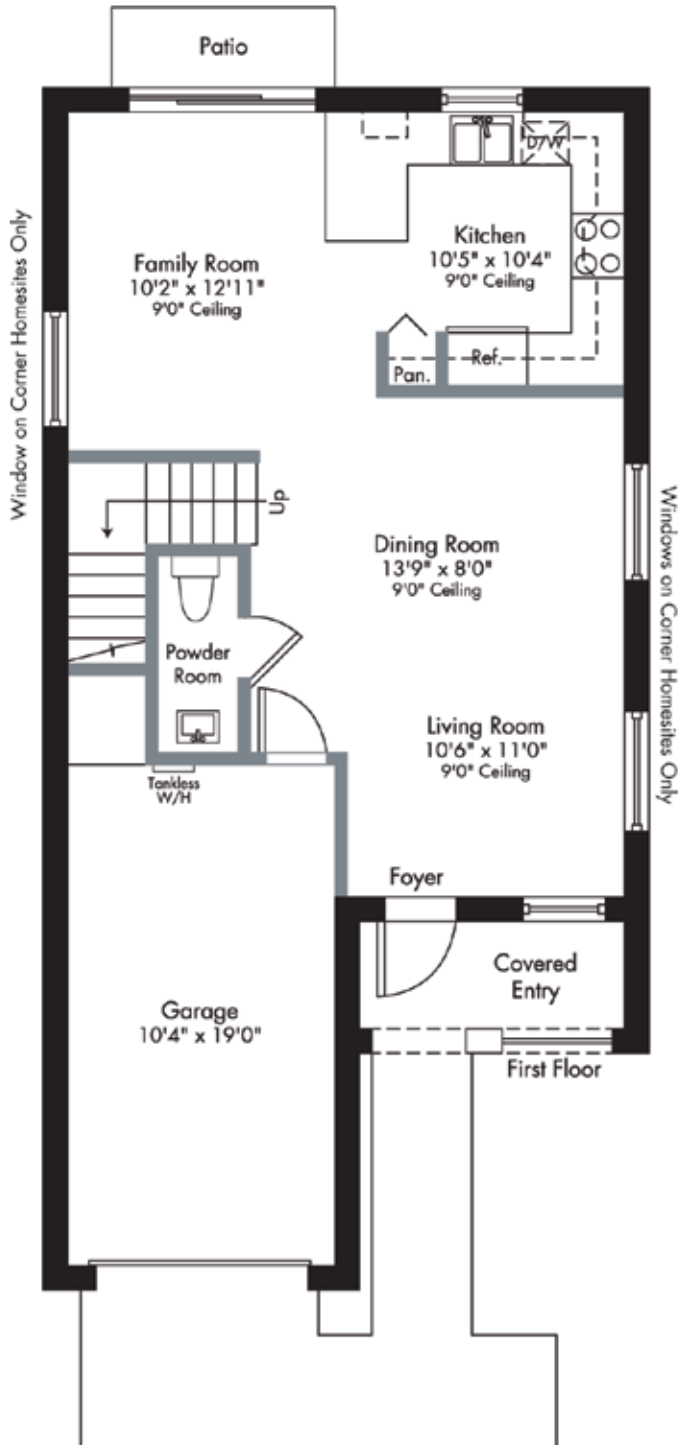
LENNAR[®]

BORDEAUX

PROVINCE COLLECTION TOWNHOMES WITH GARAGE

2-Story | 3 Bedrooms | 2.5 Baths | Family Room
Covered Entry | Garage

1,443	SQ FT	A/C AREA
238	SQ FT	GARAGE
51	SQ FT	COVERED ENTRY
1,732	SQ FT	TOTAL



PRELIMINARY ARTIST'S CONCEPT



Plans and elevations are artist's renderings and may not accurately represent the actual condition of a home as constructed, and may contain options which are not standard on all models. Lennar reserves the right to make changes to these floor plans, specifications, dimensions and elevations without prior notice. Stated dimensions and square footage are approximate and should not be used as representation of the home's precise or actual size. Any statement, verbal or written, regarding "under air" or "finished area" or any other description or modifier of the square footage size of any home is a shorthand description of the manner in which the square footage was estimated and should not be construed to indicate certainty. See a Lennar new home consultant for further information. Garage sizes may vary from home to home and may not accommodate all vehicles. Copyright © 2023 Lennar Corporation. Lennar and the Lennar logo are registered service marks of Lennar Corporation and/or its subsidiaries. Sellers Broker: Lennar Homes, LLC. Construction License: CGC 062343. 11/20

CORSICA

BY LENNAR



DIJON

PROVINCE COLLECTION
TOWNHOMES WITH GARAGE

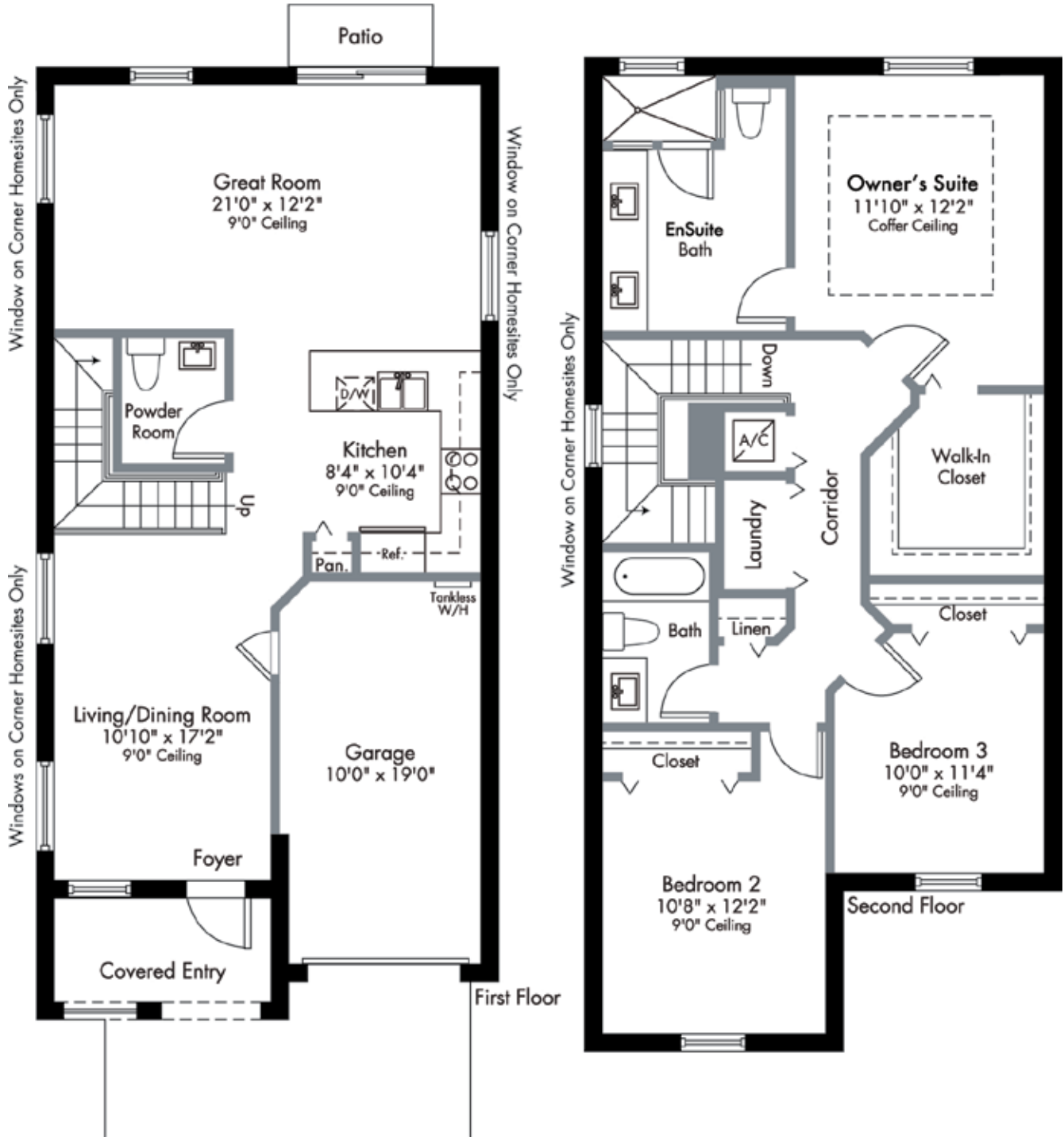
LENNAR®

DIJON

PROVINCE COLLECTION TOWNHOMES WITH GARAGE

2-Story | 3 Bedrooms | 2.5 Baths | Great Room
Covered Entry | Garage

1,697	SQ FT	A/C AREA
209	SQ FT	GARAGE
73	SQ FT	COVERED ENTRY
1,979	SQ FT	TOTAL



PRELIMINARY ARTIST'S CONCEPT



Plans and elevations are artist's renderings and may not accurately represent the actual condition of a home as constructed, and may contain options which are not standard on all models. Lennar reserves the right to make changes to these floor plans, specifications, dimensions and elevations without prior notice. Stated dimensions and square footage are approximate and should not be used as representation of the home's precise or actual size. Any statement, verbal or written, regarding "under air" or "finished area" or any other description or modifier of the square footage size of any home is a shorthand description of the manner in which the square footage was estimated and should not be construed to indicate certainty. See a Lennar new home consultant for further information. Garage sizes may vary from home to home and may not accommodate all vehicles. Copyright © 2023 Lennar Corporation. Lennar and the Lennar logo are registered service marks of Lennar Corporation and/or its subsidiaries. Sellers Broker: Lennar Homes, LLC. Construction License: CGC 062343. 11/20

CORSICA

BY LENNAR



LORIENT

PROVINCE COLLECTION
TOWNHOMES WITH GARAGE

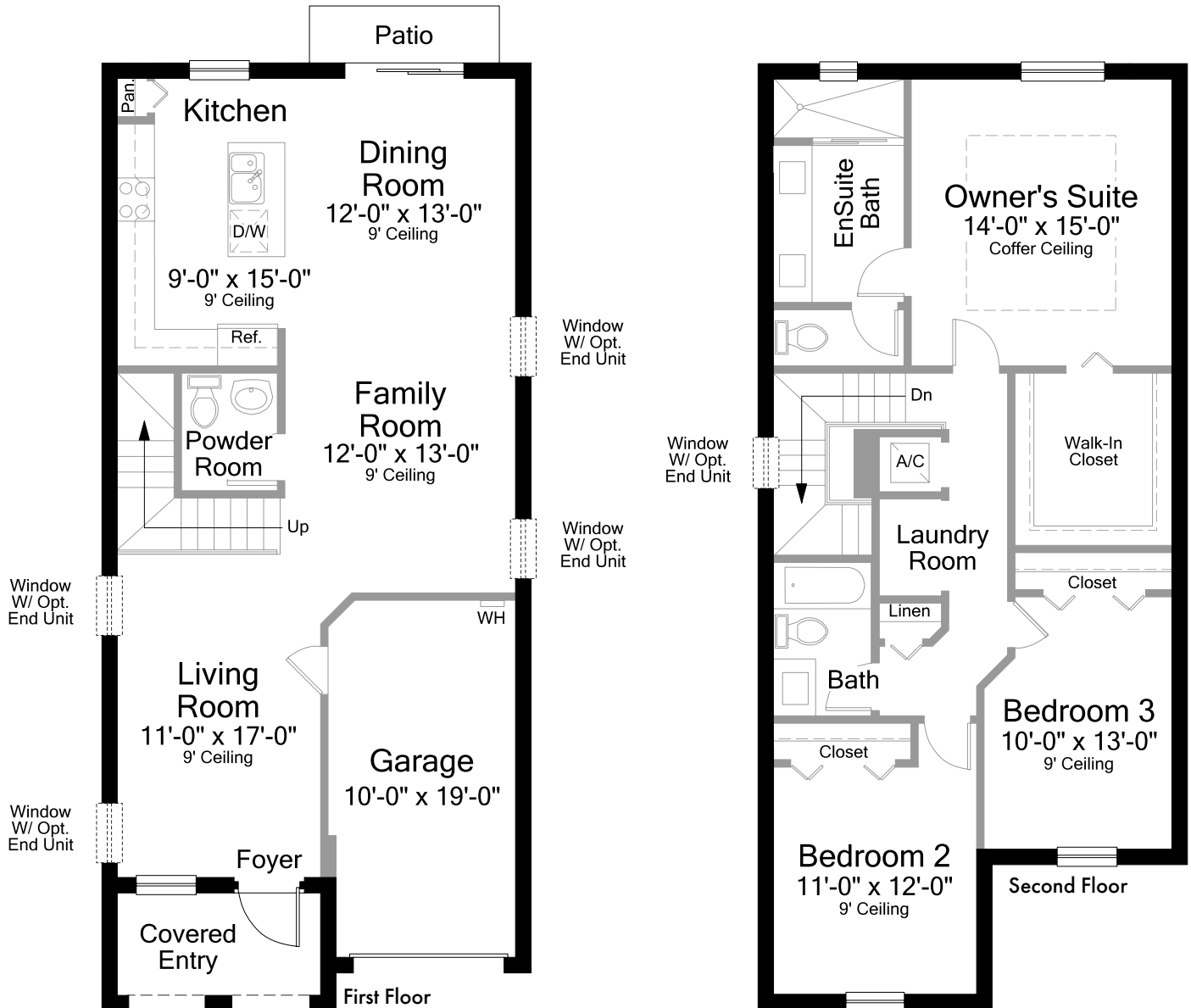
LENNAR®

LORIENT


PROVINCE COLLECTION TOWNHOMES WITH GARAGE

2-Story | 3 Bedrooms | 2.5 Baths | Family Room
Covered Entry | Garage

1,828	SQ FT	A/C AREA
198	SQ FT	GARAGE
71	SQ FT	COVERED ENTRY
2,097	SQ FT	TOTAL



PRELIMINARY ARTIST'S CONCEPT

 Plans and elevations are artist's renderings and may not accurately represent the actual condition of a home as constructed, and may contain options which are not standard on all models. Lennar reserves the right to make changes to these floor plans, specifications, dimensions and elevations without prior notice. Stated dimensions and square footage are approximate and should not be used as representation of the home's precise or actual size. Any statement, verbal or written, regarding "under air" or "finished area" or any other description or modifier of the square footage size of any home is a shorthand description of the manner in which the square footage was estimated and should not be construed to indicate certainty. See a Lennar new home consultant for further information. Garage sizes may vary from home to home and may not accommodate all vehicles. Copyright © 2023 Lennar Corporation. Lennar and the Lennar logo are registered service marks of Lennar Corporation and/or its subsidiaries. Sellers Broker: Lennar Homes, LLC. Construction License: CGC 062343. 04/23

CORSICA

BY LENNAR



MARSEILLE
PROVINCE COLLECTION
TOWNHOMES WITH GARAGE

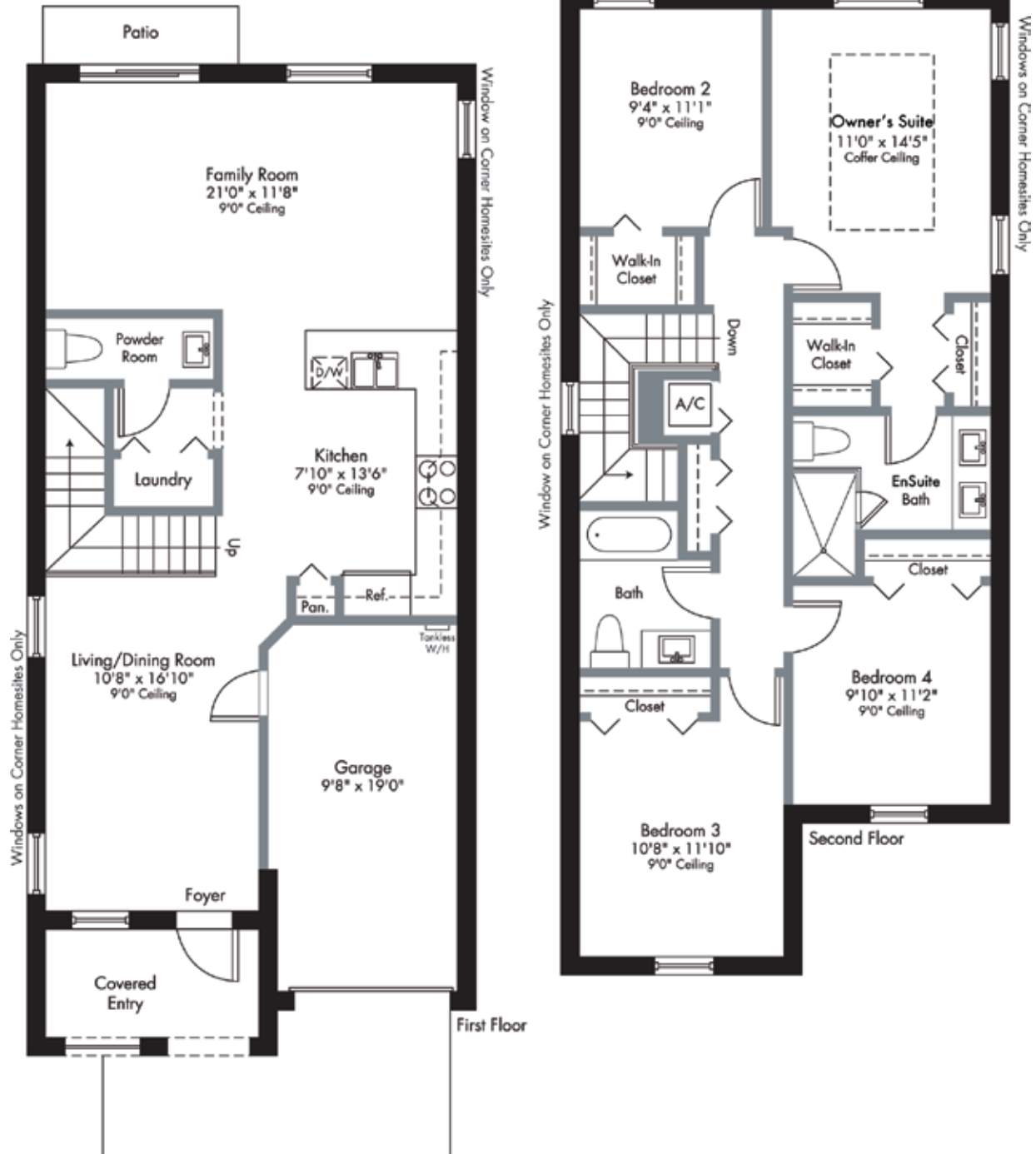
LENNAR®

MARSEILLE

PROVINCE COLLECTION TOWNHOMES WITH GARAGE

2-Story | 4 Bedrooms | 2.5 Baths | Family Room
Covered Entry | Garage

1,828	SQ FT	A/C AREA
204	SQ FT	GARAGE
71	SQ FT	COVERED ENTRY
2,103	SQ FT	TOTAL



PRELIMINARY ARTIST'S CONCEPT



Plans and elevations are artist's renderings and may not accurately represent the actual condition of a home as constructed, and may contain options which are not standard on all models. Lennar reserves the right to make changes to these floor plans, specifications, dimensions and elevations without prior notice. Stated dimensions and square footage are approximate and should not be used as representation of the home's precise or actual size. Any statement, verbal or written, regarding "under air" or "finished area" or any other description or modifier of the square footage size of any home is a shorthand description of the manner in which the square footage was estimated and should not be construed to indicate certainty. See a Lennar new home consultant for further information. Garage sizes may vary from home to home and may not accommodate all vehicles. Copyright © 2023 Lennar Corporation. Lennar and the Lennar logo are registered service marks of Lennar Corporation and/or its subsidiaries. Sellers Broker: Lennar Homes, LLC. Construction License: CGC 062343. 11/20

CORSICA

BY LENNAR



SANTORINI COLLECTION SINGLE-FAMILY HOMES

LENNAR

PRELIMINARY COMMUNITY SITE PLAN



PRELIMINARY ARTIST'S CONCEPT. MAP IS NOT TO SCALE



Site plans and community maps are conceptual in nature and are merely an artist's rendition. These maps are solely for illustrative purposes and should never be relied upon. The past, present, future or proposed roads, easements, land uses, conditions, plat maps, lot sizes or layouts, zoning utilities, drainage, land conditions or development of any type whatsoever, whether reflected on the site plan or map, or whether outside the boundaries of the site plan or map, may not be shown or may be incomplete or inaccurate. The past, present, future or proposed roads, easements, land uses, conditions, plat maps, lot sizes or layouts, zoning utilities, drainage, land conditions or development of any type may or may not change in the future. It is not uncommon that any of the foregoing can change without notice to you. You should never rely on the accuracy of this map in making decisions relative to purchasing any property. We reserve the right to make changes at any time without notice. Map not to scale. Copyright © 2023 Lennar Corporation. All rights reserved. Lennar is a registered service mark or service mark of Lennar Corporation and/or its subsidiaries. Sellers Broker: Lennar Homes, LLC. Construction License: CGC 062343. 11/20

CORSICA

B Y L E N N A R

YOUR COMMUNITY

- Built and Marketed by Lennar, one of the Nation's leading homebuilders since 1954, listed on the New York Stock Exchange (LEN).
- Corsica will be a master planned community offering new townhomes and single-family home floorplans.
- A community clubhouse will allow you and your family to enjoy daily workouts in the fitness center, meet your new neighbors in the social room or simply relax poolside.
- Residents will be welcomed by a grand community entry with access control.
- Corsica is located within a Community Development District (CDD). Ask a Lennar New Home Consultant for detail.

EXTERIOR DETAILS

- Elegant front elevations with designer exterior stone and decorative shutters (per plan)
- Beautiful and enduring concrete roof tile
- Quality CBS construction
- Brick paver driveway, walkway, entry and patio areas
- Designer exterior paint in choice of decorator schemes
- Covered entry
- Code compliant entry door
- Code compliant garage door
- Pre-wire for garage door opener
- Exterior hose bibs (per plan)
- Code compliant Hurricane panels

DESIGNER KITCHEN

- Kitchen cabinets with 36" uppers and brushed nickel hardware
- Pantry closet with ventilated shelves (per plan)
- Easy-care mica countertops with 6" backsplash
- Stainless steel kitchen sink with decorative faucet and sprayer
- Food waste disposal
- Quality stainless steel appliance package featuring:
 - 30" smooth surface electric range with self-cleaning oven
 - Over-the-range built-in microwave with recirculating vent
 - Multi-cycle dishwasher
- USB charger outlet
- Recessed LED downlighting

INNOVATIVE INTERIORS

- 18" x 18" ceramic tile in foyer, kitchen, laundry, and A/C closet in a choice of decorator colors
- Plush stain resistant carpeting with padding in a choice of decorator colors
- Raised-panel interior doors
- Raised-panel bi-fold closet doors
- Colonial style baseboards and door casings
- Elegant interior door hardware
- Designer quality paint on all walls and ceilings
- Textured walls and ceilings in designated areas
- Rocker-style switches throughout
- Category 5e structured wiring for voice in kitchen and Owner's Suite, home run to central distribution panel
- RG6 shielded coaxial television cable in all bedrooms and family room, home run to central distribution panel
- Pre-wired for ceiling fan in family room and all bedrooms (per plan)
- Custom coffer ceilings in Owner's Suite
- Marble window sills throughout
- Smoke and carbon monoxide detectors throughout
- Vinyl-clad ventilated closet shelvings
- Electric water heater
- Central air conditioning and heating system

INSIDE YOUR BATHS

- Vanity cabinets with cultured marble countertops, designer faucets, and brushed nickel hardware
- Double vanity sinks with faucets in En-Suite Bath
- Shower with clear glass enclosure in En-Suite Bath (per plan)
- Convenient bathtub in secondary bath (per plan)
- 12"x12" Ceramic tile in all bathroom floors and shower walls
- Exhaust fans (per plan)
- Recessed LED downlighting
- Vanity mirror in all baths
- Elegant pedestal sink in first floor powder bath (per plan)

LAUNDRY

- Washer and dryer connections provided



SANTORINI COLLECTION - SINGLE-FAMILY HOMES

INCLUDED FEATURES

A NEW CONCEPT IN LIVING SPACE DESIGNED TO COMFORTABLY ACCOMMODATE A PRIVATE SUITE ADJACENT TO THE MAIN HOME. THESE NEW, INNOVATIVE FLOORPLANS ALLOW FAMILIES TO LIVE TOGETHER AND STILL HAVE THEIR OWN PRIVATE SPACE.

INNOVATIVE INTERIORS

- 18" x 18" ceramic tile in foyer, kitchenette, and laundry (Same as Main Home)
- Plush stain resistant carpeting with padding (Same as Main Home)
- Raised-panel interior doors
- Raised-panel bi-fold closet doors
- Colonial-style baseboards and door casing
- Elegant interior door hardware
- Textured walls & ceilings in designated areas
- Rocker-style switches throughout
- Category 5e structured wiring for voice in kitchenette, home run to central distribution panel
- RG6 shielded coaxial television cable in private suite living room and bedroom; home run to central distribution panel
- Pre-wired for ceiling fan in next gen suite
- Designer quality paint on all walls and ceilings
- Marble windowsills throughout
- Smoke and carbon monoxide detectors throughout

DESIGNER KITCHEN

- Kitchen cabinets with 36" uppers and brushed nickel hardware (Same as Main Home)
- Easy-care mica countertops with 6" backsplash (Same as Main Home)
- Stainless steel kitchen sink with decorative faucet and sprayer
- Quality stainless steel appliance package featuring:
 - Over-the-range built-in microwave with recirculating vent

INSIDE YOUR BATHS

- Vanity cabinets with cultured marble countertops, designer faucet, and brushed nickel hardware
- 12"x12" Ceramic tile in all bathroom floors and shower walls
- Exhaust fan
- Recessed LED downlighting

LAUNDRY

- Washer & Dryer connections provided



**EVERYTHING'S
INCLUDED®**

CORSICA

BY LENNAR

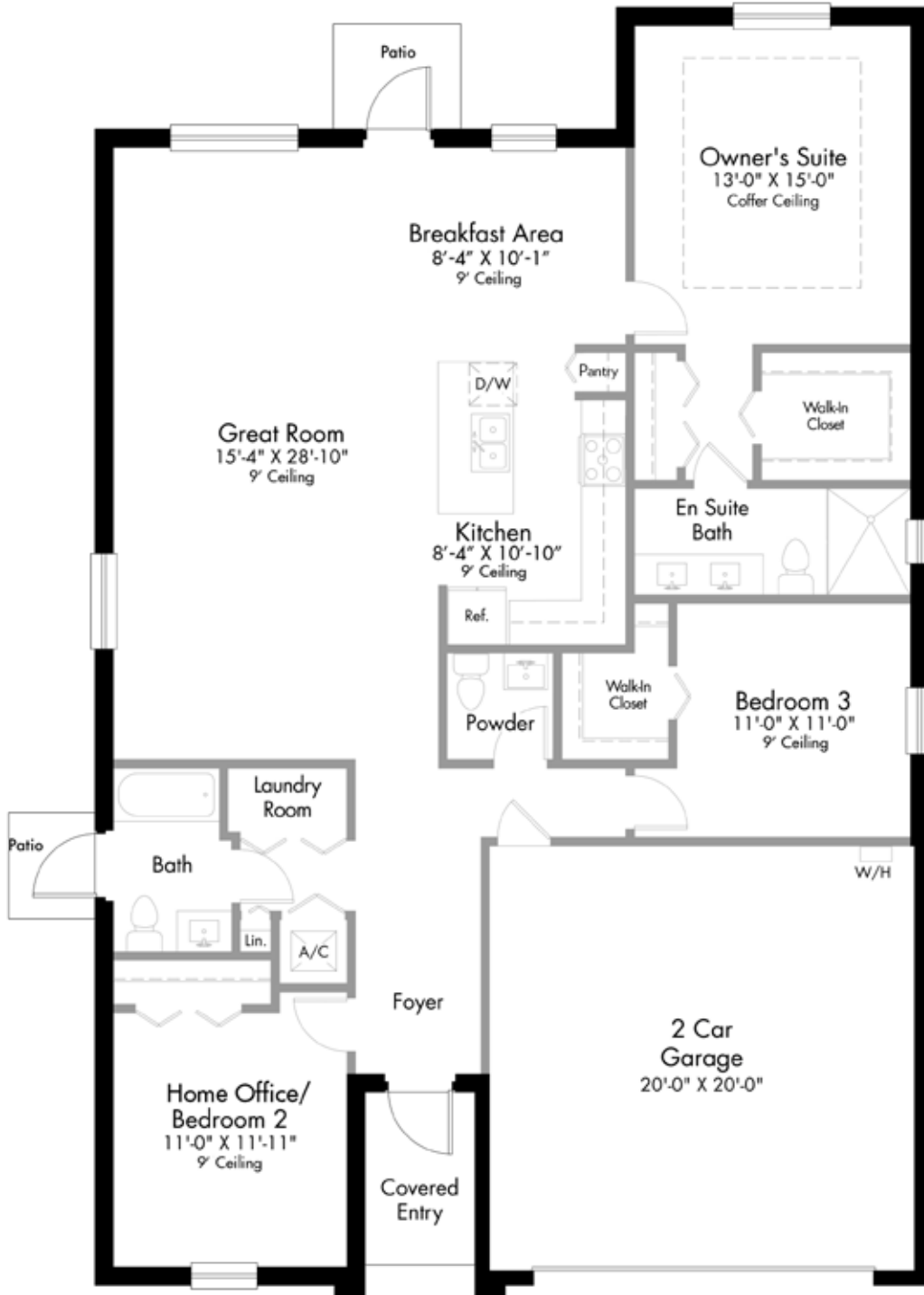


ARGENTO

SANTORINI COLLECTION - SINGLE-FAMILY HOMES

1-Story | 3 Bedrooms | 2.5 Baths | Great Room | Breakfast Area
 Covered Entry | 2-Car Garage

1,732	SQ FT	A/C AREA
432	SQ FT	2-CAR GARAGE
53	SQ FT	COVERED ENTRY
2,217	SQ FT	TOTAL



PRELIMINARY ARTIST'S CONCEPT



Plans and elevations are artist's renderings and may not accurately represent the actual condition of a home as constructed, and may contain options which are not standard on all models. Lennar reserves the right to make changes to these floor plans, specifications, dimensions and elevations without prior notice. Stated dimensions and square footage are approximate and should not be used as representation of the home's precise or actual size. Any statement, verbal or written, regarding "under air" or "finished area" or any other description or modifier of the square footage size of any home is a shorthand description of the manner in which the square footage was estimated and should not be construed to indicate certainty. See a Lennar new home consultant for further information. Garage sizes may vary from home to home and may not accommodate all vehicles. Copyright © 2023 Lennar Corporation. Lennar and the Lennar logo are registered service marks of Lennar Corporation and/or its subsidiaries. Sellers Broker: Lennar Homes, LLC. Construction License: CGC 062343. 11/21

CORSICA

BY LENNAR



CENTURI

SANTORINI COLLECTION - SINGLE-FAMILY HOMES

1-Story | 4 Bedrooms (optional 3 Bedrooms) | 3 Baths | Great Room
 Dining Room | Covered Entry | 2-Car Garage

1,827	SQ FT	A/C AREA
392	SQ FT	2-CAR GARAGE
25	SQ FT	COVERED ENTRY
<hr/>		
2,244	SQ FT	TOTAL



Optional Dining/Living Room

PRELIMINARY ARTIST'S CONCEPT



Plans and elevations are artist's renderings and may not accurately represent the actual condition of a home as constructed, and may contain options which are not standard on all models. Lennar reserves the right to make changes to these floor plans, specifications, dimensions and elevations without prior notice. Stated dimensions and square footage are approximate and should not be used as representation of the home's precise or actual size. Any statement, verbal or written, regarding "under air" or "finished area" or any other description or modifier of the square footage size of any home is a shorthand description of the manner in which the square footage was estimated and should not be construed to indicate certainty. See a Lennar new home consultant for further information. Garage sizes may vary from home to home and may not accommodate all vehicles. Copyright © 2023 Lennar Corporation. Lennar and the Lennar logo are registered service marks of Lennar Corporation and/or its subsidiaries. Sellers Broker: Lennar Homes, LLC. Construction License: CGC 062343. 03/23

CORSICA

BY LENNAR

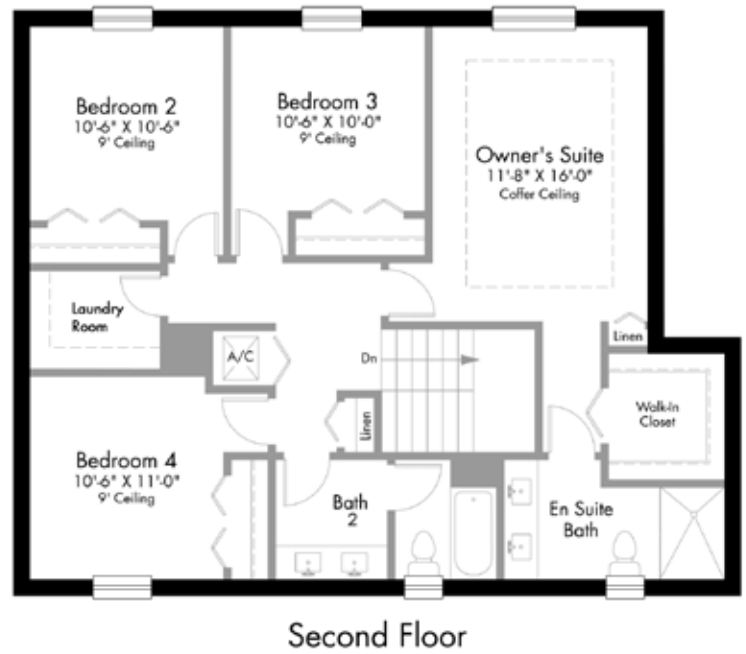


FLORENT

SANTORINI COLLECTION - SINGLE-FAMILY HOMES

2-Story | 4 Bedrooms | 2.5 Baths | Great Room | Breakfast Area
 Covered Entry | 2-Car Garage

2,183	SQ FT	A/C AREA
434	SQ FT	2-CAR GARAGE
60	SQ FT	COVERED ENTRY
2,677	SQ FT	TOTAL



PRELIMINARY ARTIST'S CONCEPT



Plans and elevations are artist's renderings and may not accurately represent the actual condition of a home as constructed, and may contain options which are not standard on all models. Lennar reserves the right to make changes to these floor plans, specifications, dimensions and elevations without prior notice. Stated dimensions and square footage are approximate and should not be used as representation of the home's precise or actual size. Any statement, verbal or written, regarding "under air" or "finished area" or any other description or modifier of the square footage size of any home is a shorthand description of the manner in which the square footage was estimated and should not be construed to indicate certainty. See a Lennar new home consultant for further information. Garage sizes may vary from home to home and may not accommodate all vehicles. Copyright © 2023 Lennar Corporation. Lennar and the Lennar logo are registered service marks of Lennar Corporation and/or its subsidiaries. Sellers Broker: Lennar Homes, LLC. Construction License: CGC 062343. 11/20

CORSICA

BY LENNAR

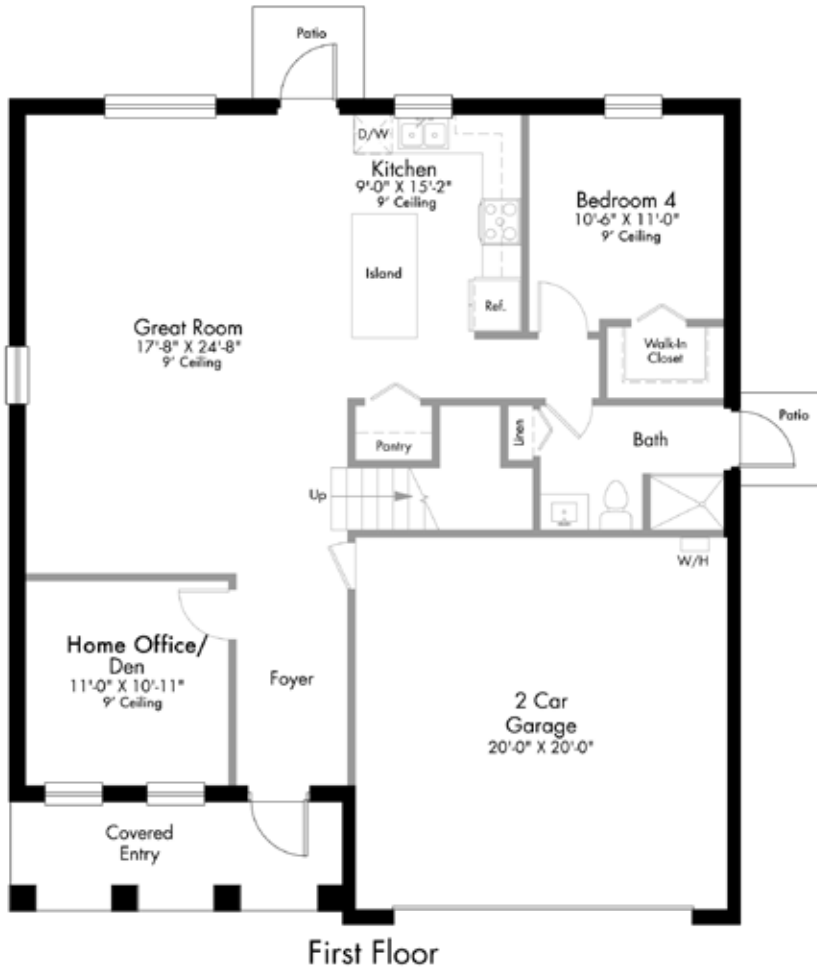


LUMIO

SANTORINI COLLECTION - SINGLE-FAMILY HOMES

2-Story | 4 Bedrooms | 3 Baths | Home Office/Den | Great Room
 Covered Entry | 2-Car Garage

2,439	SQ FT	A/C AREA
430	SQ FT	2-CAR GARAGE
56	SQ FT	COVERED ENTRY
2,925	SQ FT	TOTAL



PRELIMINARY ARTIST'S CONCEPT



Plans and elevations are artist's renderings and may not accurately represent the actual condition of a home as constructed, and may contain options which are not standard on all models. Lennar reserves the right to make changes to these floor plans, specifications, dimensions and elevations without prior notice. Stated dimensions and square footage are approximate and should not be used as representation of the home's precise or actual size. Any statement, verbal or written, regarding "under air" or "finished area" or any other description or modifier of the square footage size of any home is a shorthand description of the manner in which the square footage was estimated and should not be construed to indicate certainty. See a Lennar new home consultant for further information. Garage sizes may vary from home to home and may not accommodate all vehicles. Copyright © 2023 Lennar Corporation. Lennar and the Lennar logo are registered service marks of Lennar Corporation and/or its subsidiaries. Sellers Broker: Lennar Homes, LLC. Construction License: CGC 062343. 11/20

CORSICA

BY LENNAR

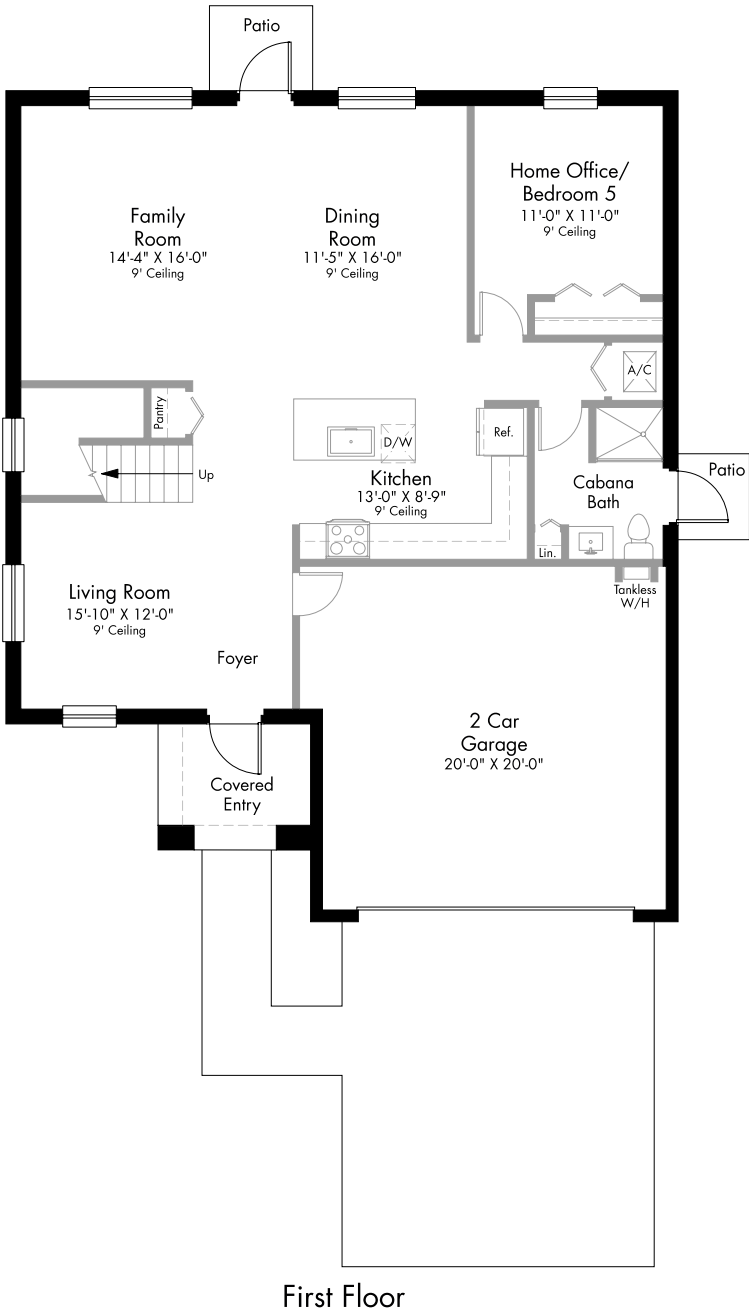


OLMETO


SANTORINI COLLECTION - SINGLE-FAMILY

2-Story | 5 Bedrooms | 3 Baths | Dining Room | Family Room
 Living Room | Covered Entry | 2-Car Garage

2,665	SQ FT	A/C AREA
445	SQ FT	2-CAR GARAGE
65	SQ FT	COVERED ENTRY
<hr/>		
3,175	SQ FT	TOTAL



PRELIMINARY ARTIST'S CONCEPT

 Plans and elevations are artist's renderings and may not accurately represent the actual condition of a home as constructed, and may contain options which are not standard on all models. Lennar reserves the right to make changes to these floor plans, specifications, dimensions and elevations without prior notice. Stated dimensions and square footage are approximate and should not be used as representation of the home's precise or actual size. Any statement, verbal or written, regarding "under air" or "finished area" or any other description or modifier of the square footage size of any home is a shorthand description of the manner in which the square footage was estimated and should not be construed to indicate certainty. See a Lennar new home consultant for further information. Garage sizes may vary from home to home and may not accommodate all vehicles. Copyright © 2023 Lennar Corporation. Lennar and the Lennar logo are registered service marks of Lennar Corporation and/or its subsidiaries. Sellers Broker: Lennar Homes, LLC. Construction License: CGC 062343. 04/23



CORSICA

BY LENNAR



PIANI

SANTORINI COLLECTION - SINGLE-FAMILY HOMES

Main Home:

2-Story | 4 Bedrooms | 2.5 Baths | Family Room | Dining Room
Breakfast Area | Covered Entry | 2-Car Garage

2,987 SQ FT A/C AREA

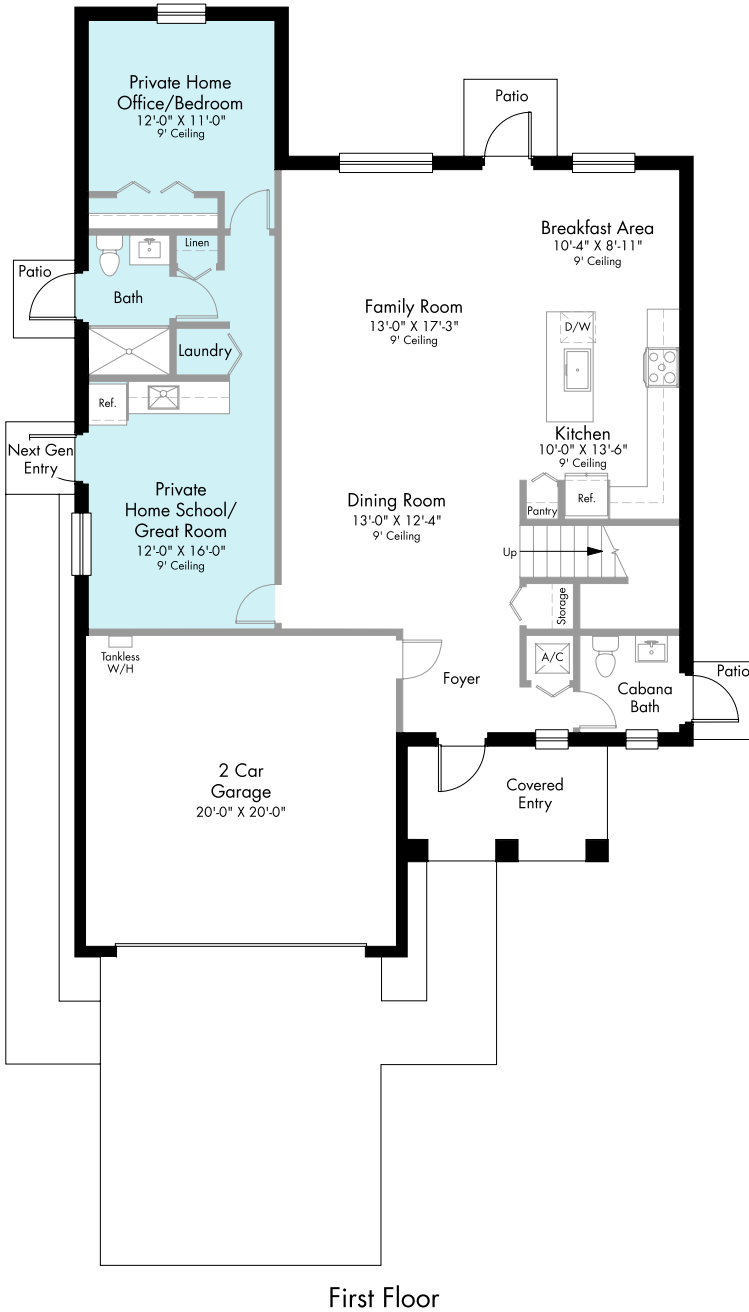
434 SQ FT 2-CAR GARAGE

96 SQ FT COVERED ENTRY

3,517 SQ FT TOTAL

Next Gen Suite:

Private Living Area | Private Great Room/Homeschool
Bedroom/Home Office | Kitchenette | Private Entry



PRELIMINARY ARTIST'S CONCEPT



Plans and elevations are artist's renderings and may not accurately represent the actual condition of a home as constructed, and may contain options which are not standard on all models. Lennar reserves the right to make changes to these floor plans, specifications, dimensions and elevations without prior notice. Stated dimensions and square footage are approximate and should not be used as representation of the home's precise or actual size. Any statement, verbal or written, regarding "under air" or "finished area" or any other description or modifier of the square footage size of any home is a shorthand description of the manner in which the square footage was estimated and should not be construed to indicate certainty. See a Lennar new home consultant for further information. Garage sizes may vary from home to home and may not accommodate all vehicles. Copyright © 2023 Lennar Corporation. Lennar and the Lennar logo are registered service marks of Lennar Corporation and/or its subsidiaries. Sellers Broker: Lennar Homes, LLC. Construction License: CGC 062343. 03/23

CORSICA

B Y L E N N A R

PRELIMINARY
OVERALL COMMUNITY SITE PLAN

LENNAR[®]



PRELIMINARY ARTIST'S CONCEPT. MAP IS NOT TO SCALE



Site plans and community maps are conceptual in nature and are merely an artist's rendition. These maps are solely for illustrative purposes and should never be relied upon. The past, present, future or proposed roads, easements, land uses, conditions, plat maps, lot sizes or layouts, zoning utilities, drainage, land conditions or development of any type whatsoever, whether reflected on the site plan or map, or whether outside the boundaries of the site plan or map, may not be shown or may be incomplete or inaccurate. The past, present, future or proposed roads, easements, land uses, conditions, plat maps, lot sizes or layouts, zoning utilities, drainage, land conditions or development of any type may or may not change in the future. It is not uncommon that any of the foregoing can change without notice to you. You should never rely on the accuracy of this map in making decisions relative to purchasing any property. We reserve the right to make changes at any time without notice. Map not to scale. Copyright © 2023 Lennar Corporation. All rights reserved. Lennar is a registered service mark or service mark of Lennar Corporation and/or its subsidiaries. Sellers Broker: Lennar Homes, LLC. Construction License: CGC 062343. 11/20

LENNAR®

Smart home technology included in this community



Connectivity Features:

Legrand On-Q 30" RF Transparent Structured Media Enclosure

Ring Alarm Security Kit - Base Station¹

Ring Alarm Security Kit - Ring Alarm Keypad¹

Ring Alarm Security Kit - Ring Alarm Motion Detector¹

Ring Alarm Security Kit - Ring Alarm Smoke and CO Listener¹

Ring Alarm Security Kit - Ring Alarm Window and Door Contact Sensor¹

Ring Video Doorbell Pro

Honeywell Home T6 Pro Z-Wave - smart thermostat

Schlage Encode™ Smart WiFi Deadbolt

LENNAR®

¹Once your free 30-day trial is over from your activation device, sign up for Ring Protect. Ring Protect is a comprehensive subscription service that lets you review, share and save every video and photo captured by your Ring device, opt-in to 24/7 professional monitoring with cellular backup for Ring Alarm, and more. To learn more about the Ring Protect plans and view pricing, visit <https://shop.ring.com/pages/protect-plans>. Ring Alarm professional monitoring service is available only within the U.S. (all 50 states, but not any U.S. territories) and in Canada (excluding Quebec). Ring does not own its professional monitoring center, but works with a leader in the industry to provide this service.

Features, amenities, floor plans, elevations and designs vary and are subject to changes or substitution without notice. Items shown are artist's renderings and may contain options that are not standard on all models or not included in the purchase price. Availability may vary. Lennar reserves the right to substitute with a device of equal or better quality. Select features and/or services may require additional fees and/or subscriptions that may change and may be provided to a third party. Lennar does not guarantee any equipment or services provided by Ring, Schlage, Honeywell Home by Resideo, or other third parties. The description of product is subject to a limited by the terms and conditions, privacy policies, limited warranties, and additional product information, available on <https://ring.com>; <https://www.schlage.com/en/home/smart-locks/encolde.html>; <https://www.honeywellhome.com/us/en>. Buyers is solely responsible for providing wifi internet connectivity, cellular services, and electric power needed to operate products and utilize any associated apps; monitoring any alerts; and, configuring all security features. Lennar does not warrant or represent that any network or device is secure or can prevent all privacy intrusions, malware, or cyber-attacks, even when correctly configured. All product and/or company names are trademarks TM or registered trademarks ® of their respective owners, and use of these marks does not imply any sponsorship, endorsement, support, or affiliation between the trademark owners and Lennar. This is not an offer in states where prior registration is required. Void where prohibited by law. Copyright © 2023 Lennar Corporation. Lennar and the Lennar logo are U.S. registered service marks or service marks of Lennar Corporation and/or its subsidiaries. Arizona - Lennar Sales Corp.; HSP Arizona, Inc. ROC 242267B-2; ROC 138431B; ROC 144869A; Lennar Arizona Construction, Inc. ROC 228129B; Lennar Arizona, Inc. d/b/a Lennar Homes ROC 232731B; Lennar Communities Development, Inc. ROC 137295KA / California - CalAtlantic Group, Inc. (Responsible Broker: Joanna Duke) #02058246; BMR Construction, Inc. 830955; Lennar Sales Corp. (Responsible Broker: Joanna Duke) #01252753; CalAtlantic Group, Inc. 1037780; Lennar Communities, Inc. 66241; Lennar Homes of California, Inc. 728102 / Florida - Lennar Realty, Inc.; Lennar Homes, LLC CBC038894; CGC062343; CGC1518166; CBC-1257529; CGC1523282; CBC1260831; CGC1526578; CBC051237; Standard Pacific of Florida GP, Inc. CGC1506052; CGC1517342, U.S. Home Corporation CGC1518911; WCI Communities, LLC CGC031523 / Maryland - CalAtlantic Group, Inc. MHBR No. 128; U.S. Home Corporation MHBR No 316 / Minnesota - Lennar Sales Corp.; CalAtlantic Group, Inc. BC7366565; BC700385; U.S. Home Corporations BC00143 / Nevada - Lennar Sales Corp.; Greystone Nevada, LLC 48844; Ryland Homes Nevada, LLC; Lennar Reno, LLC 64226; Ryland Homes Nevada, LLC 56652 / New Jersey - Lennar Sales Corp. / North Carolina - Lennar Sales Corp. / Oregon - Lennar Sales Corp. #201206464; Lennar Northwest, Inc. CCB #195307 / Pennsylvania - Lennar Sales Corp. / South Carolina - Lennar Carolinas, LLC / Tennessee - Lennar Sales Corp. ph. 615-465-4328 / Utah - Lennar Homes of Utah, Inc. / Washington - Lennar Sales Corp.; CalAtlantic Homes of Washington, Inc. CALATHW836LR; Lennar Northwest, Inc. LENNAN1893QG / West Virginia - US Home Corporation d/b/a Lennar: #WV060106. Date 12/22.



Everything's Included® in your new Lennar® dream home



Peace of mind when you're home or away.

- **Ring Alarm Pro Security System** - Receive notifications when a contact sensor, motion detector, or any part of your alarm system is triggered. Plus, monitor on your own or let Ring do it for you with 24/7 professional monitoring (subscription required).¹
- **Ring Alarm Smoke & CO Listener** - Get real-time mobile notifications whenever a siren sounds from a nearby smoke or CO alarm in your home, to stay ahead of smoke and carbon monoxide.
- **Honeywell Home T6 Pro Smart Thermostat** - Save on energy costs whether you are home or away, and control the heat or A/C from your phone. Create a custom schedule to optimize your energy savings on the device itself.

Answer your front door from anywhere.

- **Ring Video Doorbell Pro** - See, hear, and speak to anyone who's at your front door from anywhere, and receive real-time notifications when visitors trigger the built-in sensors or press your doorbell. Plus, with color night vision, HDR, and sharp contrast, you'll see it all, even in the dark.
- **Schlage Encode™ Smart Wifi Deadbolt Lock** - Lock and unlock your door and give access to friends, family, and people you trust, from anywhere.

Safer neighborhoods, together.

- **Ring Neighbors app** - Know and report what's happening in your community.
- **Real-time neighborhood smart alerts** - Stay connected to your community with real-time crime and safety alerts from your neighbors and local law enforcement.

¹Once your free 30-day trial is over from activation on your device, sign up for Ring Protect. Ring Protect is a comprehensive subscription service that lets you review, share and save every video and photo captured by your Ring device, opt-in to 24/7 professional monitoring with cellular backup for Ring Alarm, and more. To learn more about the Ring Protect plans and view pricing, visit <https://shop.ring.com/pages/protect-plans>. Ring Alarm professional monitoring service is available only within the U.S. (all 50 states, but not any U.S. territories) and in Canada (excluding Quebec). Ring does not own its professional monitoring center, but works with a leader in the industry to provide this service.

Please see your New Home Consultant and/or home purchase agreement for actual features designated as an Everything's Included feature. Lennar reserves the right to substitute with a device of equal or better quality. Select features and/or services may require additional fees and/or subscriptions that may change and may be provided by a third party. Lennar does not guarantee any equipment or services provided by Ring, Schlage, Honeywell Home by Resideo, or other third parties. The description of products is subject to and limited by the terms and conditions, privacy policies, limited warranties, and additional product information, available on <https://ring.com/>; <https://www.schlage.com/en/home/smart-locks/encode.html>; <https://www.honeywellhome.com/us/en/>. Buyer is solely responsible for providing wifi internet connectivity, cellular services, and electric power needed to operate the products and utilize any associated apps; monitoring any alerts; and, configuring all security features. Lennar does not warrant or represent that any network or device is secure or can prevent all privacy intrusions, malware, or cyber-attacks, even when correctly configured. All product and/or company names are trademarks TM or registered trademarks ® of their respective owners, and use of these marks does not imply any sponsorship, endorsement, support, or affiliation between the trademark owners and Lennar. This is not an offer in states where prior registration is required. Void where prohibited by law. Copyright © 2022 Lennar Corporation. Lennar, the Lennar logo, Everything's Included and the Everything's Included logo are U.S. registered service marks or service marks of Lennar Corporation and/or its subsidiaries. Arizona - Lennar Sales Corp.; HSP Arizona, Inc. ROC 242267B-2; ROC 138431B; ROC 144869A; Lennar Arizona Construction, Inc. ROC 228129B; Lennar Arizona, Inc. d/b/a Lennar Homes ROC 232731B; Lennar Communities Development, Inc. ROC 137295KA / California - CalAtlantic Group, Inc. (Responsible Broker: Joanna Duke) #02058246; BMR Construction, Inc. 830955; Lennar Sales Corp. (Responsible Broker: Joanna Duke) #01252753; CalAtlantic Group, Inc. 1037780; Lennar Communities, Inc. 66241; Lennar Homes of California, Inc. 728102 / Florida - Lennar Realty, Inc.; Lennar Homes, LLC CBC038894; OGC062343, CGC1518166, CBC1257529, CGC1523282, CBC1260831, CGC1526578, CBC051237; Standard Pacific of Florida GP, Inc. CGC1506052, CGC1517342; U.S. Home Corporation GGC1518911; WCI Communities, LLC CGC031523 / Maryland - CalAtlantic Group, Inc. MHBR No. 128; U.S. Home Corporation MHBR No. 316 / Minnesota - Lennar Sales Corp.; CalAtlantic Group, Inc. BC736565; BC700385; U.S. Home Corporation BC001413 / Nevada - Lennar Sales Corp.; Greystone Nevada, LLC 48844; Ryland Homes Nevada, LLC; Lennar Reno, LLC 64226; Ryland Homes Nevada, LLC 56652 / New Jersey - Lennar Sales Corp. / North Carolina - Lennar Sales Corp. / Oregon - Lennar Sales Corp. #201206464; Lennar Northwest, Inc. CCB #195307 / Pennsylvania - Lennar Sales Corp. / South Carolina - Lennar Carolinas, LLC / Tennessee - Lennar Sales Corp. ph. 615-465-4328 / Utah - Lennar Homes of Utah, Inc. / Washington - Lennar Sales Corp.; CalAtlantic Homes of Washington, Inc. CALATHW836LR; Lennar Northwest, Inc. LENNAN1893QG / West Virginia - US Home Corporation d/b/a Lennar; #WV060106. Date 11/22



NEW HOME. NEW ADVENTURES.

Corsica, will be a family-friendly Lennar community of new townhomes and single-family homes conveniently located on SW 248th Street & SW 119th Avenue in Miami-Dade. Residents will enjoy a fun lifestyle inside and outside of the community thanks to our strategic location between US1 and the South FL Turnpike. Enjoy easy access to excellent schools, world-class dining and shopping, entertainment venues, and more! Lovers of watersports and outdoor recreation will appreciate living just four miles from Blackpoint Marina and the lush mangrove preserves along Biscayne Bay. Adventure awaits you and your family at Corsica.



CONCEPTUAL PHOTO



CONCEPTUAL PHOTO



CONCEPTUAL PHOTO



 Schools

- Summerville Advantage Academy (0.8mi)
- Goulds Elementary School (1.7mi)
- Palm Glades Preparatory Academy (2.3 mi)
- Bayside Environmental, LLC (2.7mi)
- Miami Douglas Macarthur South Senior High School (3.6mi)
- Naranja Elementary School (3.6mi)
- Gulfstream Elementary School (4.9mi)
- Dr. Edward L. Whigham Elementary School (5.4mi)
- Mater Academy Bay (5.4 mi)
- Cutler Bay Senior High School (5.7mi)
- Keys Gate Charter High School (10.0mi)

 Shopping

- Publix Super Market at Promenade at Silver Palm (1.9mi)
- Walmart Supercenter (3.0mi)
- Southland Mall (4.1mi)
- ALDI (4.4mi)
- Homestead Pavilion (6.9mi)
- BrandsMart USA (8.1mi)
- Florida Keys Outlet Marketplace (10.8mi)

 Government & Travel

- MDR Station 70 (0.7mi)
- United States Postal Service (2.4mi)
- Miami-Dade Police Department (3.6mi)
- South Dade Regional Library (3.7mi)

 Medical

- CVS (1.0mi)
- Silver Palms Dentistry (1.9mi)
- Walgreens (2.0mi)
- Doctor's Medical Center (3.5mi)
- Humane Society of Greater Miami South (3.8mi)
- MD Now Urgent Care (5.0mi)
- Jackson South Medical Center (9.7mi)

 Parks & Recreation

- South Miami-Dade Cultural Arts Center (3.4mi)
- Miami South BMX (3.6mi)
- Regal Southland Mall (4.1mi)
- Sky Zone Cutler Bay (5.5mi)
- Coral Castle (5.6mi)
- Monkey Jungle (5.6mi)
- Perrine Wayside Park (7.8mi)
- Homestead-Miami Speedway (8.2mi)
- Gold Coast Railroad Museum (9.6mi)
- Homestead Sports Complex (9.6mi)
- Palmetto Golf Course (9.7mi)
- Zoo Miami (9.7mi)

 Dining

- Little Caesars Pizza (1.0mi)
- Dunkin' (1.2mi)
- Pollo Tropical (1.9mi)
- Puerto Vallarta Mexican Seafood (2.3mi)
- Tea Room at Cauley Square (2.5mi)
- Black Point Ocean Grill (3.7mi)
- Cold Stone Creamery (5.1mi)
- Cubavana Cafe Restaurant (5.2mi)
- Keg South of Homestead (5.4mi)
- Shiver's BBQ (5.8mi)
- Krispy Kreme (6.8mi)



LENNAR®

As one of the nation's leading homebuilders since 1954, Lennar is listed on the New York Stock Exchange (LEN) and is now present in 26 states across the country.

We deliver superlative quality by harnessing our national purchasing power to increase the quality of building materials, while lowering costs to deliver value and quality. We offer a full range of services, including in-house mortgage, title and insurance companies, and focus on making our clients' home buying experience hassle-free and memorable.

Lennar's commitment to Quality, Value and Integrity is the underlying foundation upon which we were built. And today, with more than half a century of experience behind us and over 1 million homes built, this commitment continues to guide us forward.



EVERYTHING'S
INCLUDED®

CORSICA

BY LENNAR

LENNAR[®]