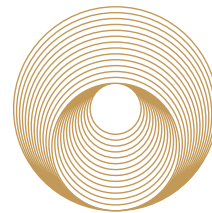


ORIGIN
RESIDENCES • BAY HARBOR

by artefacto

WELCOME TO SOPHISTICATED ISLAND LIVING

In collaboration with Artefacto, the purveyors of sophisticated
South Florida living, VDA Miami presents



O R I G I N
RESIDENCES • BAY HARBOR

by **artefacto**



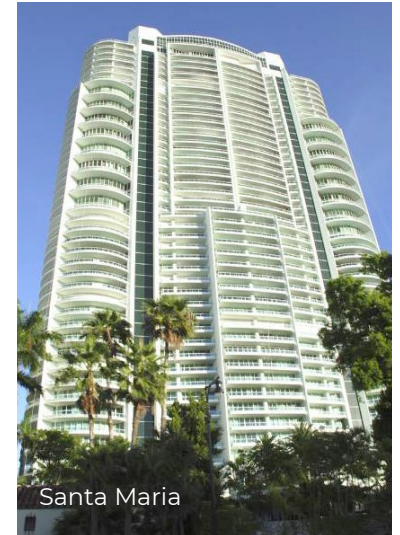
AN EXQUISITE COLLECTION OF 27 WATERFRONT LIMITED EDITION LUXURY RESIDENCES

Nestled on the western-most part of Bay Harbor Islands, this sanctuary boasts spectacular sunset views, peace, tranquility, and is close to everything.

This eight floor boutique building epitomizes island living in Miami.



DESIGNED BY THE RENOWNED ARCHITECTURAL FIRM REVUELTA ARCHITECTURE INTERNATIONAL



Santa Maria

Luis Revuelta began his career in 1972, he has since overseen the design and project coordination of some of the most complex and significant mixed-use, urban developments that not only enhance, but have defined the vertical beauty of Miami's skyline.

His philosophy is built upon the pillars of a steadfast commitment to providing clients with design quality and balance and the adherence to attention to visual detail; a philosophy that has been the cornerstone of Revuelta Architecture International's growth and success. His diverse range

of projects include single-family homes, high-rise residential properties, hotels & assembly facilities, office buildings and commercial, retail facilities, amongst others.

Luis summarizes the firm's vision with a simple and pragmatic statement: "The underlying philosophy behind our success has been our willingness to persevere in the pursuit of the architectural concepts and details we believe will make a project successful for our clients and their customers."





BUILDING FEATURES

- / 27 Unique Residences ranging from 2 bedroom to 4 bedroom
- / Panoramic rooftop pool with poolside summer kitchens and bar
- / Waterfront Aqua Club / Water Sports Storage Facility
- / Gym with state-of-the-art equipment
- / Owner's Lounge
- / Personalized services, 24 hour security and advanced technology
- / Designated self parking for all residences
- / Designated bicycle storage area
- / EV charging stations
- / FTTH (Fiber to the Home) for video and high speed internet
- / Storage units conveniently located on every residential floor
- / Dog run / park and pet wash station



BAY HARBOR THE ULTIMATE WATERFRONT LIFESTYLE



BAY HARBOR LIVING



Bal Harbour Shops

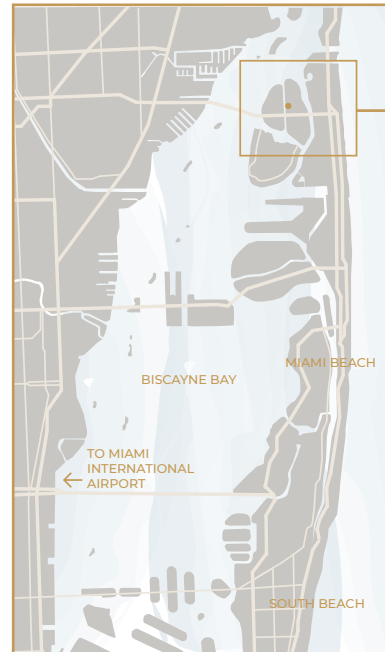


MIAMI BEACH



BAY HARBOR LIVING

- 1 / Origin Sales Lounge
- 2 / Rustiko
- 3 / Hillstone Restaurant
- 4 / Makoto
- 5 / Le Zoo
- 6 / Cafe on 3
- 7 / Atlantikos
- 8 / BH Burger Bar
- 9 / Balmoral Restaurant
- 10 / King David Cuisine
- 11 / Artisan Beach House
- 12 / Haulover Park
- 13 / The Ritz Carlton
- 14 / St Regis
- 15 / Pura Vida
- 16 / Meat Bar
- 17 / Foozo Artisan Pizza
- 18 / The Bistro
- 19 / The Palm Miami
- 20 / O'Lima Signature Cuisine
- 21 / Officer Scott Winters Park
- 22 / Bay Harbor Islands Branch Library
- 23 / Public School Ruth K,
- 24 / Indian Creek Country Club
- 25 / FIU Biscayne Campus
- 26 / Oleta River State Park
- 27 / Whole Foods Market
- 28 / Church by The Sea
- 29 / Young Israel of Bal Harbour
- 30 / Bal Harbor Kollel
- 31 / The Shul
- 32 / Artefacto Gallery Sales Center
- 33 / Bal Harbour Shops



artefacto

The Artefacto aesthetic is highly coveted by renowned architects and designers. Each of their pieces is crafted with utmost care and attention to detail, striving to create a bond between the home and its inhabitants. You can find luxurious yet warm textures and furnishings that feature a monochrome palette of neutral hues. One statement piece can draw together an entire room. To experience Artefacto for yourself, visit an Artefacto showroom in Aventura, Coral Gables or Doral.



OUR AWARD WINNING INTERIOR DESIGNER

The setting by the renowned interior designer Carla Guilhem, in collaboration with the firm ARTEFACTO, is one of the main reasons for the great appeal of ORIGIN. Guilhem's distinctive style, her ability to combine elements and her meticulous eye for detail, is appreciated in every corner of the settings, from common spaces to individual apartments. Guilhem's decoration becomes a reflection of the good taste and quality that characterize this exceptional residence.

Awards:

BOAT International

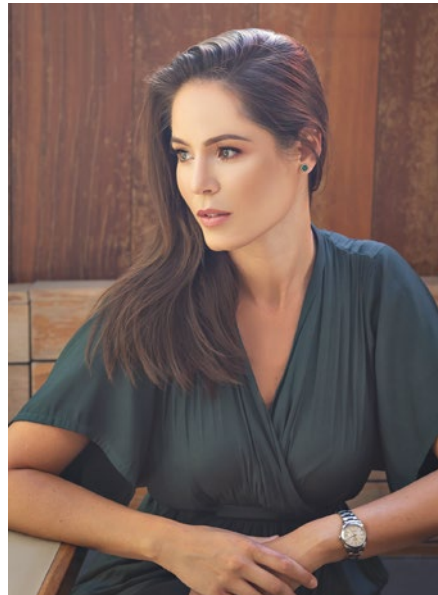
Best Interior Design (2023)

World Yachts Trophy

Best Custom Yacht (2022)

BOAT International

Judges' Commendation (2022)



CARLA GUILHEM
DESIGN

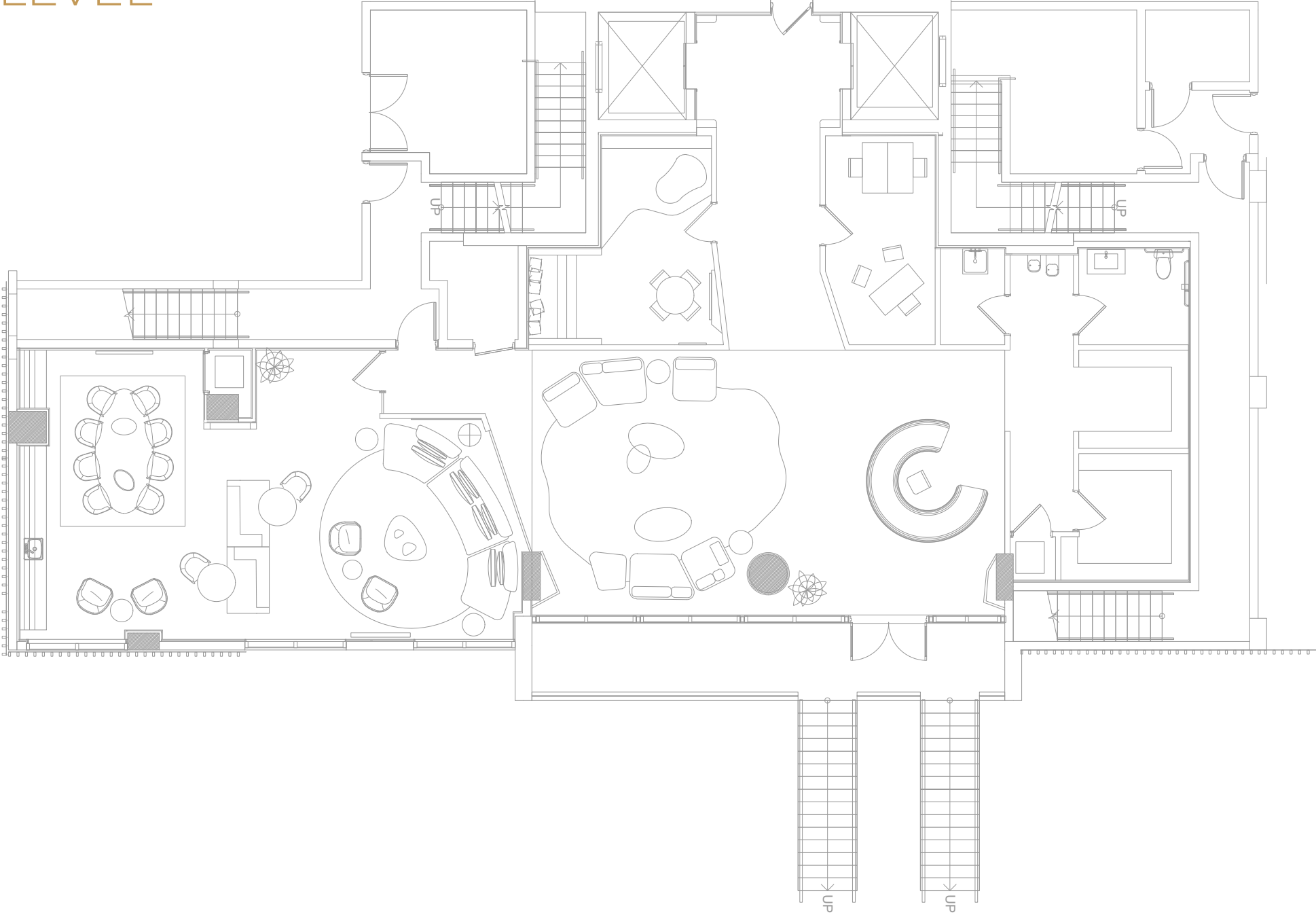
CLASSIC ELEGANCE FOR MODERN LIVING

Large plans with flexible layouts and unit sizes make this the perfect design for today's family and world travelers alike.

With floor to ceiling windows, water views, and a contemporary aesthetic that evokes classic elegance, the building and the residences are sophisticated yet comfortable.



LOBBY LEVEL



LOBBY INSPIRATION





LOBBY

ORIGIN
RESIDENCES - BAY HARBOR
artefacto

LINEN
GIORGIO ARMANI

BY ARTEFACTO
PROJECT PRESENTATION | 18
ORIGIN RESIDENCES - BAY HARBOR



ORIGIN
RESIDENCES - BAY HARBOUR
by artefacto



LOBBY

BY ARTEFACTO

PROJECT PRESENTATION | 20 |

ORIGIN RESIDENCES · BAY HARBOR

OWNERS LOUNGE INSPIRATION





OWNERS LOUNGE

BY ARTEFACTO

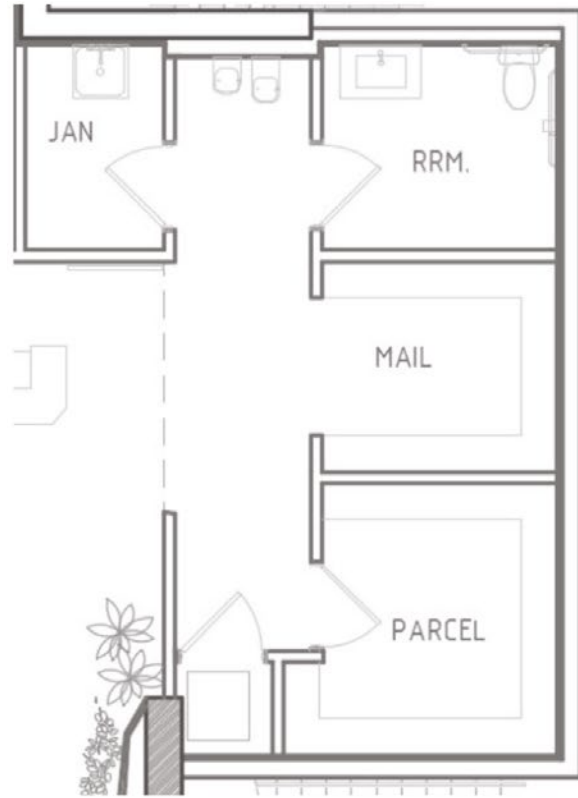
PROJECT PRESENTATION

ORIGIN RESIDENCES · BAY HARBOR



OWNERS LOUNGE

MAIL ROOM



KIDS ROOM

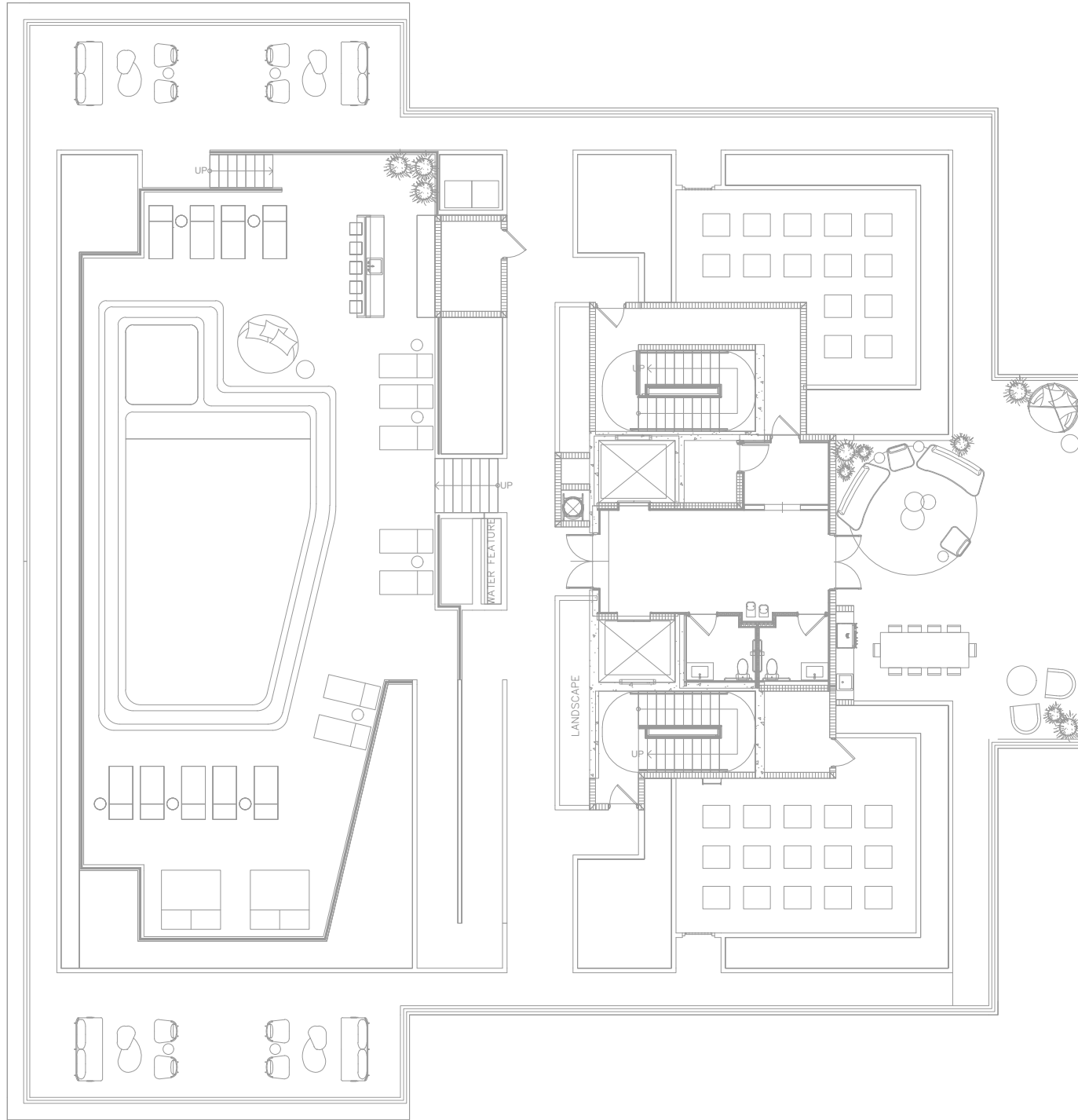


3RD FLOOR GYM



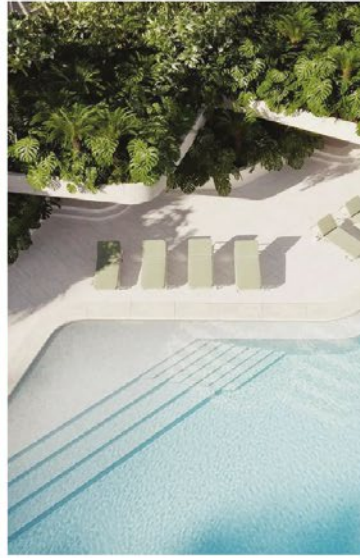
ROOF LEVEL

WEST



EAST

ROOFTOP INSPIRATION



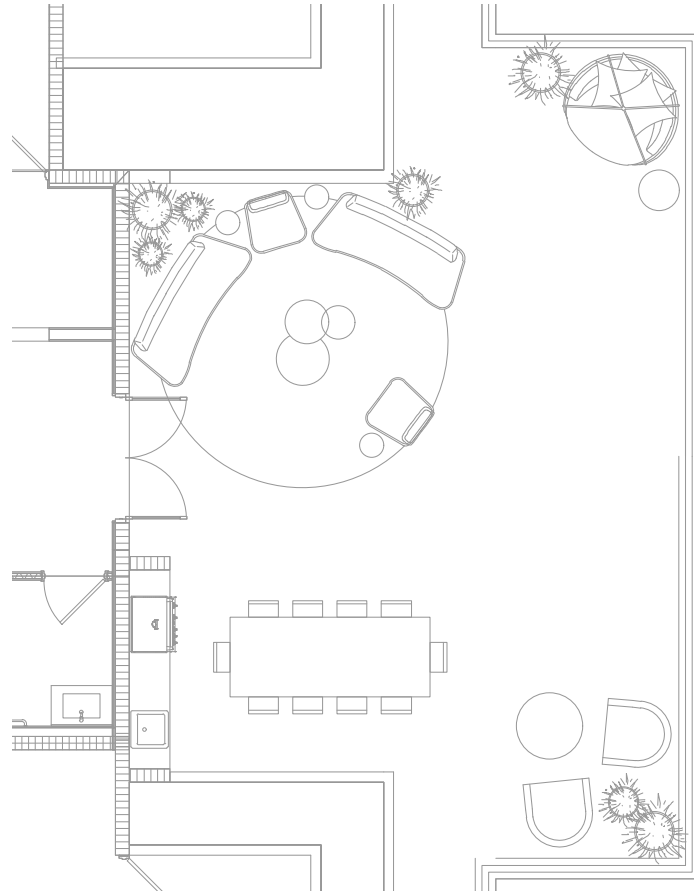


POOL DECK



POOL DECK

BBQ AREA INSPIRATION



Tile



Wooden slats



Pergola in Wood



Ceiling lights like photo



Tile wall for sofa Area



BBQ like photo
(Slats on wall, countertop & cabinet)



BBQ AREA

WATERFRONT AQUA CLUB WATER SPORTS STORAGE FACILITY



Dive into the waterfront living at Origin. Our Aqua Club provides a paddleboard and kayak storage station with a wash down facility so you can enjoy our greatest amenity - the pristine waters of the Intracoastal Waterways and canals year round.



PRIVATE MARINA PROPOSED

ORIGIN Residences is proposing to offer a Marina, pending city permitting and approvals. This will include the following features:

- / 10 Boat slips
- / Direct Atlantic Ocean access through Haulover inlet as well as direct access to Miami and Fort Lauderdale Intracoastal Waterways
- / Private waterfront cabanas
- / Water sports launch dock for kayaks and paddle boards

PET PARK FOR THE EXTENDED FAMILY

With our dog park and pet wash station,
your furry friends will have a space to run
freely.



DISCOVER YOUR DREAM HOME

RESIDENCES

2 Bedrooms / 2.5 Bath
1,367 sq.ft

2 Bedrooms + Den / 3.5 Bath
From 1,302 to 1,659 sq.ft.

3 Bedrooms / 3.5 Bath
From 1,491 to 1,549 sq.ft

3 Bedrooms + Den / 4 Bath
2,049 sq.ft

3 Bedrooms + Den / 4.5 Bath
2,187 sq.ft

4 Bedrooms / 4 Bath
From 2,049 to 2,135 sq.ft

4 Bedrooms + Den / 4.5 Bath
From 2,328 sq.ft

PH COLLECTION

2 Bedrooms + Den / 3.5 Bath
From 1,563 to 1,883 sq.ft

4 Bedrooms / 4.5 Bath
2,200 sq.ft

4 Bedrooms / 4.5 Bath
(5th bedroom model available)
2,200 sq.ft



WELCOME
HOME





RESIDENCE FEATURES

- / Floor-to-ceiling, impact-resistant sliding glass doors and windows
- / Energy - efficient air conditioning and heating system - Featuring Nest Thermostats
- / Expansive floor layouts with up to 9-foot grand ceiling heights
- / PH residences feature 11- foot ceilings
- / Fully-accessorized imported Italian kitchens with top-of-the-line Wolf & Sub-Zero appliances
- / Modern bathrooms and European cabinetry
- / Italian porcelain flooring throughout
- / Panoramic private balconies on every residence
- / Oversized walk-in closets
- / Front load full-size washer and dryer
- / FTTH (Fiber to the Home) for video and high-speed internet



WEST FACING RESIDENCES

UNIT 502





UNIT 502



UNIT 502

UNIT 603



UNIT 603





UNIT 603



UNIT 603



UNIT 603



UNIT 603

UNIT 603





**EAST FACING
RESIDENCES**

UNIT 406





UNIT 406

BY ARTEFACTO

PROJECT PRESENTATION 11.19.21

ORIGIN RESIDENCES - BAY HARBOR



UNIT 406

UNIT 406



UNIT 604



UNIT 604



UNIT 604



UNIT 604



UNIT 604



Oleta River State Park

Aventura Mall

NW VIEW



NW VIEW

BY ARTEFACTO

PROJECT PRESENTATION 6

ORIGIN RESIDENCES AT HARBOR

Indian Creek Country Club

Downtown Miami

MIA

SW VIEW





SW VIEW



SE VIEW

BY ARTEFACTO

OPPORTUNITY SELECTION

ORIGIN RESIDENCES BAY HARBOR

Sunny Isles

Bal Harbour Beaches

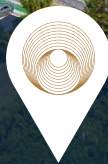
St Regis Hotel

Bal Harbour Shops

NE VIEW



NE VIEW







Sergio Guzmán & Mauricio Moya

VDA | MIAMI *Origin*

What began as a boutique project, with only 21 apartments in the commune of Ñuñoa, Santiago de Chile, would become the starting point of a successful career marked by innovation and a visionary spirit that, to this day, promotes each one of the ideas and projects of VDA.

With more than 22 years of experience in the real estate market in Chile, VDA has been building its history on the solid foundation of excellence throughout the country. The key to its success lies in constant and rapid learning, the ability to adapt and stay ahead of its competition and always maintain the highest quality standard in each product it launches on the market.

In this way, emblematic projects such as the Radisson La Dehesa and Radisson Concepción hotels established a standard thanks to the company's pioneering vision, by choosing innovative locations in sectors

with little development until then, outside of Santiago, the capital of Chile.

Thanks to this way of approaching the market, many VDA projects marked the path to follow for other developers in the industry. Some of those projects are:

- Hotel Radisson Petra, Concepción
- Hotel Radisson Petra La Dehesa, Santiago
- Edificio Plaza el Cobre, Rancagua
- Edificio Almar, Concón
- Edificio Rakun, Pucón
- Edificio Vista el Valle en La Dehesa, Santiago
- Edificio Coventry 21, Ñuñoa, Santiago
- Edificio Santa Rosa del Mar, Coquimbo
- Edificio Bio Bio Centro, Concepción

The history of VDA is marked by each of its projects, which have been a fundamental step on a path that continues towards new challenges and crosses borders.

“Bay Harbor is the best choice for our condo project, it is on the water, in a vibrant community close to everything Miami has to offer, that creates the perfect combination of urban and island living that beautifully connects you to the land, the air and the sea.”

Mauricio Moya

VDA PROJECTS

Edificio Almar Concón, V Región, Chile
Departamentos



Edificio Plaza El Cobre, Rancagua, Chile
Departamentos y oficinas



Edificio Santa Rosa del Mar, Coquimbo, Chile.
Departamentos



Edificio Bío Bío, Concepción, Chile
Oficinas



Edificio Rakün, Pucón, Chile
Departamentos



Edificio Vista El Valle, Santiago, Chile
Departamentos

artefacto



Paulo, Pietro, Albino and Bruno Bacchi

EXCELLENCE SPANNING THREE GENERATIONS

The word Artefacto is practically synonymous with high-end furnishings and home staging. More so, it decodes a lifestyle that is highly regarded amongst the biggest names in architecture and décor. Behind every accessory and piece of furniture is a carefully thought-out concept that aims to establish connections between the home and the owner.

This attention to detail began in 1976, when Albino Bacchi, patriarch, launched the brand with a collection made of renewable natural fiber pieces. Artefacto continues to combine technology and craftsmanship under the second generation, Paulo Bacchi, with quality, elegance and impeccable finishes that make the furniture and accessories true objects of desire. Paulo's twin sons, Pietro and Bruno, continue the family tradition of excellence into the third generation.

Located in Iperó, the countryside state of São Paulo, Artefacto's factory boasts a 750,000 squarefoot self-sufficient production system (without third-party intervention). The plant is responsible for developing, crafting and maintaining the demanding quality standard that makes the company the industry leader.

Adopting exclusively raw materials certified by agencies such as Ibama, the manufacturing process involves various stages, from the frames of the furniture to the upholstery and finishes, integrating manual work and technology according to the design and function of each piece.

The unique feature of Artefacto furniture is achieved by the union of modern and traditional, such as high-tech designs and custom-built pieces, hand-held tools and large manufacturing machinery.

CARLA GUILHEM

D E S I G N

Carla Guilhem Design is a creative interior design studio based in Miami with over a decade of experience in high-end projects. Led by creative director Carla Guilhem, who taps into her Brazilian heritage and academic studies at the Instituto Europeo di Design in Madrid, Spain, the studio has built a global reputation for creating uniquely creative, beautiful and yet functional spaces that reflect the unique needs and desires of its highly demanding clients.

Carla's keen eye for detail and her ability to create highly bespoke spaces made her a sought-after designer for superyachts. Her debut project Lady Lene won recognition at the BOAT International World Superyacht Awards 2022. Further, she was recognized as the Best Interior Designer during the 2023 Superyacht Design Festival. With a team of highly qualified professionals across architecture and interior design disciplines, Carla Guilhem Design is now considered one of the leading yacht interior design studios in the world.

Over the years, the studio has gained deep experience in designing luxury residences, residential condo developments, commercial, hospitality projects, and has worked on projects throughout the USA, Europe, and Latin America.



One Thousand Museum - Miami



Lady Lene 112 - Custom Superyacht



Beachclub 67 - Custom Superyacht

revuelta

architecture
international



Designed by renowned architectural firm, Revuelta Architecture International.

Revuelta Architecture International was founded with a commitment to provide our clients with quality designs balanced with sustainable and economically feasible solutions, delivered within stringent time schedules. This philosophy, over the past two decades, has been the cornerstone of the success of many of our projects. We have partnered with top local and national developers in the design and creation of some of South Florida's leading landmark residential, commercial, hospitality, automobile dealerships and mixed-use projects.



CERVERA®

REAL ESTATE • 1969

Leading
REAL ESTATE
COMPANIES
OF THE WORLD

LP
LUXURY
PORTFOLIO
INTERNATIONAL

A South Florida-based, family owned and operated real estate company responsible for exclusively representing and selling over 115 of South Florida's most prestigious condominiums, the most among any brokerage firm in South Florida. Backed by over 50 years of market expertise, Cervera has deep roots in the local community, and an international broker and buyer network built on five decades of trust. With a far reaching and unrivaled international network and decades on the ground, Cervera has cultivated unique and long-lasting relationships with developers, architects, investors, and real estate firms that are crucial to the success of their clients and partners. No other real estate firm in South Florida has the transformational impact, marketing reach, and decades of proven sales results.

LOFTY Brickell



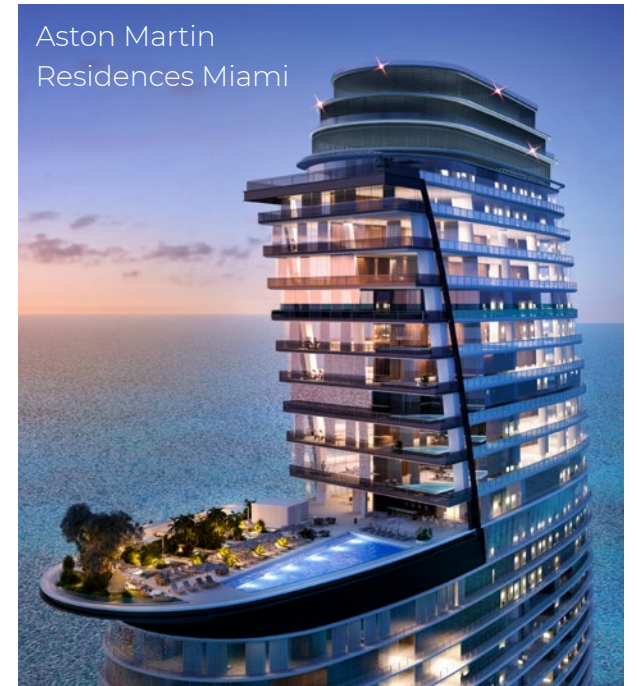
Vita at Grove Isle



The Residences at 1428 Brickell



Aston Martin
Residences Miami





RESIDENCES

A collection of
2, 3 and 4 bedroom
residences

2 BEDROOM COLLECTION

PH LEVEL 7

UNIT 702

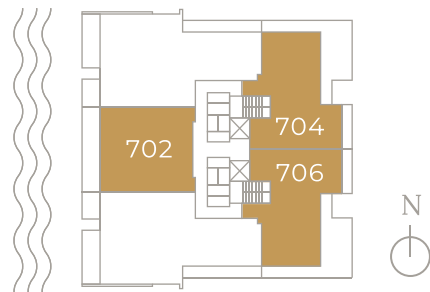
2 Bedrooms + Den / 3.5 Bath
1,883 sq. ft. / 174 m²

UNIT 704

2 Bedrooms + Den / 3.5 Bath
1,939 sq. ft. / 180 m²

UNIT 706

2 Bedrooms + Den / 3.5 Bath
1,939 sq. ft. / 180 m²



LEVEL 6

UNIT 602

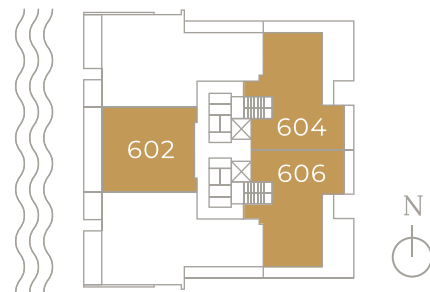
2 Bedrooms + Den / 3.5 Bath
1,883 sq. ft. / 175 m²

UNIT 604

2 Bedrooms + Den / 3.5 Bath
2,311 sq.ft / 214 m²

UNIT 606

2 Bedrooms + Den / 3.5 Bath
2,311 sq.ft / 214 m²



LEVEL 5

UNIT 504

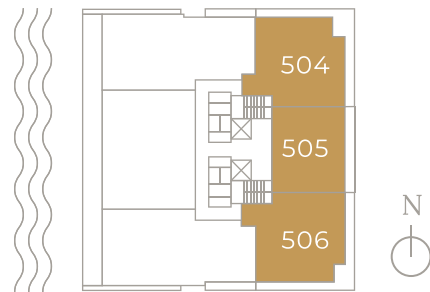
2 Bedrooms / 2.5 Bath
1,753 sq. ft. / 162 m²

UNIT 505

2 Bedrooms + Den / 3.5 Bath
1,437 sq. ft. / 133 m²

UNIT 506

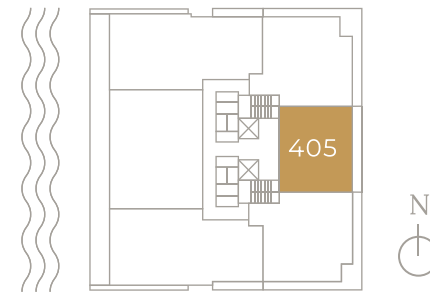
2 Bedrooms / 2.5 Bath
1,753 sq. ft. / 162 m²



LEVEL 4

UNIT 405

2 Bedrooms + Den / 3.5 Bath
1,666 sq. ft. / 154 m²



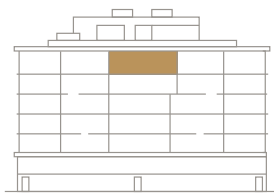
PH LEVEL 7

UNIT 702

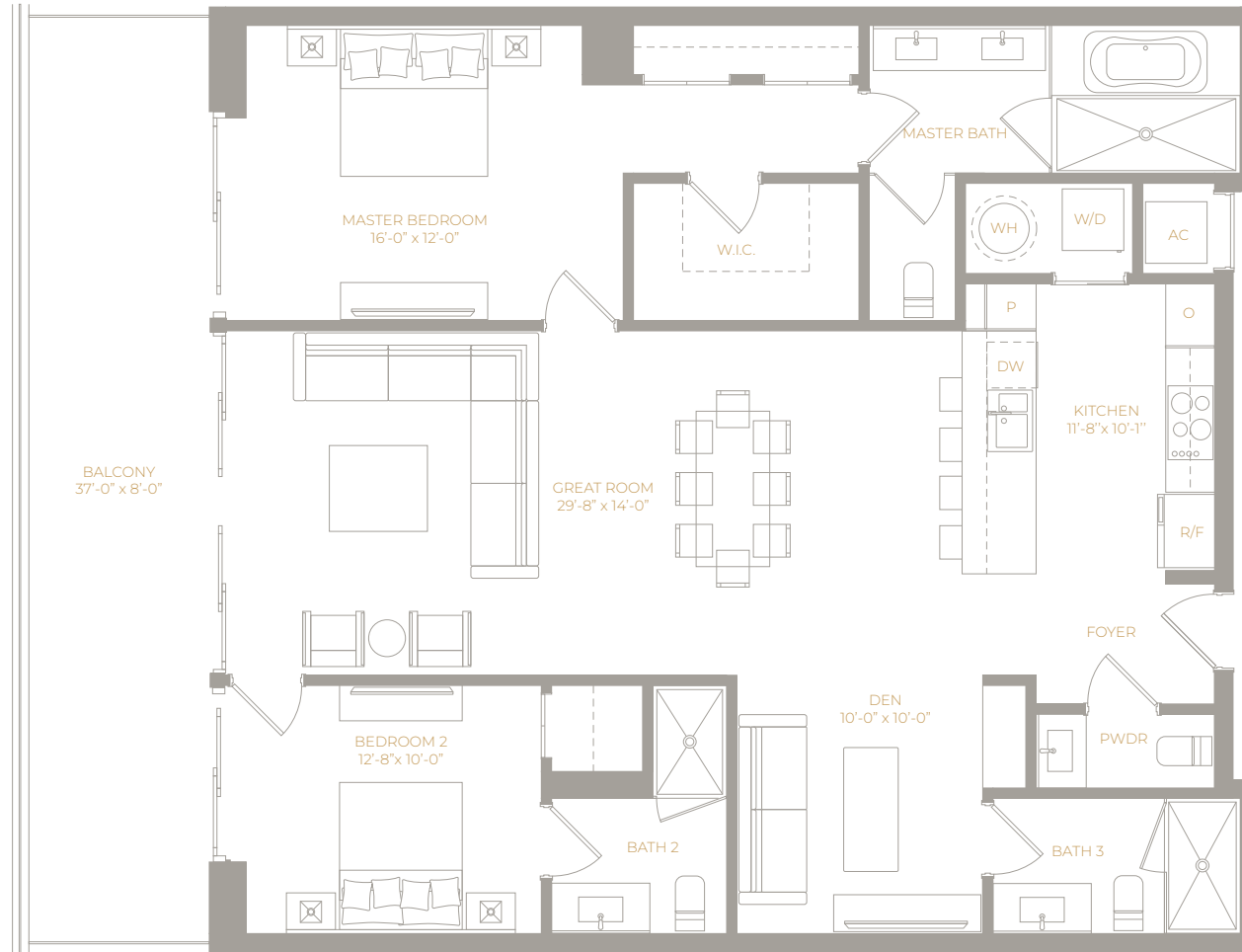
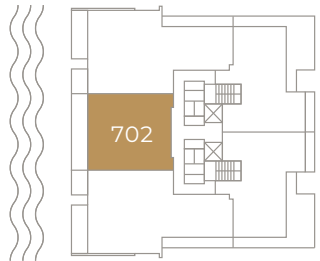
2 Bedrooms + Den / 3.5 Bath

AREA

Interior:
1,582 sq. ft. / 147 m²
Exterior:
301 sq. ft. / 27 m²
TOTAL:
1,883 sq. ft. / 174 m²



WEST FACADE



PH LEVEL 7

UNIT 704

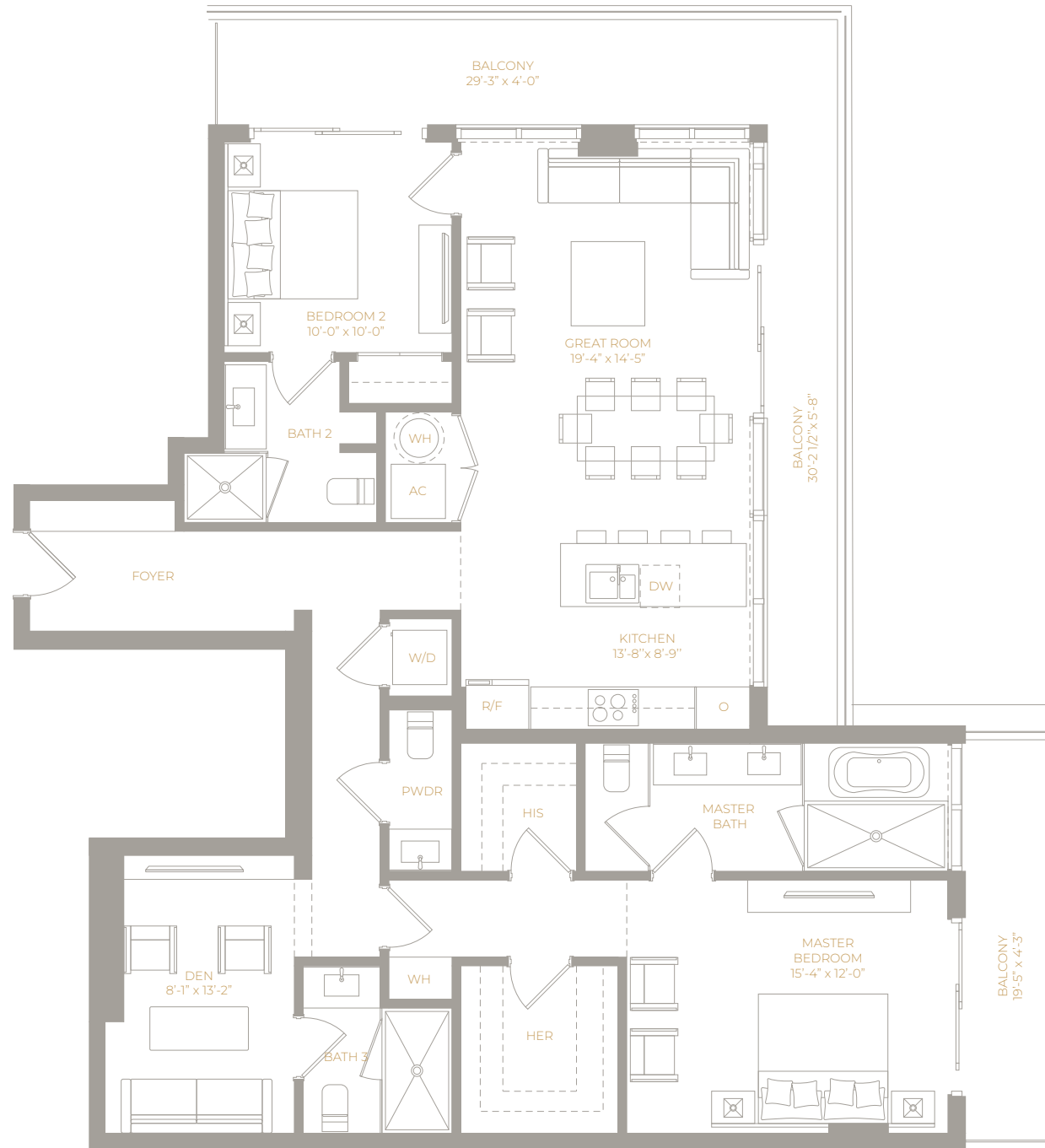
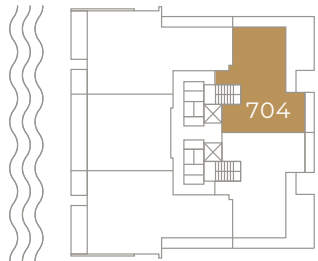
2 Bedrooms + Den / 3.5 Bath

AREA

Interior:
1,563 sq. ft. / 145 m²
Exterior:
376 sq. ft. / 34 m²
TOTAL: 1,939 sq. ft. / 180 m²



EAST FACADE



PH LEVEL 7

UNIT 706

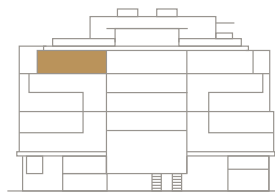
2 Bedrooms + Den / 3.5 Bath

AREA

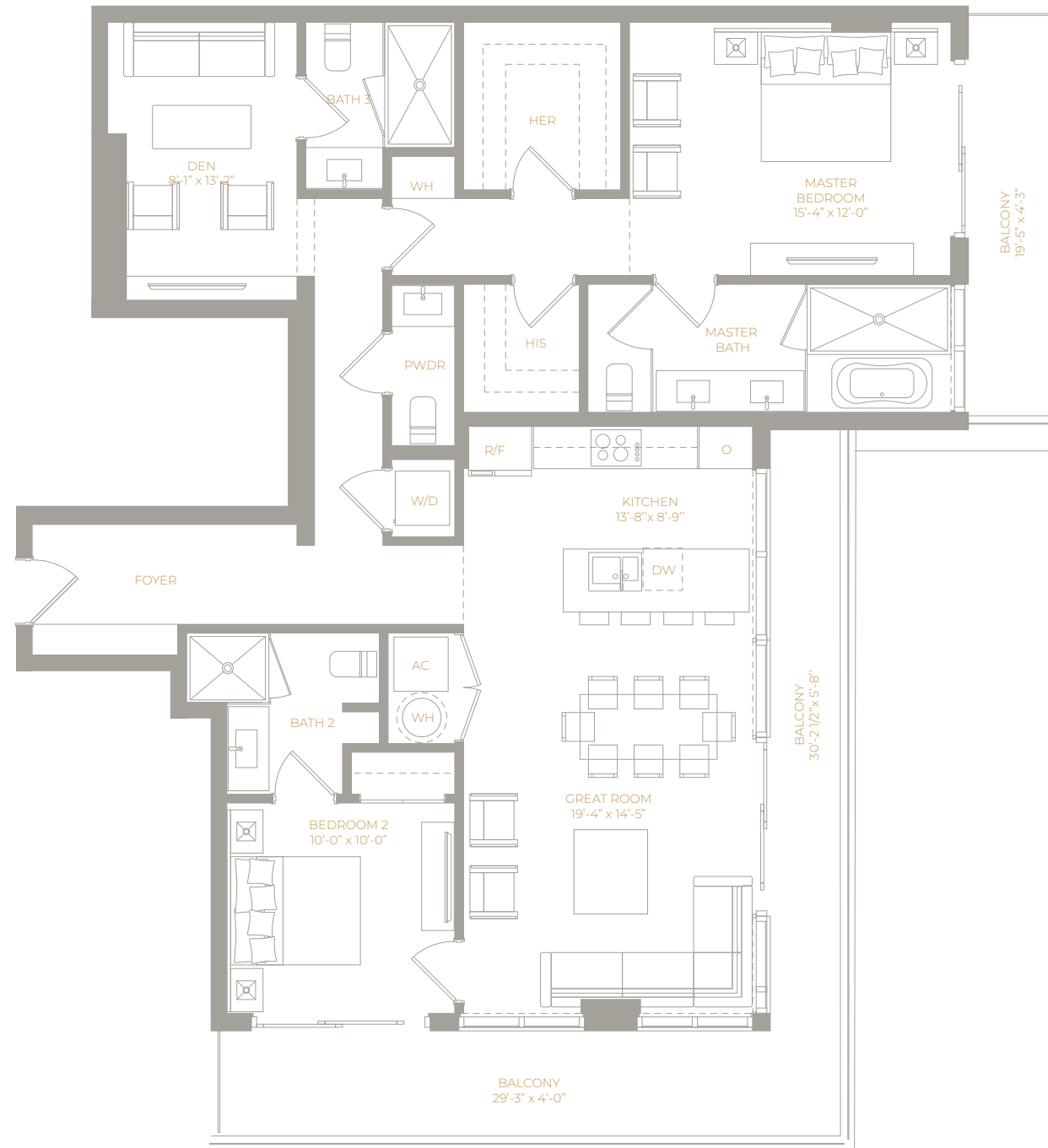
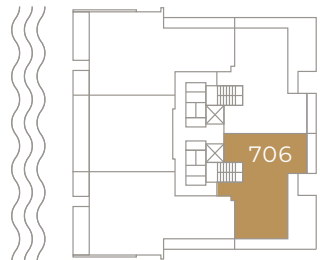
Interior:
1,563 sq. ft. / 145 m²

Exterior:
376 sq. ft. / 34 m²

TOTAL: 1,939 sq. ft. / 180 m²



EAST FACADE



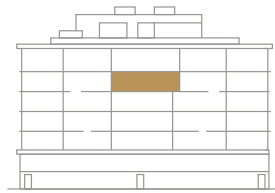
LEVEL 6

UNIT 602

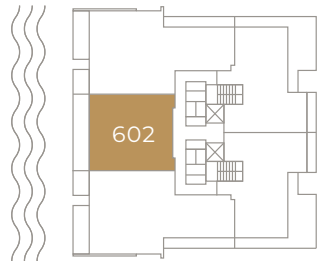
2 Bedrooms + Den / 3.5 Bath

AREA

Interior:
1,582 sq. ft. / 147 m²
Exterior:
301 sq. ft. / 28 m²
TOTAL:
1,883 sq. ft. / 175 m²



WEST FACADE



LEVEL 6

UNIT 604

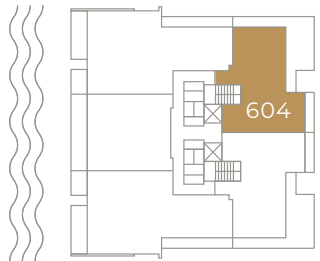
2 Bedrooms + Den / 3.5 Bath

AREA

Interior:
1,659 sq. ft. / 154 m²
Exterior:
652 sq. ft. / 60 m²
TOTAL:
2,311 sq. ft. / 214 m²



EAST FACADE



LEVEL 6

UNIT 606

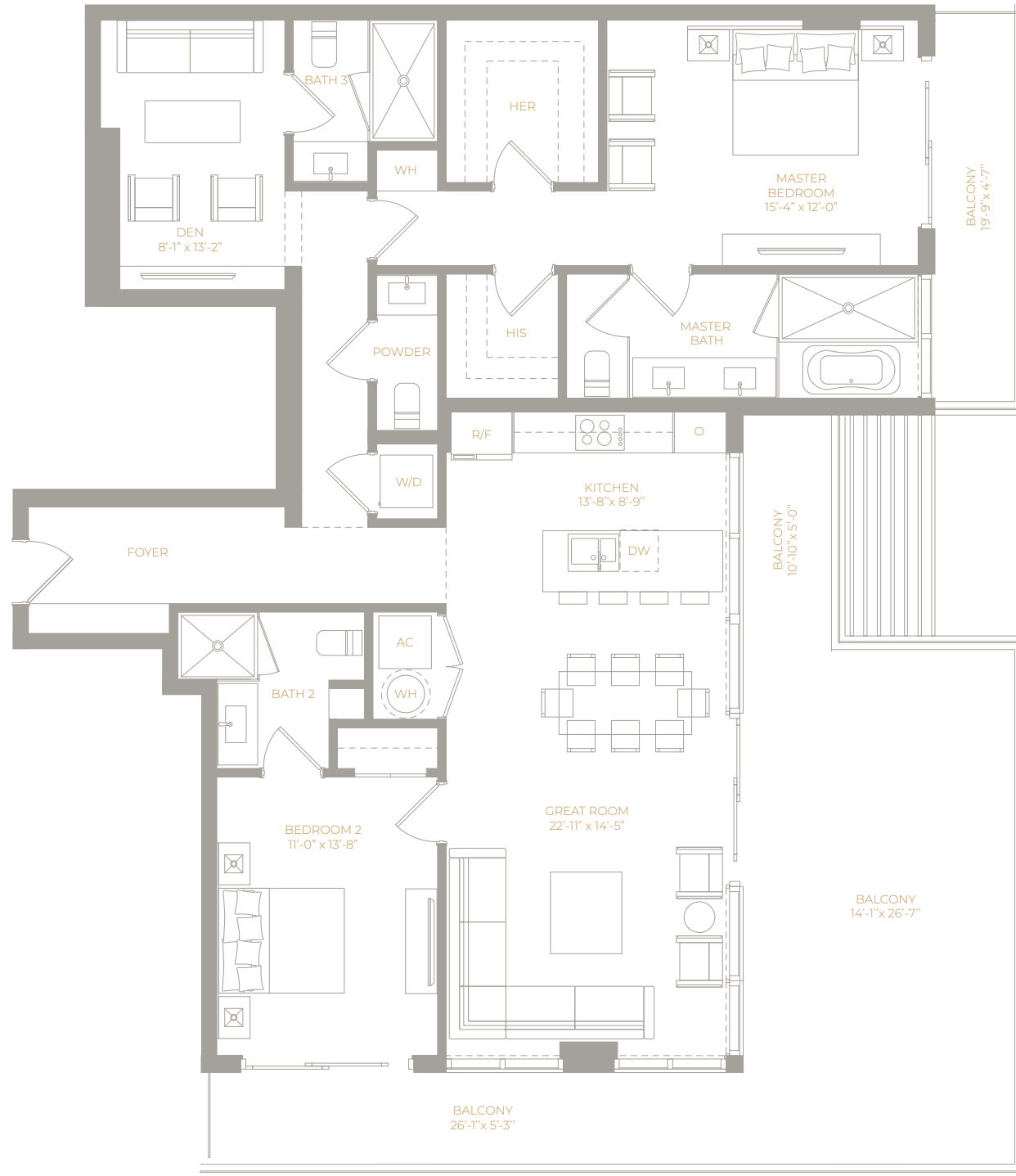
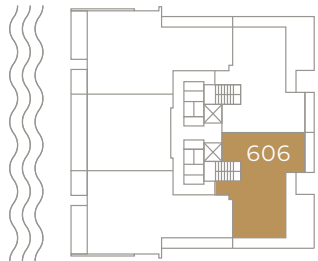
2 Bedrooms + Den / 3.5 Bath

AREA

Interior:
1,659 sq. ft. / 154 m²
Exterior:
652 sq. ft. / 60 m²
TOTAL:
2,311 sq. ft. / 214 m²



EAST FACADE



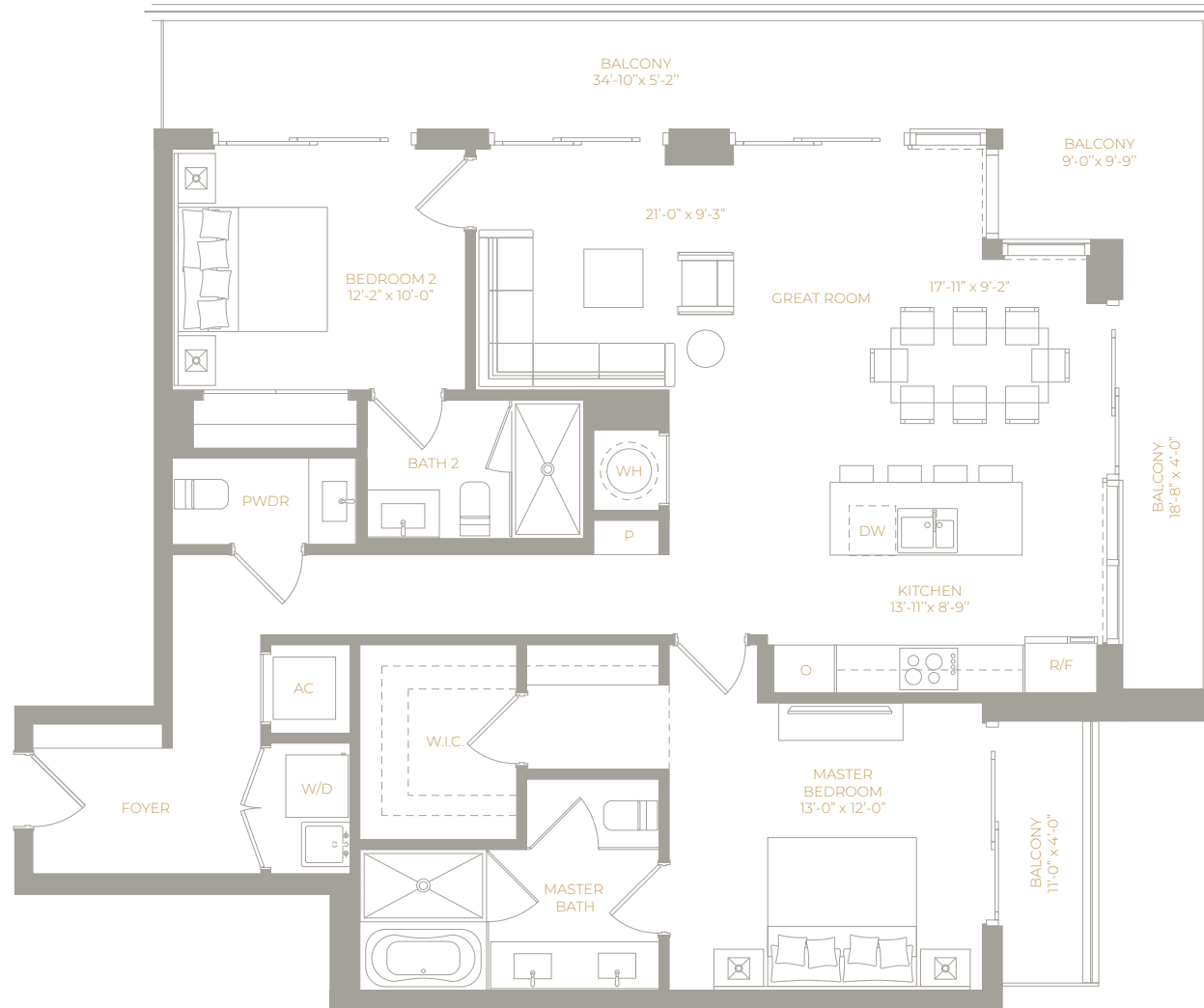
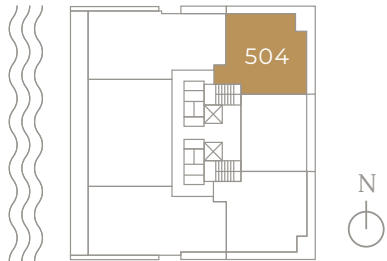
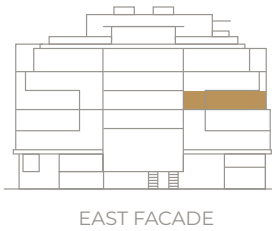
LEVEL 5

UNIT 504

2 Bedrooms / 2.5 Bath

AREA

Interior:
1,367 sq. ft. / 127 m²
Exterior:
386 sq. ft. / 35 m²
TOTAL:
1,753 sq. ft. / 162 m²



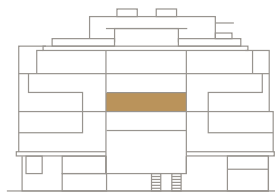
LEVEL 5

UNIT 505

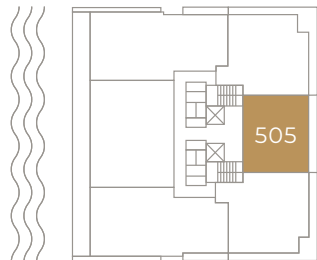
2 Bedrooms + Den / 3.5 Bath

AREA

Interior:
1,302 sq. ft. / 120 m²
Exterior:
135 sq. ft. / 12 m²
TOTAL:
1,437 sq. ft. / 133 m²



EAST FACADE



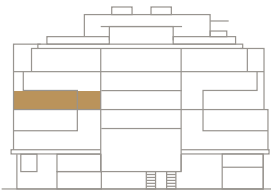
LEVEL 5

UNIT 506

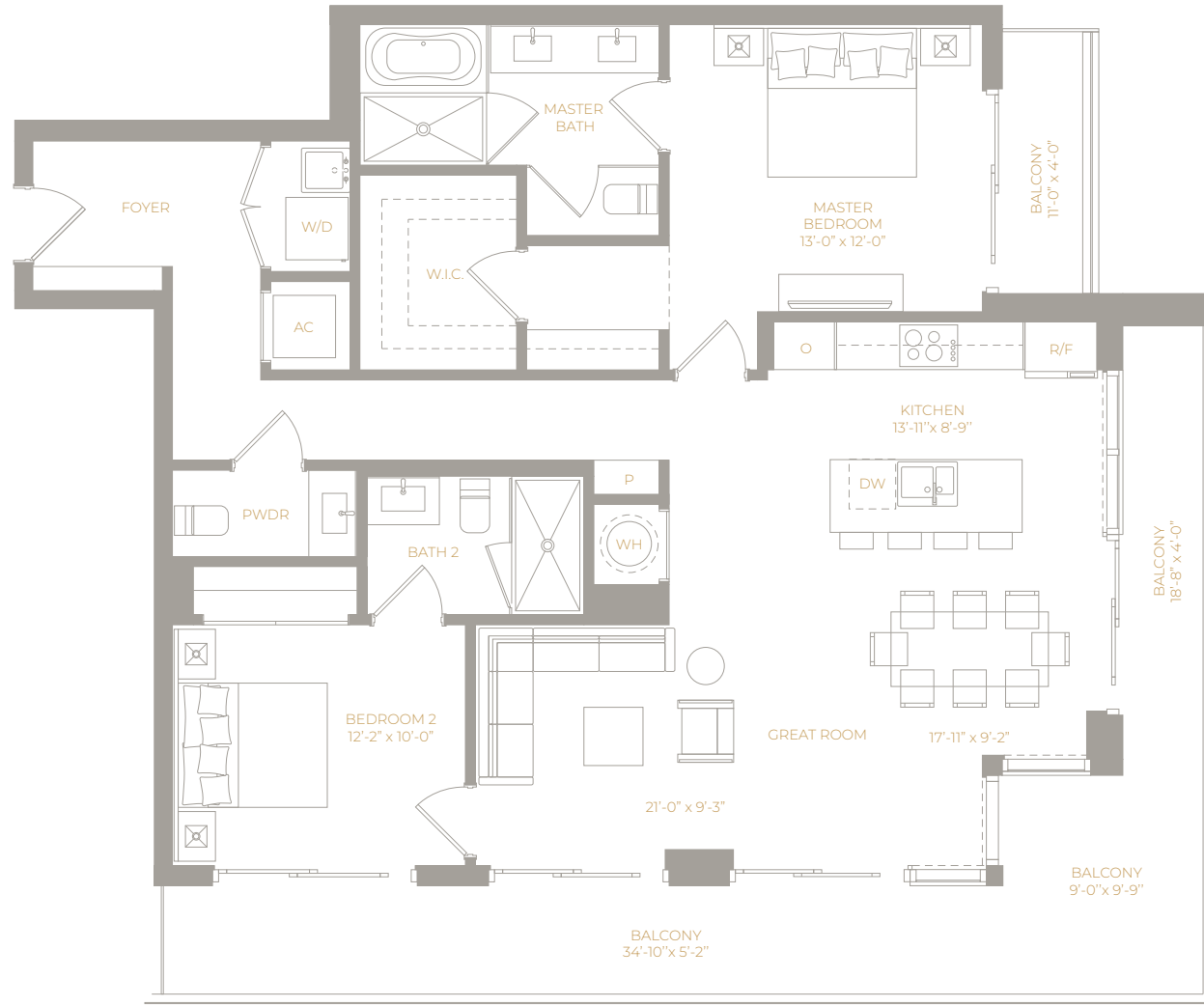
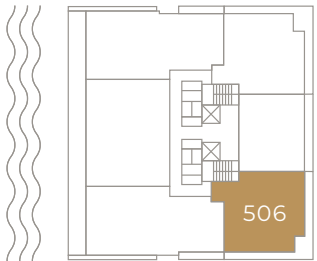
2 Bedrooms / 2.5 Bath

AREA

Interior:
1,367 sq. ft. / 127 m²
Exterior:
386 sq. ft. / 35 m²
TOTAL:
1,753 sq. ft. / 162 m²



EAST FACADE



LEVEL 4

UNIT 405

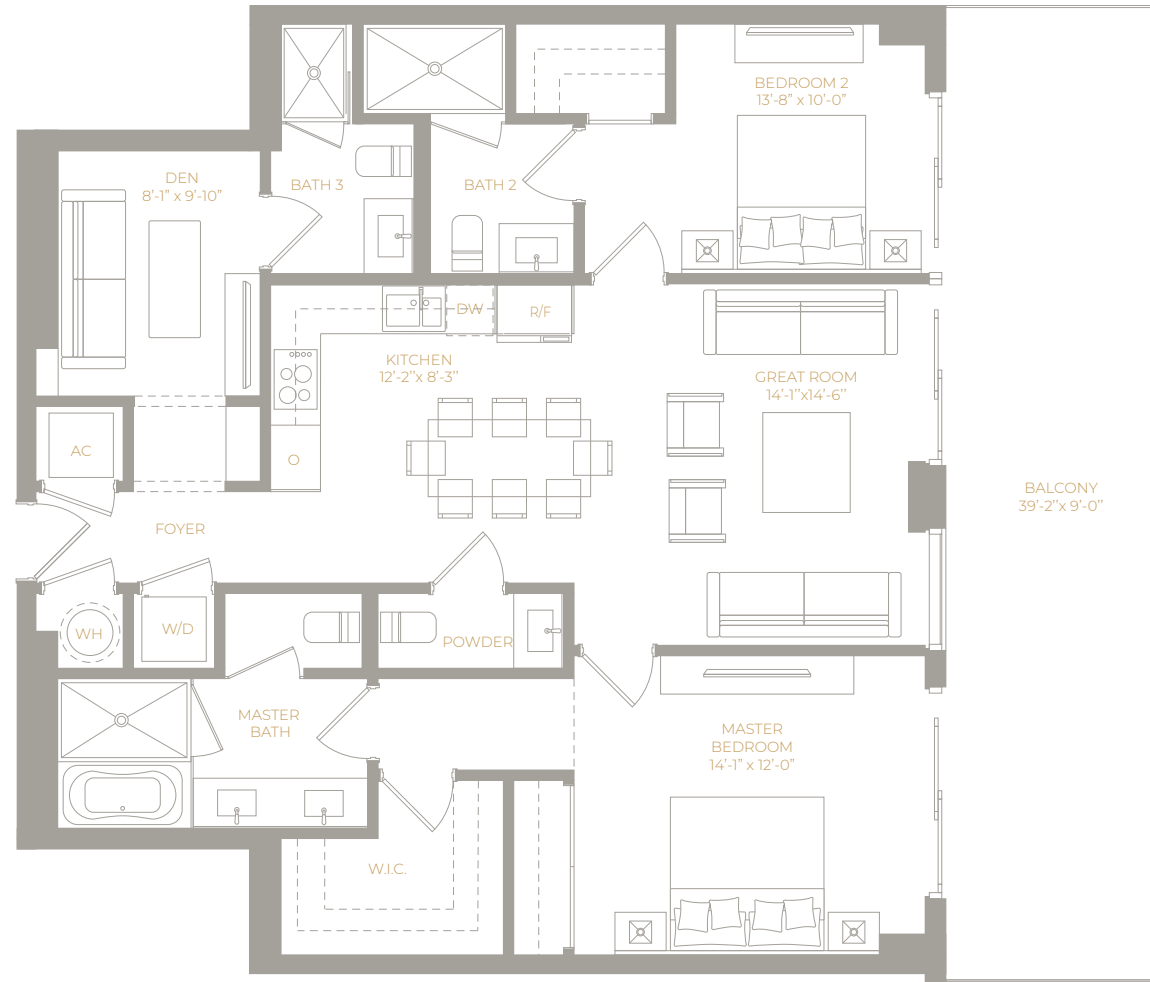
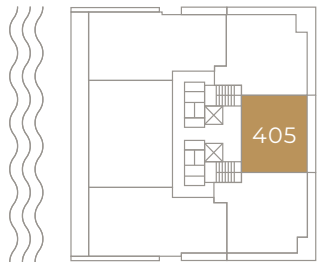
2 Bedrooms + Den / 3.5 Bath

AREA

Interior:
1,302 sq. ft. / 120 m²
Exterior:
364 sq. ft. / 33 m²
TOTAL:
1,666 sq. ft. / 154 m²



EAST FACADE



3 BEDROOM COLLECTION

LEVEL 5

UNIT 501

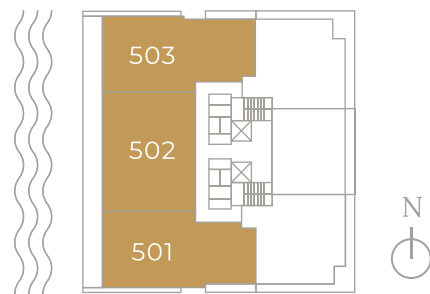
3 Bedrooms + Den / 4 Bath
2,466 sq. ft. / 229 m²

UNIT 502

3 Bedrooms + Den / 4.5 Bath
2,603 sq. ft. / 241 m²

UNIT 503

3 Bedrooms + Den / 4 Bath
2,466 sq. ft. / 229 m²



LEVEL 4

UNIT 402

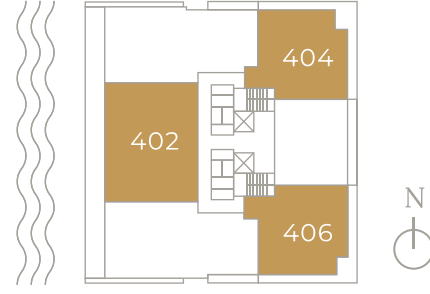
3 Bedrooms + Den / 4.5 Bath
2,609 sq. ft. / 242 m²

UNIT 404

3 Bedrooms / 3.5 Bath
1,856 sq. ft. / 172 m²

UNIT 406

3 Bedrooms / 3.5 Bath
1,856 sq. ft. / 172 m²



LEVEL 3

UNIT 302

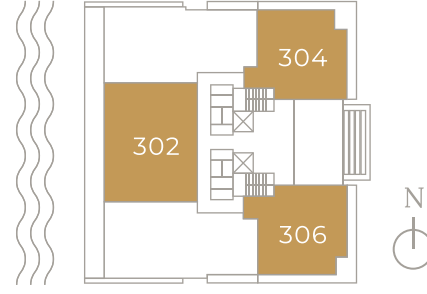
3 Bedrooms + Den / 4.5 Bath
2,603 sq. ft. / 241m²

UNIT 304

3 Bedrooms / 3.5 Bath
1,902 sq. ft. / 176 m²

UNIT 306

3 Bedrooms / 3.5 Bath
1,902 sq. ft. / 176 m²



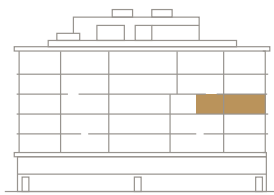
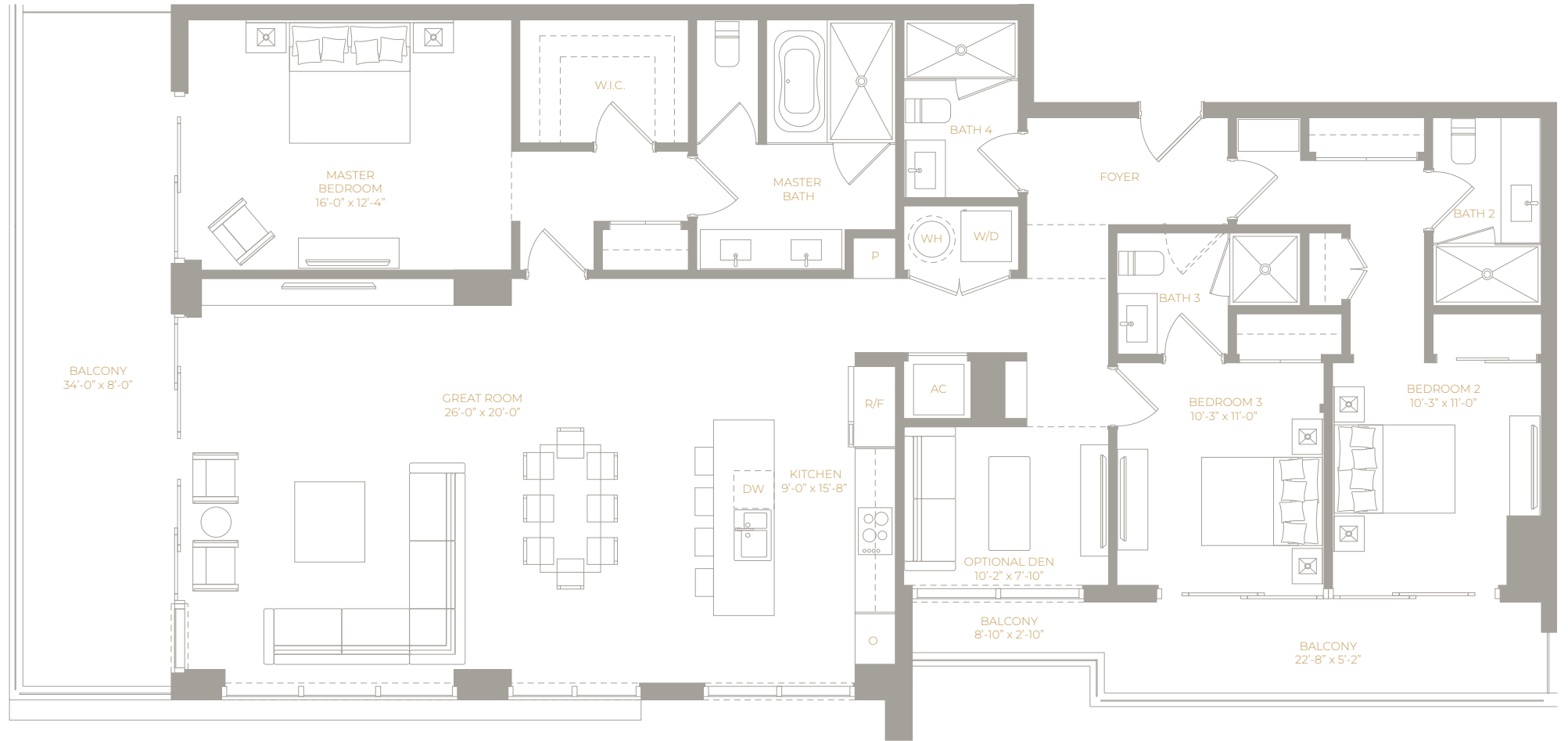
LEVEL 5

UNIT 501

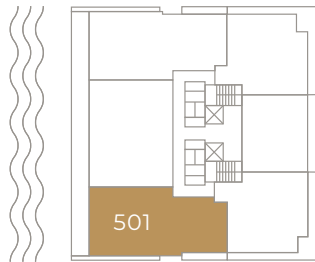
3 Bedrooms + Den / 4 Bath

AREA

Interior:
2,049 sq. ft. / 190 m²
Exterior:
416 sq. ft. / 38 m²
TOTAL:
2,466 sq. ft. / 229 m²



WEST FACADE



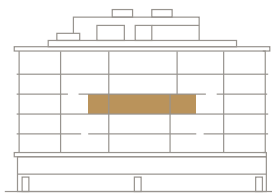
LEVEL 5

UNIT 502

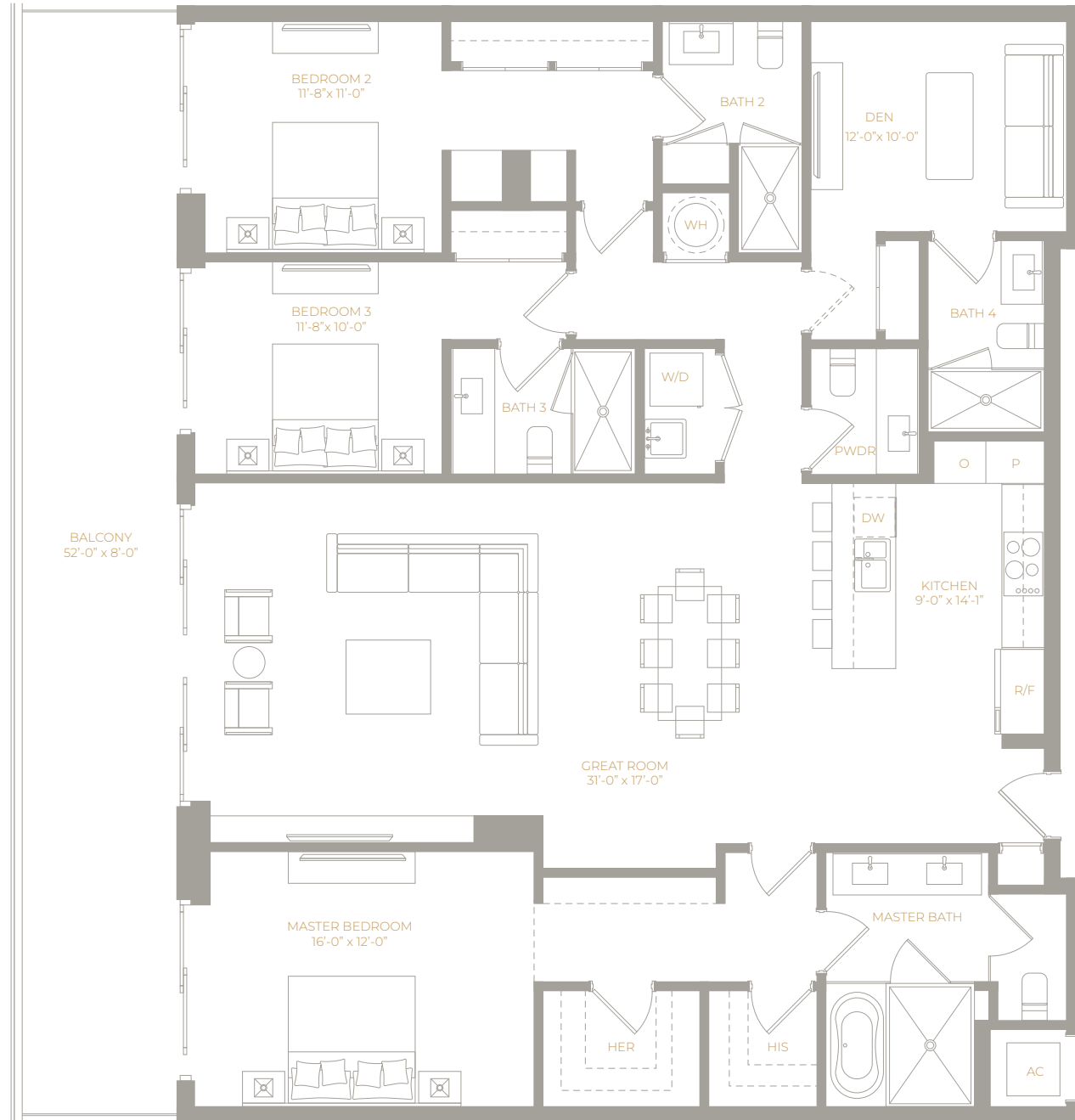
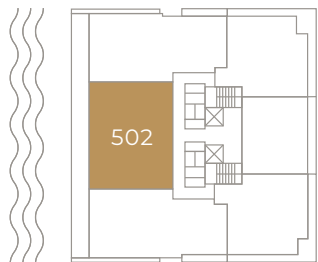
3 Bedrooms + Den / 4.5 Bath

AREA

Interior:
2,187 sq. ft. / 203 m²
Exterior:
416 sq. ft. / 38 m²
TOTAL:
2,603 sq. ft. / 241 m²



WEST FACADE



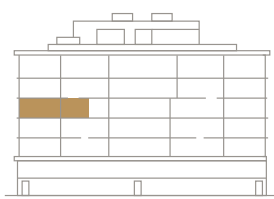
LEVEL 5

UNIT 503

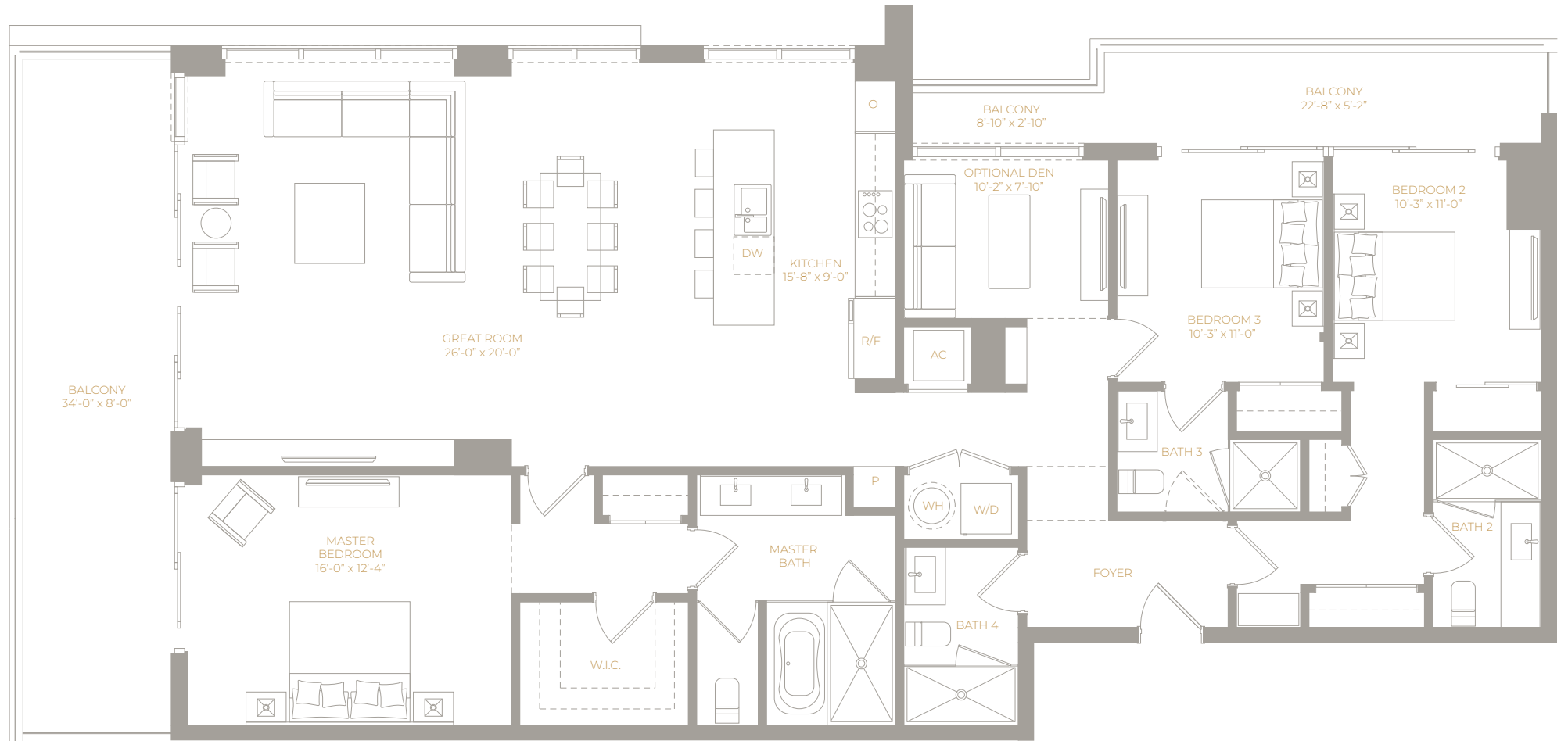
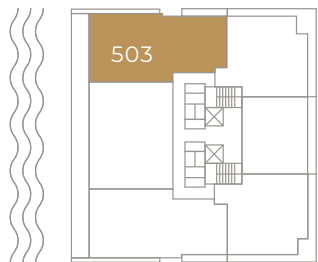
3 Bedrooms + Den / 4 Bath

AREA

Interior:
2,049 sq. ft. / 190 m²
Exterior:
416 sq. ft. / 38 m²
TOTAL:
2,466 sq. ft. / 229 m²



WEST FACADE



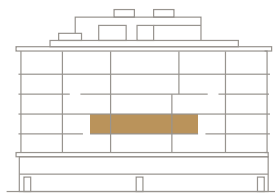
LEVEL 4

UNIT 402

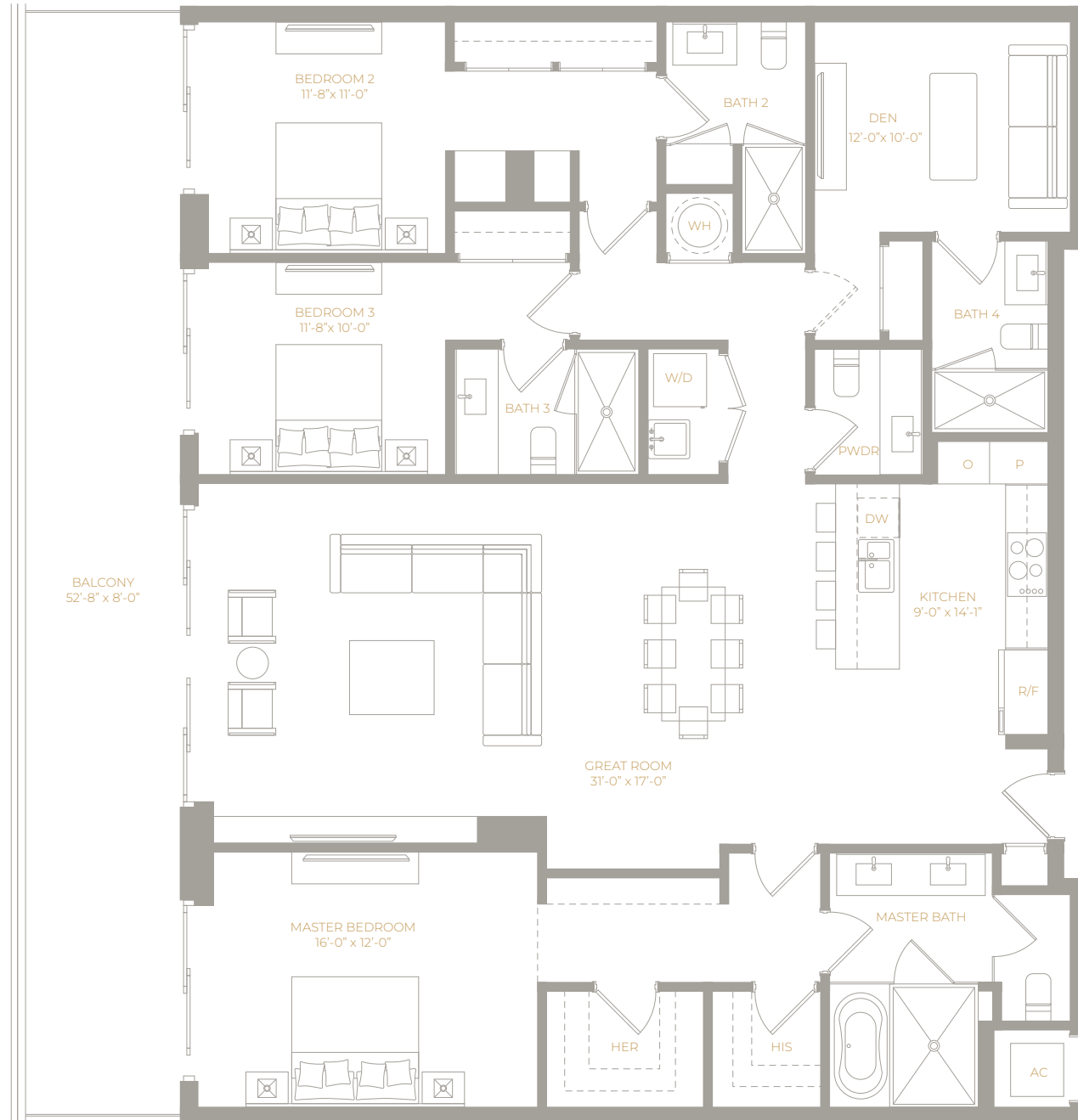
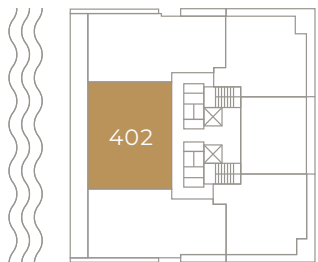
3 Bedrooms + Den / 4.5 Bath

AREA

Interior:
2,187 sq. ft. / 203 m²
Exterior:
421 sq. ft. / 39 m²
TOTAL:
2,609 sq. ft. / 242 m²



WEST FACADE



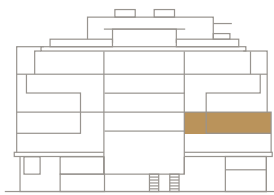
LEVEL 4

UNIT 404

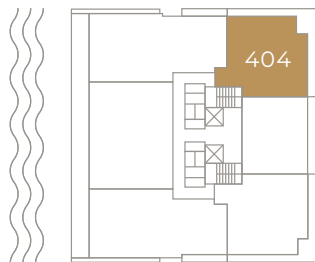
3 Bedrooms / 3.5 Bath

AREA

Interior:
1,491 sq. ft. / 138 m²
Exterior:
364 sq. ft. / 33 m²
TOTAL:
1,856 sq. ft. / 172 m²



EAST FACADE



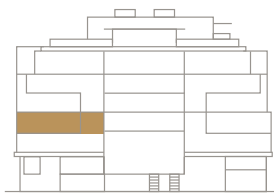
LEVEL 4

UNIT 406

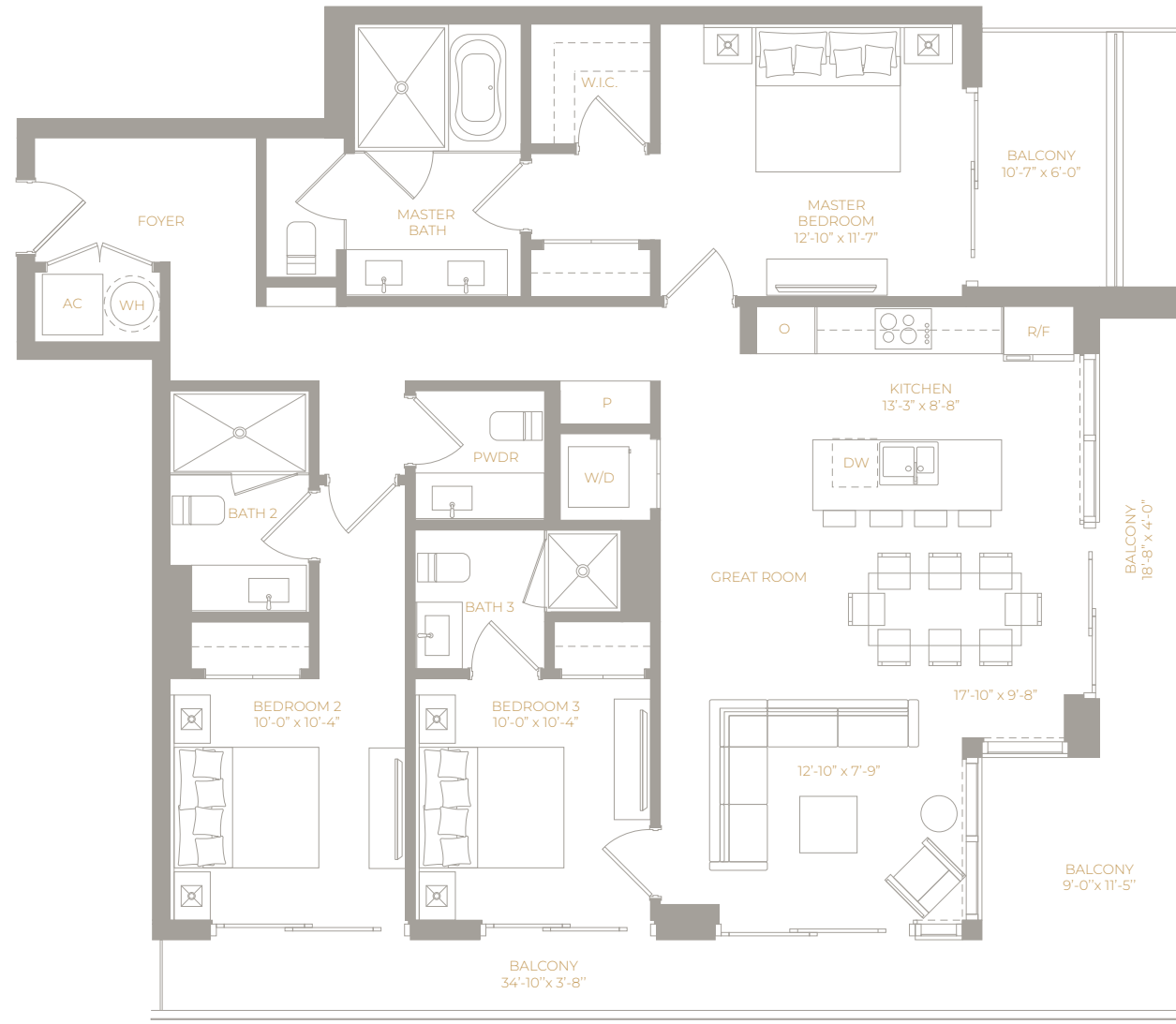
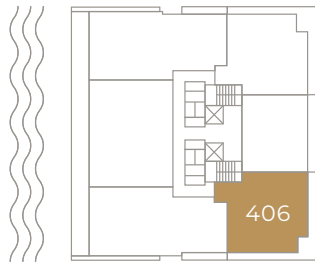
3 Bedrooms / 3.5 Bath

AREA

Interior:
1,491 sq. ft. / 138 m²
Exterior:
364 sq. ft. / 33 m²
TOTAL:
1,856 sq. ft. / 172 m²



EAST FACADE



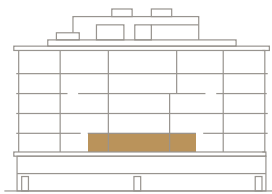
LEVEL 3

UNIT 302

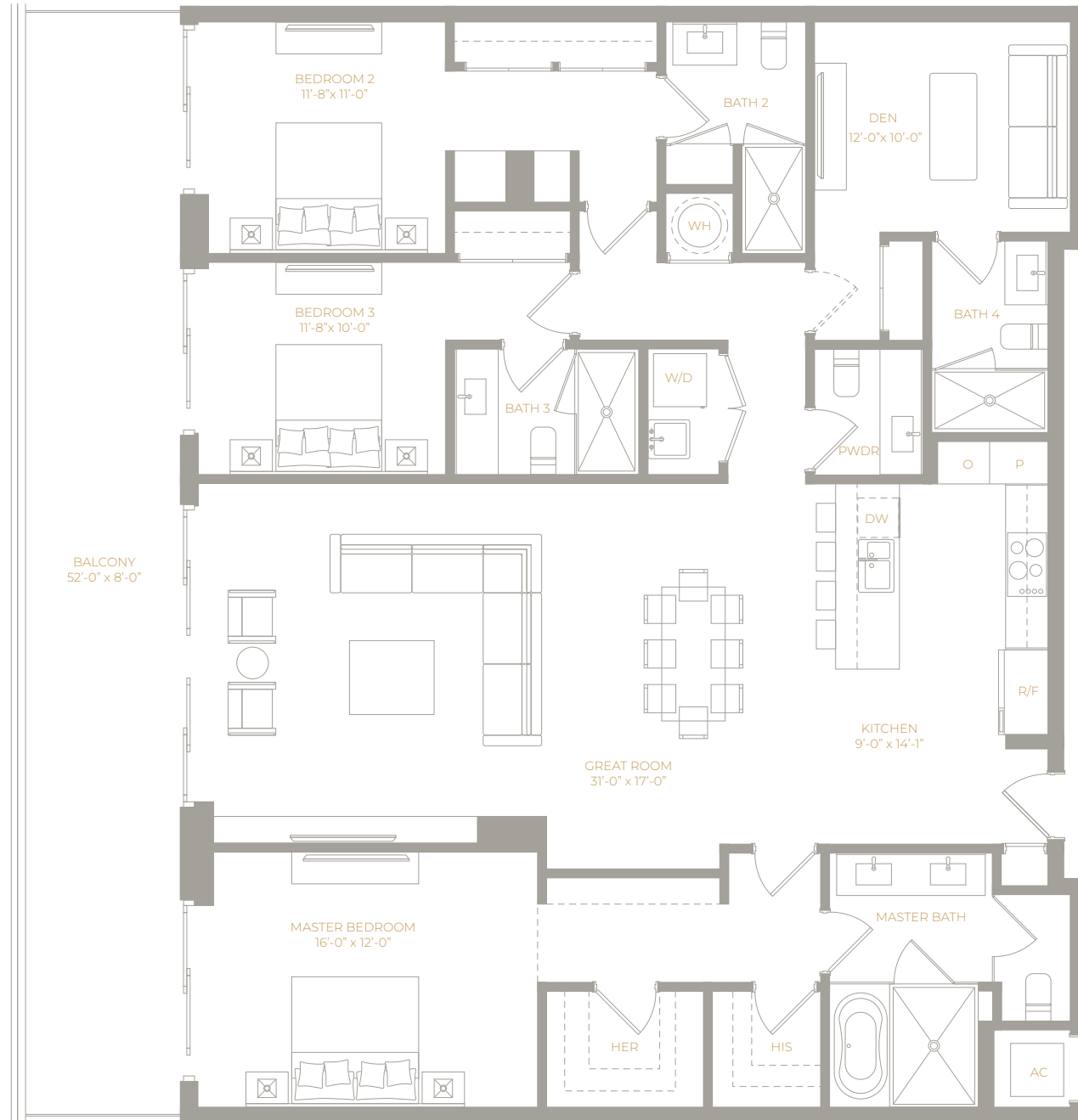
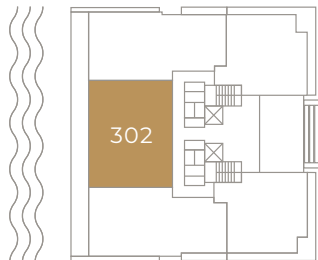
3 Bedrooms + Den / 4.5 Bath

AREA

Interior:
2,187 sq. ft. / 203 m²
Exterior:
416 sq. ft. / 38 m²
TOTAL:
2,603 sq. ft. / 241 m²



WEST FACADE



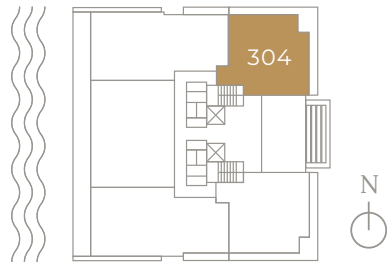
LEVEL 3

UNIT 304

3 Bedrooms / 3.5 Bath

AREA

Interior:
1,549 sq. ft. / 143 m²
Exterior:
352 sq. ft. / 32 m²
TOTAL:
1,902 sq. ft. / 176 m²



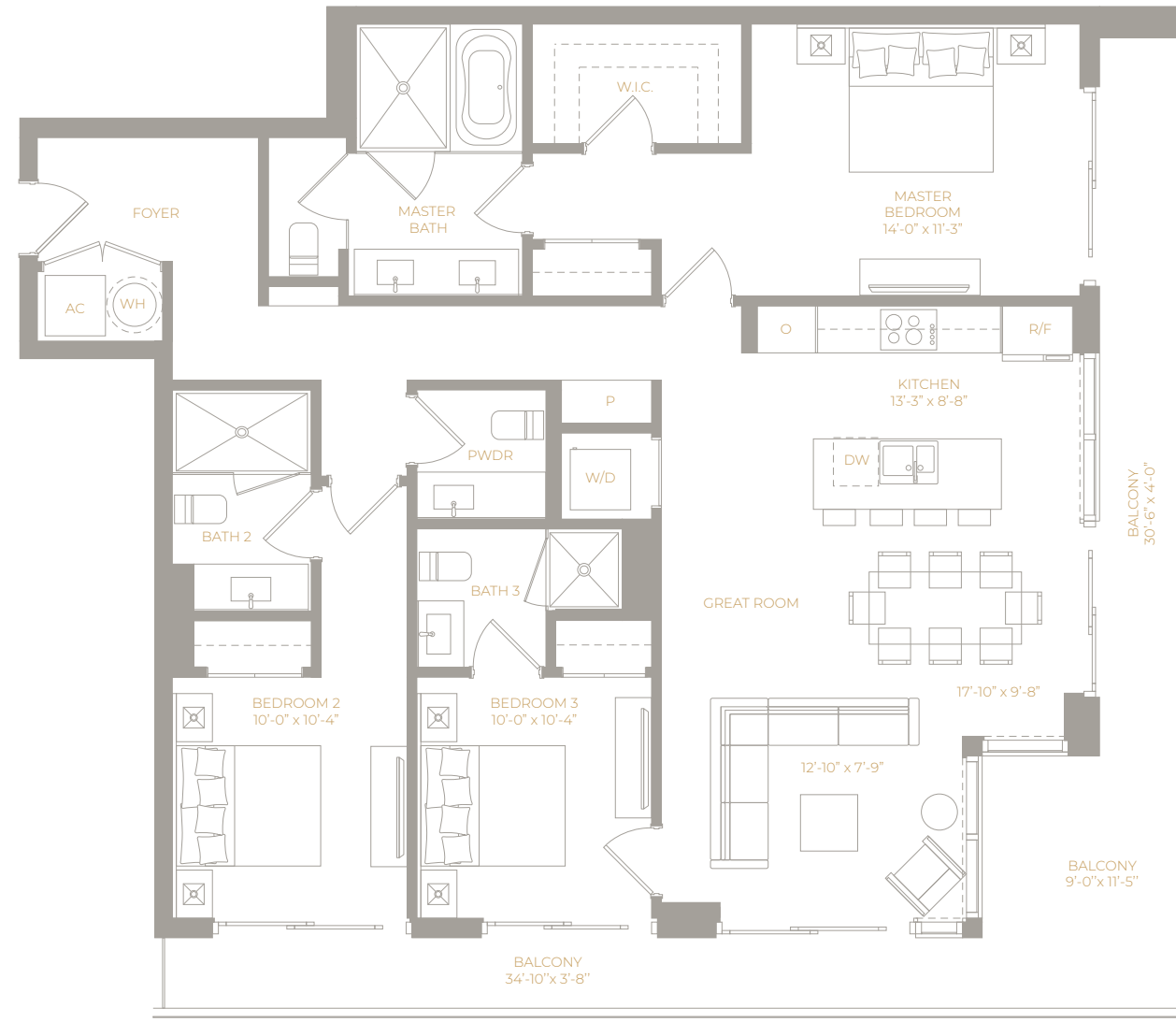
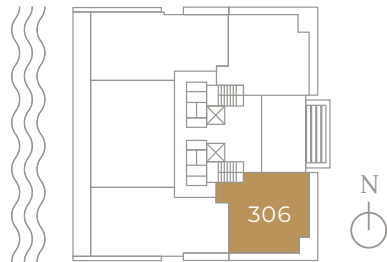
LEVEL 3

UNIT 306

3 Bedrooms / 3.5 Bath

AREA

Interior:
1,549 sq. ft. / 143 m²
Exterior:
352 sq. ft. / 32 m²
TOTAL:
1,902 sq. ft. / 176 m²



4 BEDROOM COLLECTION

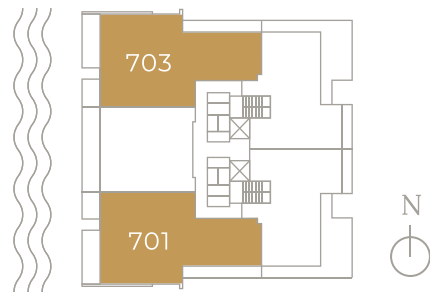
PH LEVEL 7

UNIT 701

4 Bedrooms / 4.5 Bath
2,728 sq. ft. / 253 m²

UNIT 703

4 Bedrooms / 4.5 Bath
2,728 sq. ft. / 253 m²



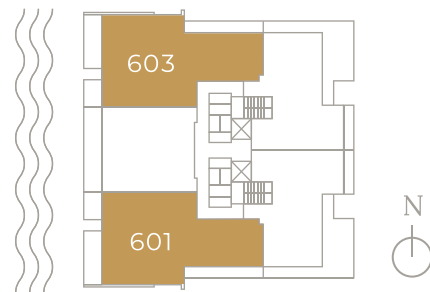
LEVEL 6

UNIT 601

4 Bedrooms + Den / 4.5 Bath
2,799 sq. ft. / 260 m²

UNIT 603

4 Bedrooms + Den / 4.5 Bath
2,799 sq. ft. / 260 m²



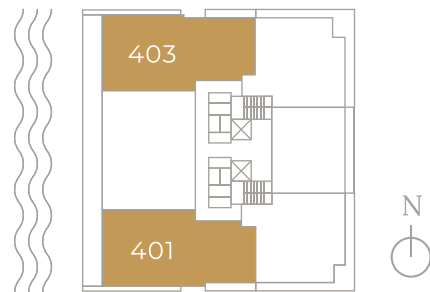
LEVEL 4

UNIT 401

4 Bedrooms / 4 Bath
2,461 sq. ft. / 228 m²

UNIT 403

4 Bedrooms / 4 Bath
2,461 sq. ft. / 228 m²



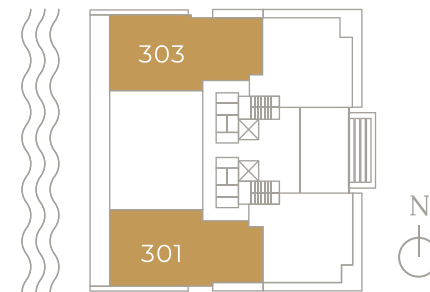
LEVEL 3

UNIT 301

4 Bedrooms / 4 Bath
2,490 sq. ft. / 231 m²

UNIT 303

4 Bedrooms / 4 Bath
2,490 sq. ft. / 231 m²



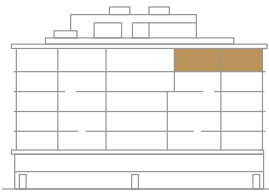
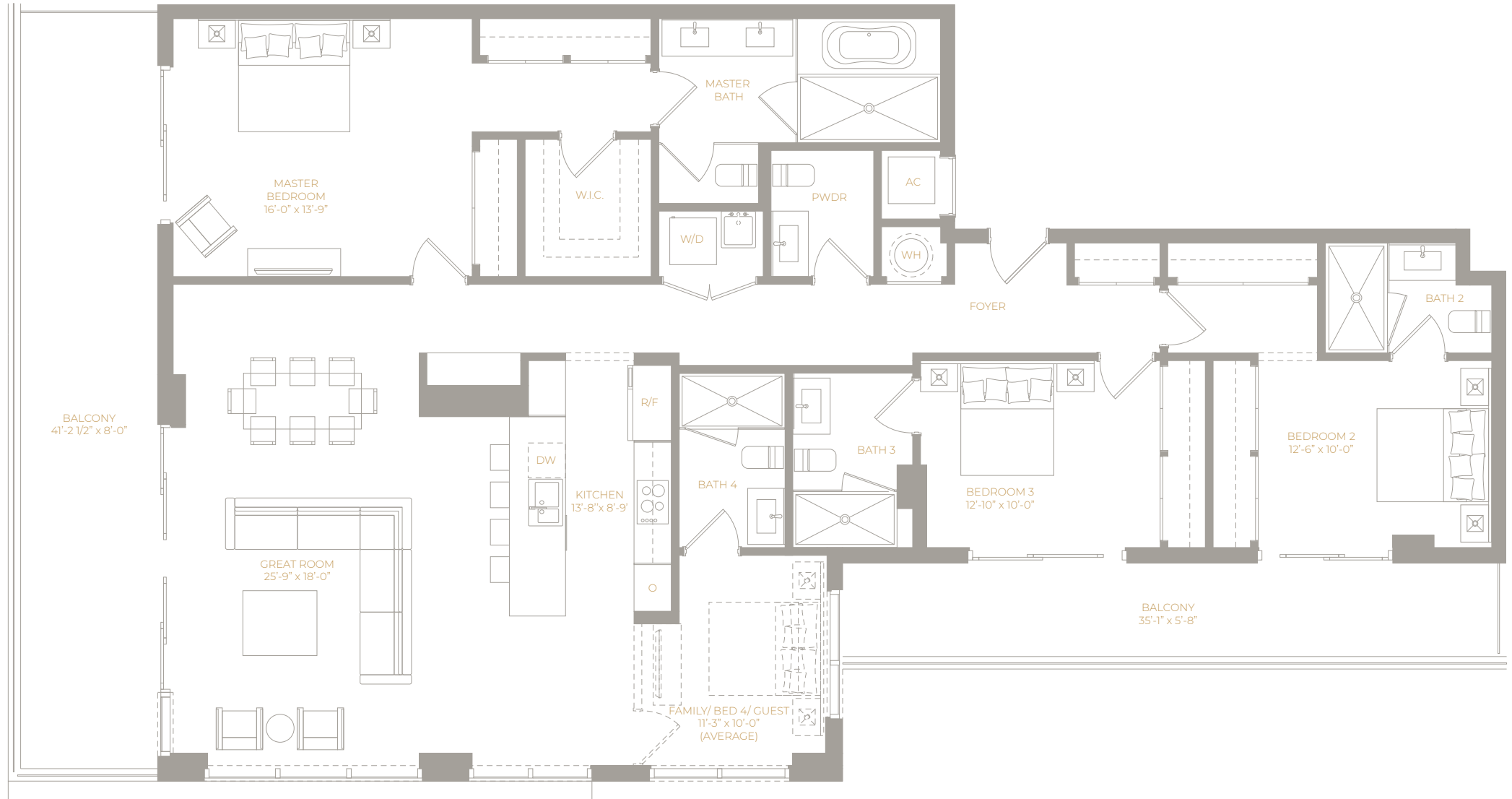
PH LEVEL 7

UNIT 701

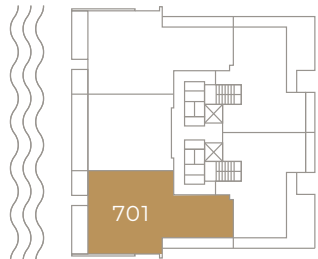
4 Bedrooms
/ 4.5 Bath

AREA

Interior:
2,200 sq. ft. / 204 m²
Exterior:
528 sq. ft. / 49 m²
TOTAL:
2,728 sq. ft. / 253 m²



WEST FACADE



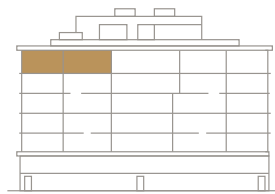
PH LEVEL 7

UNIT 703

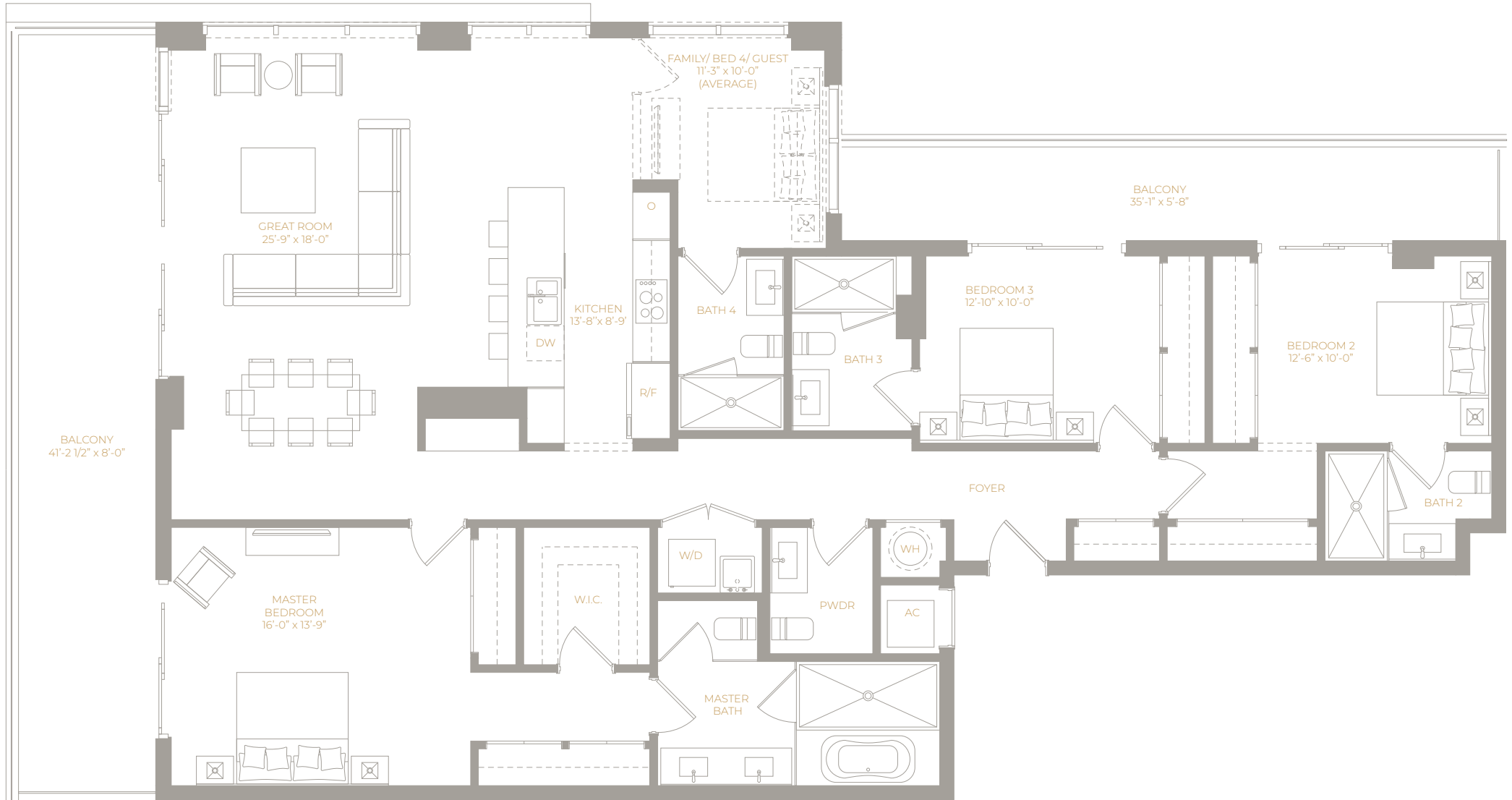
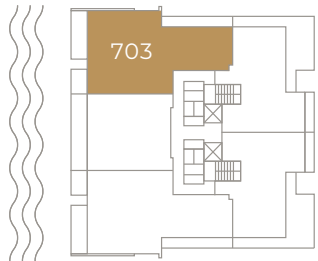
4 Bedrooms
/ 4.5 Bath

AREA

Interior:
2,200 sq. ft. / 204 m²
Exterior:
528 sq. ft. / 49 m²
TOTAL:
2,728 sq. ft. / 253 m²



WEST FACADE



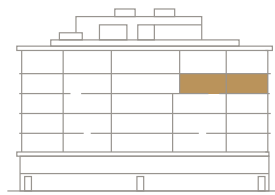
LEVEL 6

UNIT 601

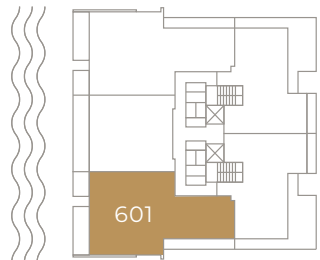
4 Bedrooms + Den
/ 4.5 Bath

AREA

Interior:
2,328 sq. ft. / 216 m²
Exterior:
471 sq. ft. / 43 m²
TOTAL:
2,799 sq. ft. / 260 m²



WEST FACADE



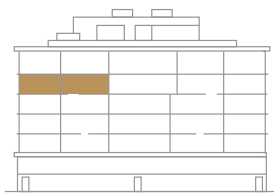
LEVEL 6

UNIT 603

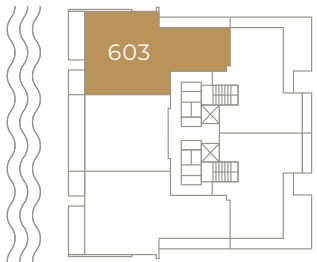
4 Bedrooms + Den
/ 4.5 Bath

AREA

Interior:
2,328 sq. ft. / 216 m²
Exterior:
471 sq. ft. / 43 m²
TOTAL:
2,799 sq. ft. / 260 m²



WEST FACADE

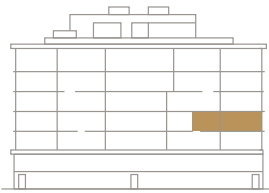
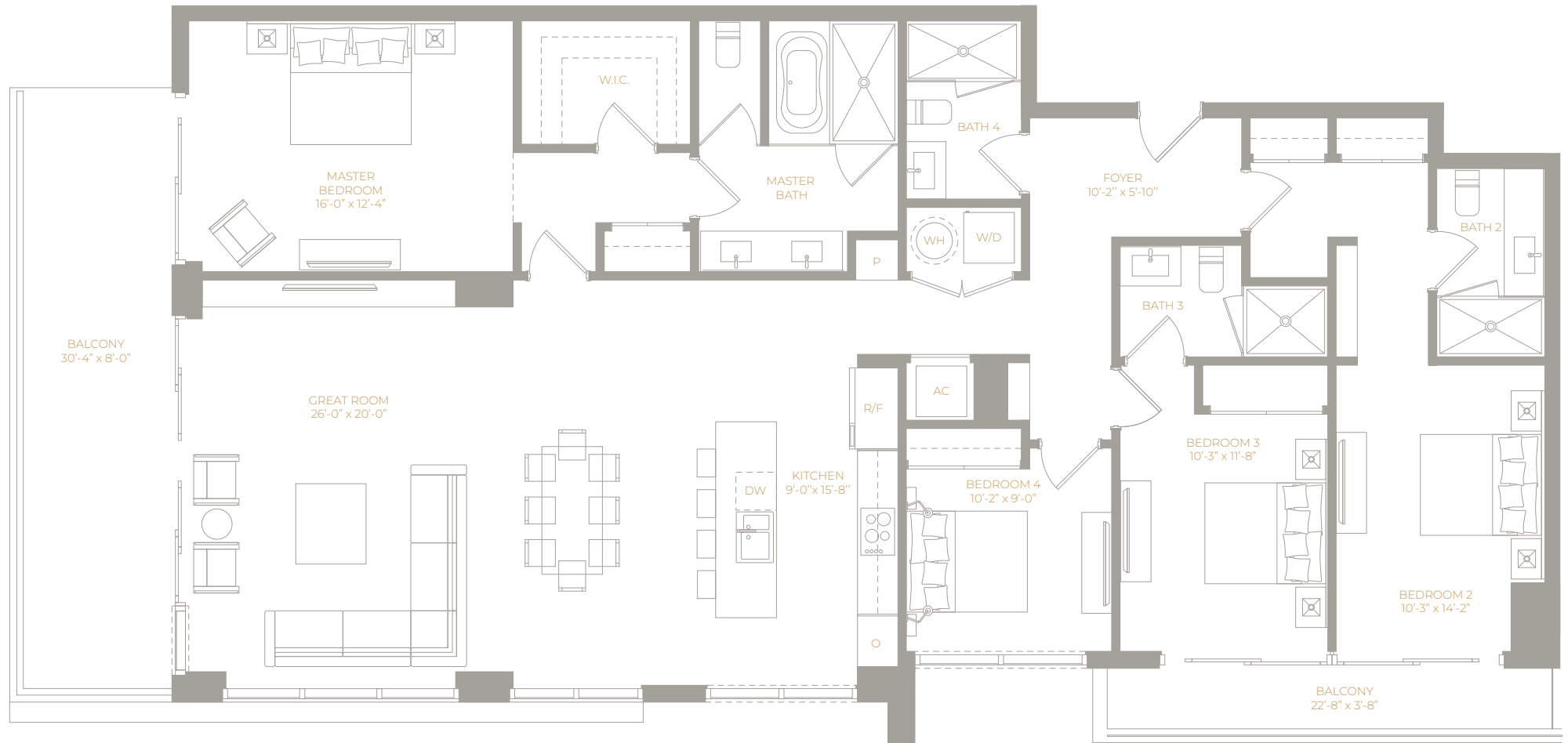


LEVEL 4 UNIT 401

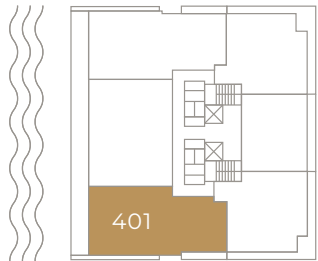
4 Bedrooms / 4 Bath

AREA

Interior:
2,135 sq. ft. / 198 m²
Exterior:
326 sq. ft. / 30 m²
TOTAL:
2,461 sq. ft. / 228 m²



WEST FACADE



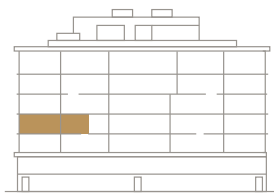
LEVEL 4

UNIT 403

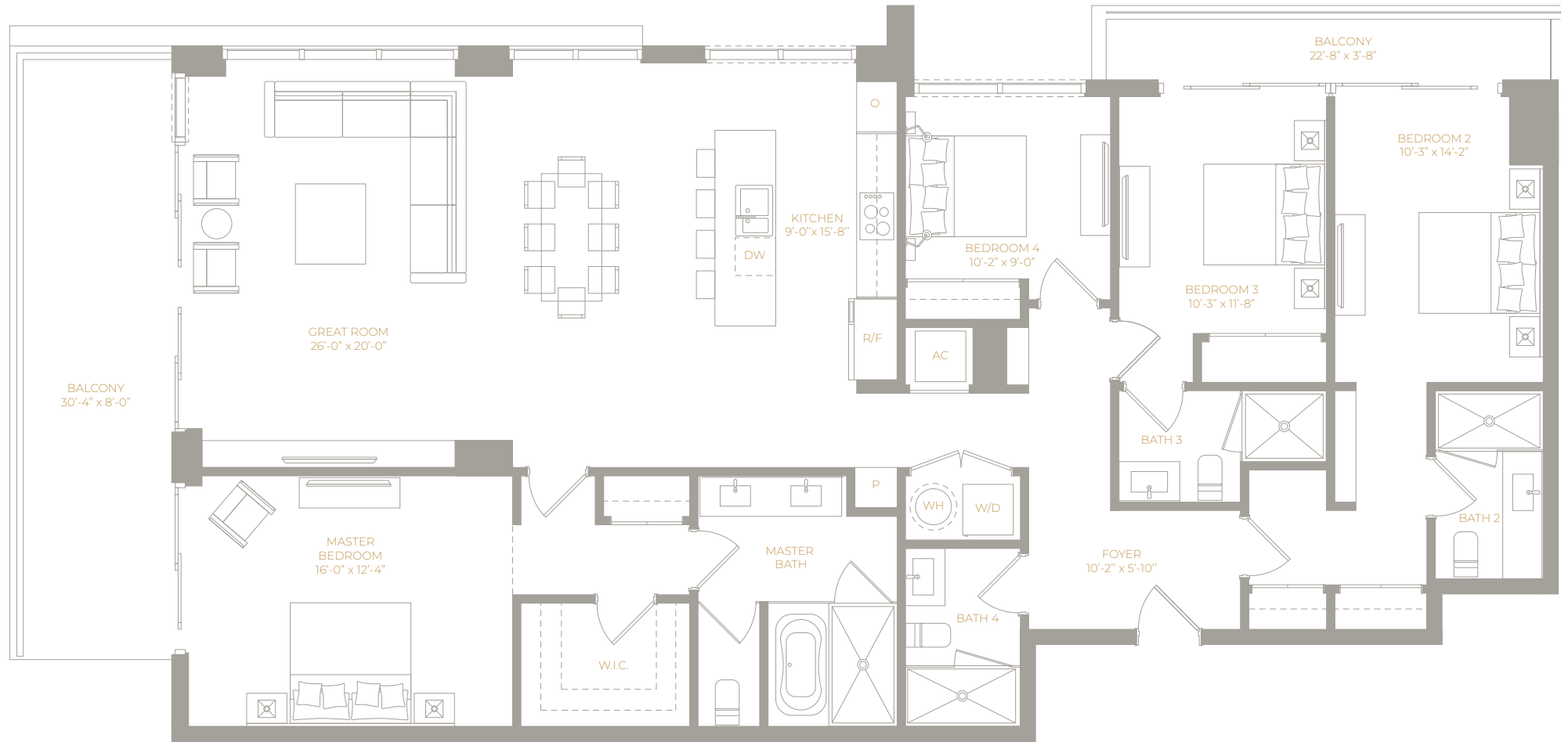
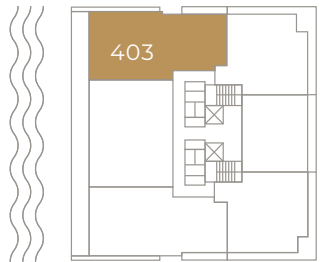
4 Bedrooms / 4 Bath

AREA

Interior:
2,135 sq. ft. / 198 m²
Exterior:
326 sq. ft. / 30 m²
TOTAL:
2,461 sq. ft. / 228 m²



WEST FACADE



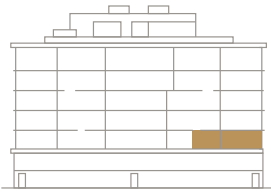
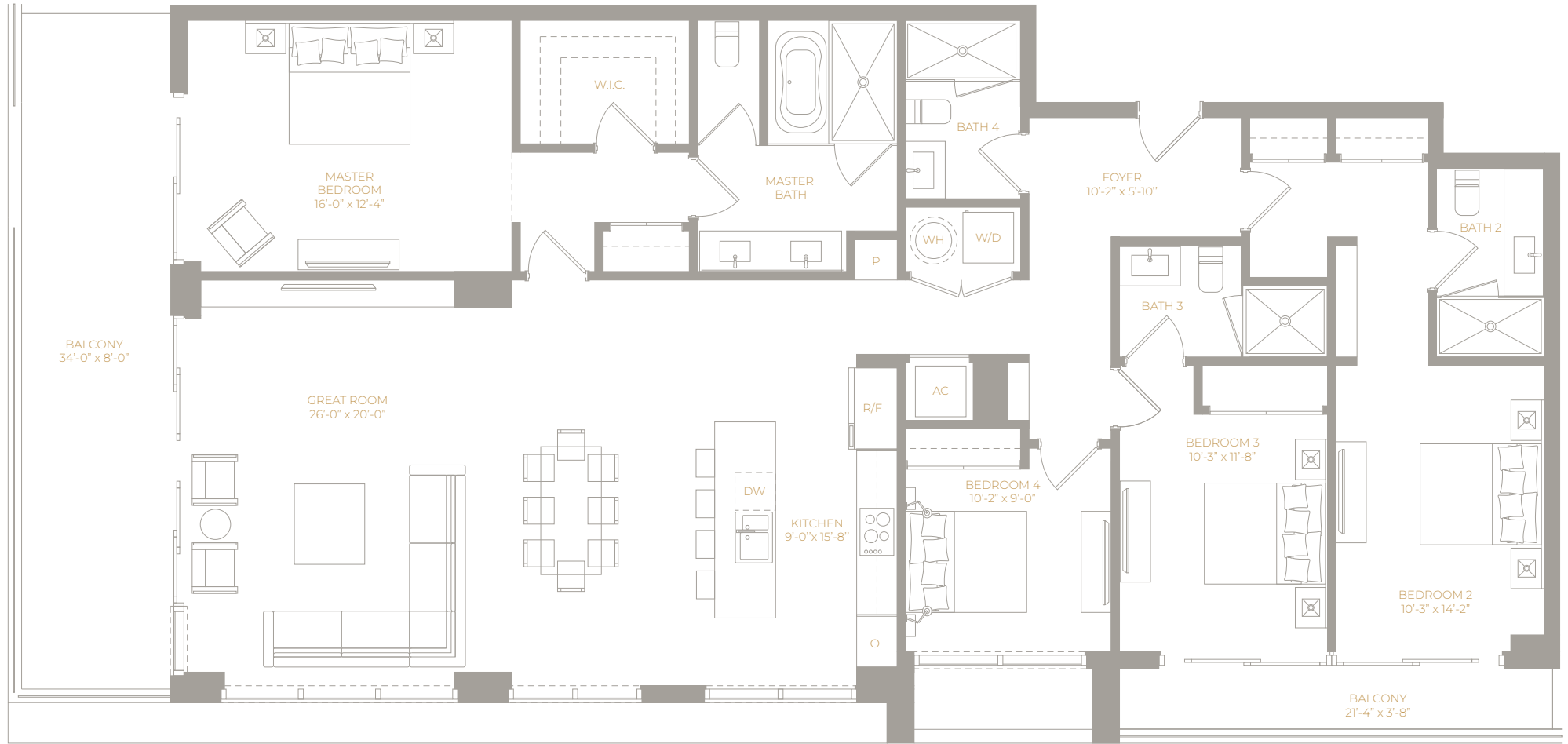
LEVEL 3

UNIT 301

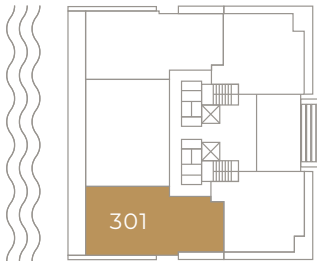
4 Bedrooms / 4 Bath

AREA

Interior:
2,135 sq. ft. / 198 m²
Exterior:
355 sq. ft. / 33 m²
TOTAL:
2,490 sq. ft. / 231 m²



WEST FACADE



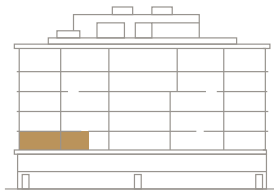
LEVEL 3

UNIT 303

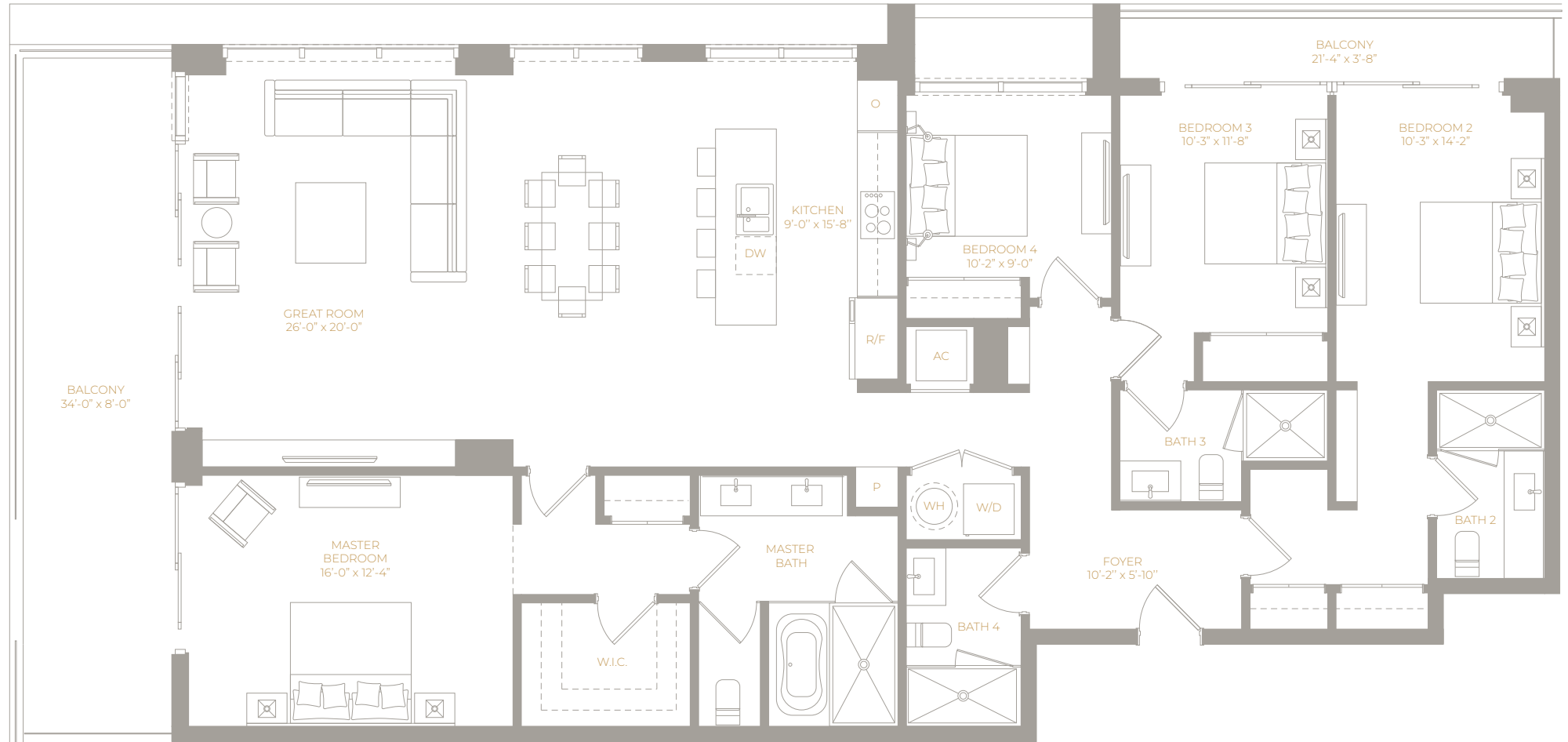
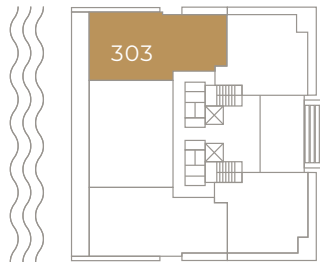
4 Bedrooms / 4 Bath

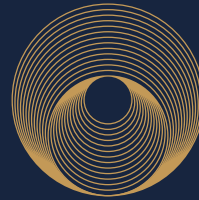
AREA

Interior:
2,135 sq. ft. / 198 m²
Exterior:
355 sq. ft. / 33 m²
TOTAL:
2,490 sq. ft. / 231 m²



WEST FACADE





ORIGIN
RESIDENCES • BAY HARBOR

by artefacto

SITE ADDRESS 9760 West Bay Harbor Drive, Bay Harbor Islands, FL 33154