

The background of the entire image is a dark teal color, overlaid with several large, detailed illustrations of tropical-looking leaves in various shades of teal and green. The leaves are scattered around the central text, with some overlapping it.

Sun House

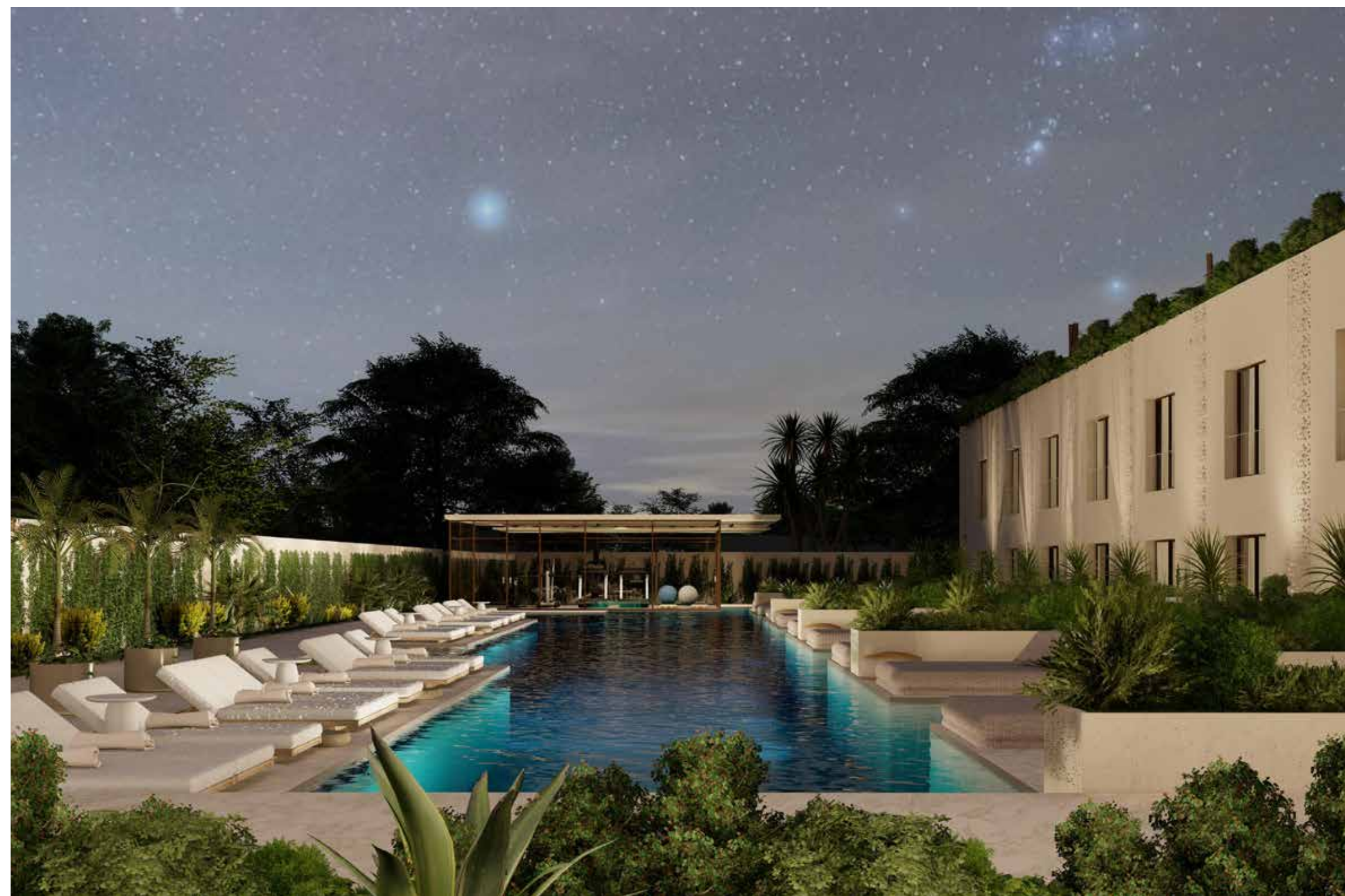
COMPORTA COUNTRY

Sustainable Residential Retreat

Arish Capital Partners











FREEDOM
INVEST ABROAD
LIFESTYLE SHOPPING
PRIME REAL ESTATE
DEMOCRACY
TOLERANT
FUN
DREAM
DIVERSIFY
HISTORY
HEALTHCARE
SUN HOUSE
TRAVEL OPEN
HUMAN RIGHTS
SUN
MOBILITY
WELCOMING
SAFETY
LIVE WELCOMING
FRIENDS
ART
EQUALITY
BEACH
EDUCATION
ARISH CAPITAL PARTNERS